

REPAIR PARTS LIST

KANSAS CITY SOUTHERN RAILWAY Co.

MODEL 4-150

TYPE J HYD. SPREADER DITCHER 4 BRACE

MFRS. SER # 1408

RR # KCS-097



IMPORTANT

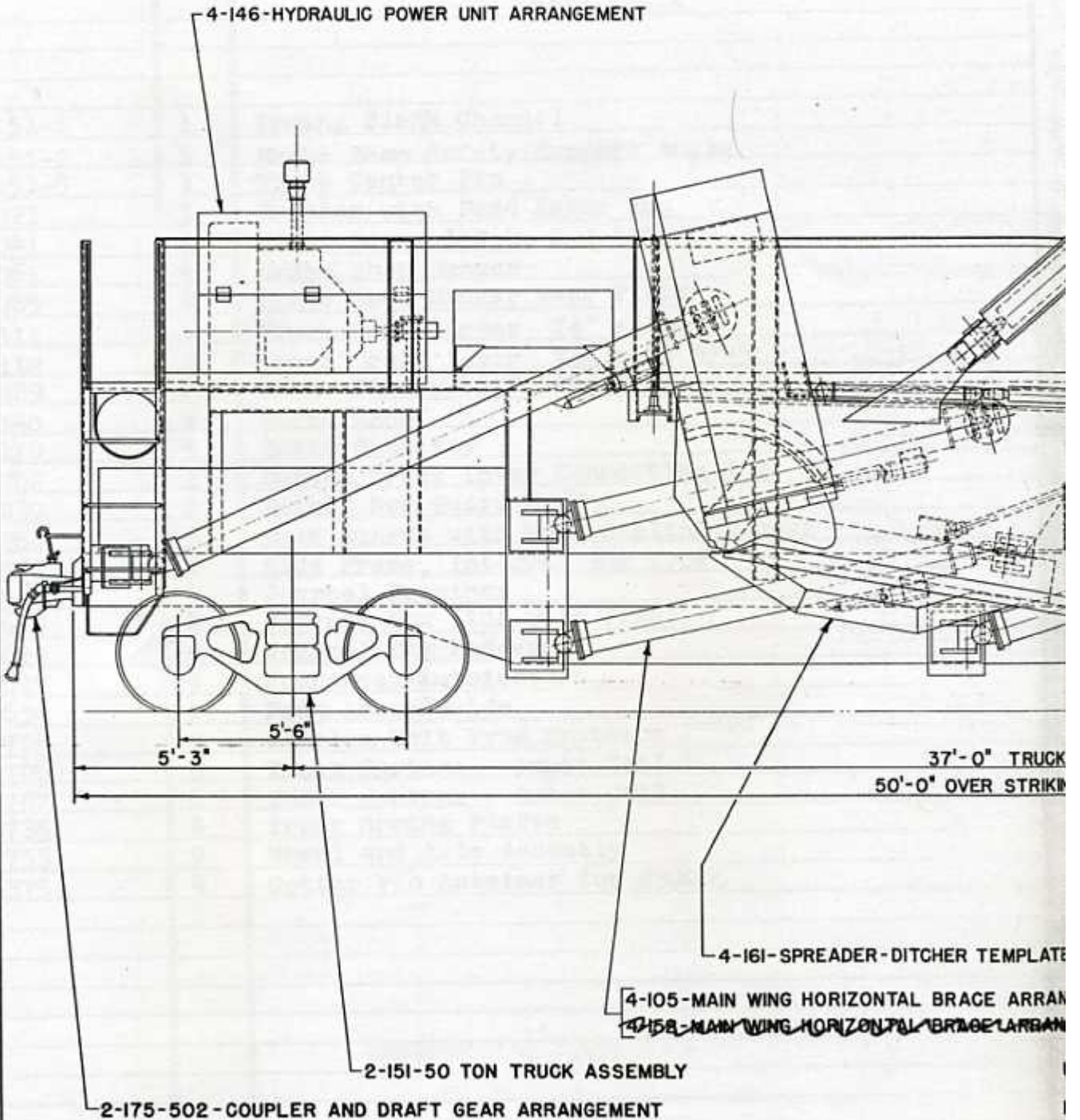
When ordering repair parts, be sure to specify, plainly, the catalog number, quantity required, if right or left hand, and give serial number of car which appears on company name plate.

O. F. JORDAN COMPANY

EAST CHICAGO, INDIANA

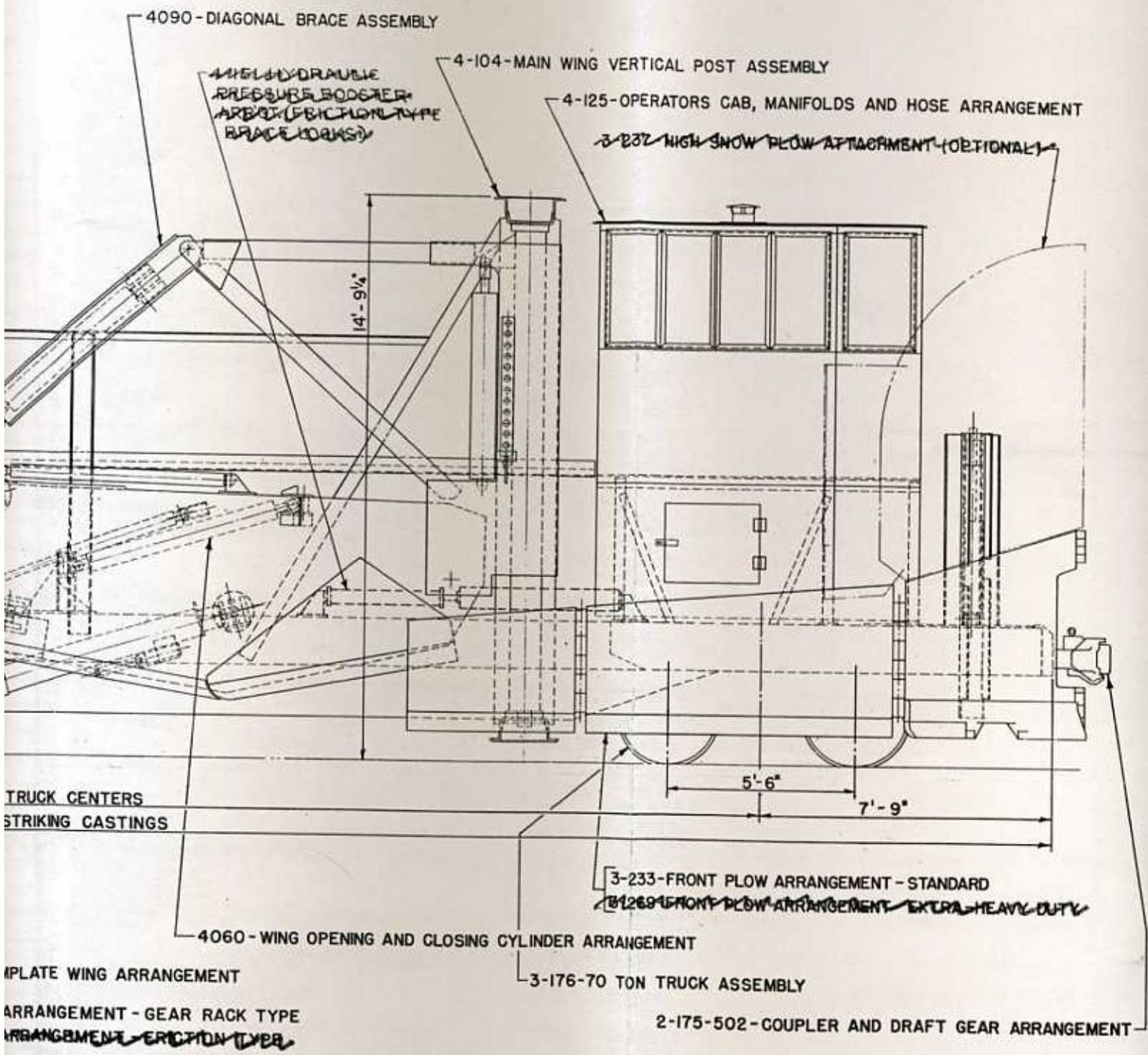
REPAIR PARTS LIST

U.S. DEPARTMENT OF COMMERCE
BUREAU OF MARITIME SERVICE - WASH. D.C.



NOTES-

WHEN ORDERING PARTS ALWAYS SPECIFY MANUFACTURERS CAR SERIAL NUMBER. ALSO IF R.H. OR L.H. NAMES AND PART NUMBERS SHOWN ARE FOR SUB-ASSEMBLIES AND REFERENCE SHOULD BE MADE INDIVIDUAL DRAWINGS OR PAGES FOR PIECE PARTS.



UNDERFRAME ASSEMBLY - SEE PAGE NO. 2-175-502

BRAKE ARRANGEMENT - SEE PAGE NO. 3-183

R L.H. IS REQUIRED.
MADE TO THEIR

O. F. JORDAN CO., INC.
EAST CHICAGO, INDIANA

HYDRAULIC
SPREADER-DITCHER

REPAIR PART INDEX MODEL No. ~~A#100~~

4-150

REPAIR PARTS LIST

O. F. JORDAN CO.
EAST CHICAGO, INDIANA — U. S. A.

PAGE NO. 2-151-501

Date March 12, 1965

Model Type "A", Hydraulic
and Roadmaster

PART NO.	NO. PER CAR	DESCRIPTION
		50 TON STANDARD TRUCK ASSEMBLY
		5'-6" WHEEL BASE 5½ x 10 JOURNALS
		REAR TRUCK
2-151-1	1	Spring Plank Channel
2-151-2	1	Brake Beam Safety Support Angle
2-151-5	1	Truck Center Pin
30021	1	Bolster with Dead Lever Lug
30041	2	Brake Beam, 1 R.H. & 1 L.H.
30061	4	Brake Shoe Hanger
30085	4	Brake Shoe Hanger Wear Plate
30111	1	Truck Brake Lever 7½" x 16½"
30112	1	Truck Brake Lever 7½" x 18 3/4"
30129	6	Brake Pins with Cotter Pins
30150	4	Brake Shoe
30170	4	Brake Shoe Key
30202	1	Bottom Truck Lever Connecting Rod
30230	2	Bottom Rod Guard
30260	4	Dust Guards with Wood Sealing Blocks
30570	2	Side Frame, Integral Box Type
30596	4	Journal Bearings
30610	4	Journal Box Lids with Pins
30623	4	Journal Box Wedges
30628	4	Journapak Lubricators
30630	1	Dead Lever Guide
30704	2	Simplex Unit Type Snubbers
30706	6	Truck Springs - Inner Coil
30707	6	Truck Springs - Outer Coil
30735	4	Truck Spring Plates
30753	2	Wheel and Axle Assembly
11375	4	Cotter Pin Retainer for #30085

REPAIR PARTS LIST

O. F. JORDAN CO.
EAST CHICAGO, INDIANA — U. S. A.

PAGE NO. 3-183-505 1 of 2

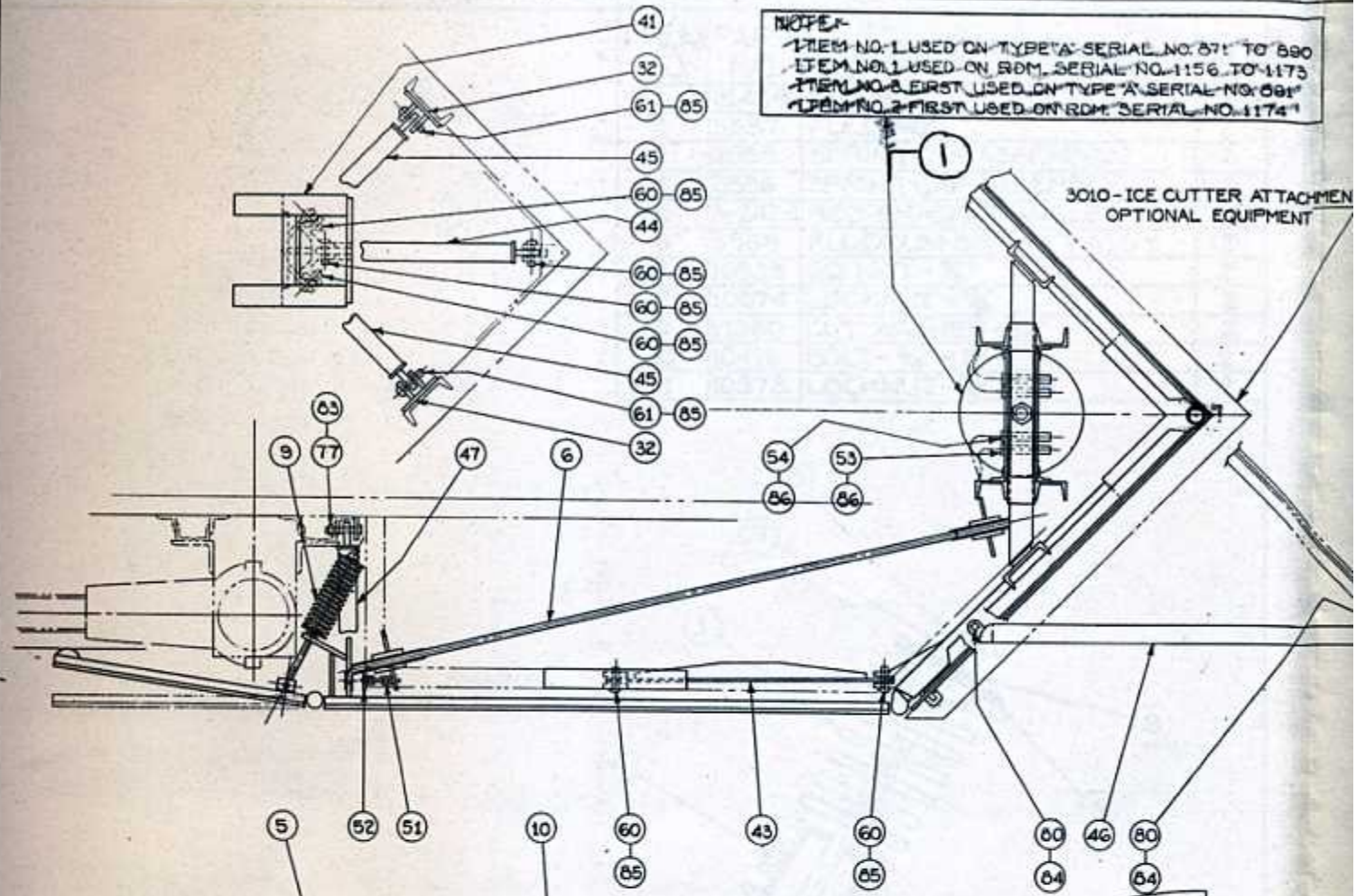
Date March 4, 1960

Model All Type "A" & Rdm. Cars
First Used on Type "A" Car # 871
First Used on Rdm. Car # 1171

PART NO.	NO. PER CAR	DESCRIPTION
		<u>BRAKE ARRANGEMENT</u>
30351	1	"ABD Valve
3-183-1	1	"ABD Valve Support Channel
3-183-2	1	"ABD Valve Support Channel
3-183-6	1	"ABD Valve Support Channel
10389	4	Bolts 5/8" x 12" for 30351 to 3-183-1 & 3-183-2
11030	4	Lockwashers 5/8" for 10389
30352	1	Air Brake Reservoir
3-183-8	1	Air Reservoir Support Channel (Rear)
3-183-9	1	Air Reservoir Support Channel (Front)
10532	3	Bolts 1" x 8" for 30352 to 3-183-8 & 3-183-9
11036	3	Lockwashers 1" for 10532
30350	1	10" Brake Cylinder
3229	1	Brake Cylinder Support for 30350
10376	6	Bolts 5/8" x 2" for 30350 to 3229
11030	6	Lockwashers 5/8" for 10376
3037	1	Push Rod
3125-500	1	Pin for 3037
11355	1	Cotter Pin for 3125-500
30357	1	Dirt Collector and Cutout Cock
30355	1	Branch Pipe Tee
3076	1	Support Assembly for 30355
30356	2	Angle Cocks
3-183-5	2	Angle Cock and Auxiliary Air Line Bracket (Rear)
3330-501	1	Angle Cock Bracket (Front)
10379	4	Bolts 5/8" x 2 1/2" for 3-183-5
11030	4	Lockwashers 5/8" for 10379
3360	2	U Bolts for 30356 to 3-183-5 and 3330-501
30363	2	Train Line Hoses
30358	1	Retainer Valve
3-182-13	1	Retainer Valve Support Plate
10353	2	Bolt 3/8" x 1 1/2" for 30358 to 3-182-13
11027	2	Lockwashers 3/8" for 10353
30298	1	Minor Power Handbrake #D-3290-XL
3-182-12	1	Handbrake Mounting Plate
10372	4	Bolts 5/8" x 1 1/2" for 30298 to 3-182-12
11030	4	Lockwashers 5/8" for 10372
3050-504	1	Handbrake Rod for 30298
D-3520	1	Bell Crank
3046	1	Bell Crank Holder Assembly
3125-500	1	Pin for D-3520 to 3046
3125-501	1	Pin for D-3520 to 3050-504
11355	2	Cotter Pin for 3125-500 and 3125-501
3013-516	1	Brake Cylinder Lever

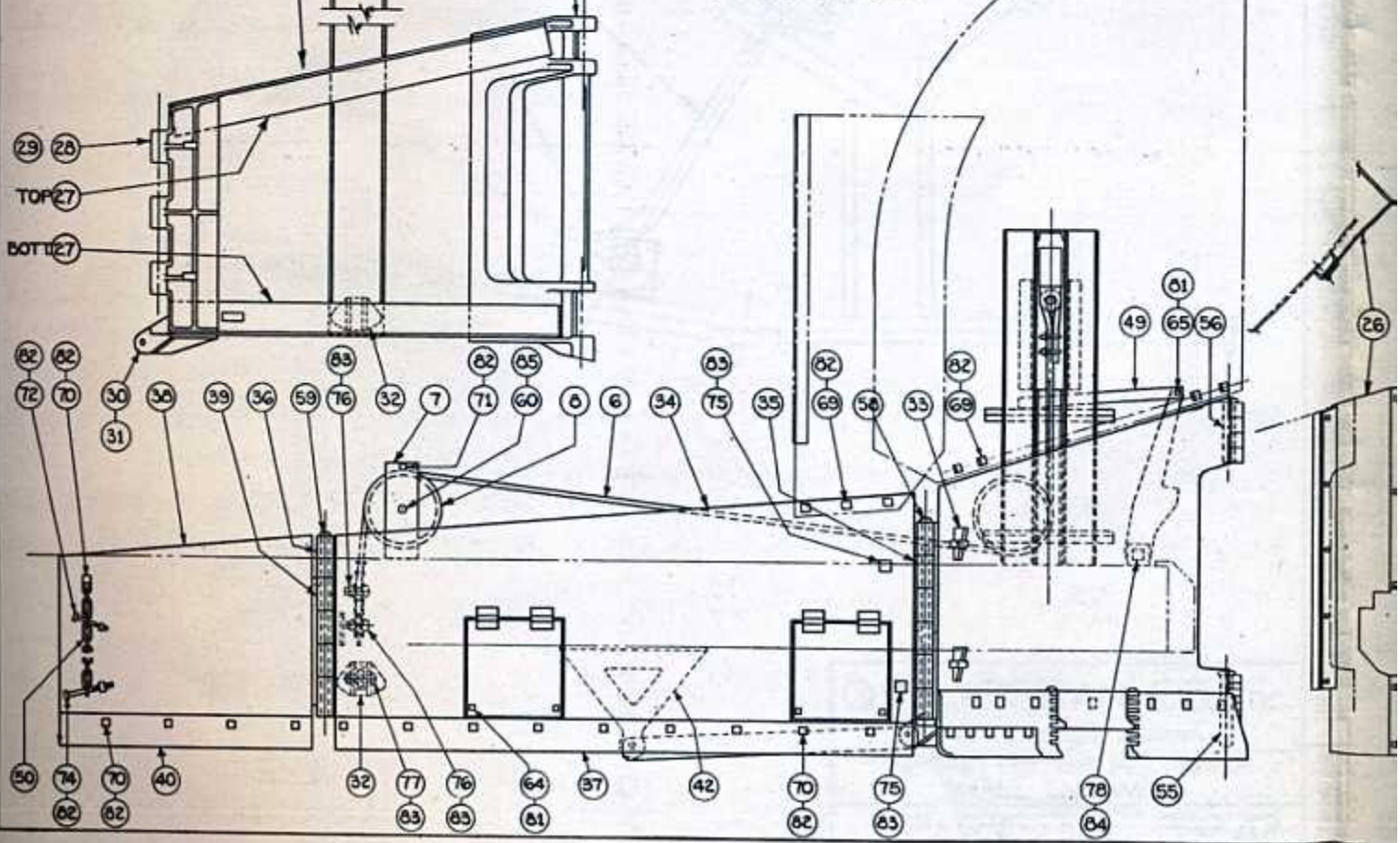
NOTE-
 ITEM NO. 1 USED ON TYPE "A" SERIAL NO. 871 TO 890
 ITEM NO. 1 USED ON RDM SERIAL NO. 1156 TO 1173
 ITEM NO. 2 FIRST USED ON TYPE "A" SERIAL NO. 891
 ITEM NO. 2 FIRST USED ON RDM SERIAL NO. 1174

3010-ICE CUTTER ATTACHMENT
 OPTIONAL EQUIPMENT



3-186-FLOW FRAME ASSEMBLY
 1-R.H. & 1-L.H.

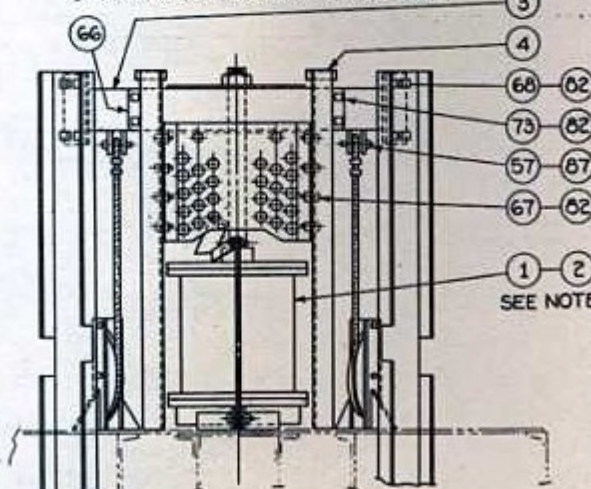
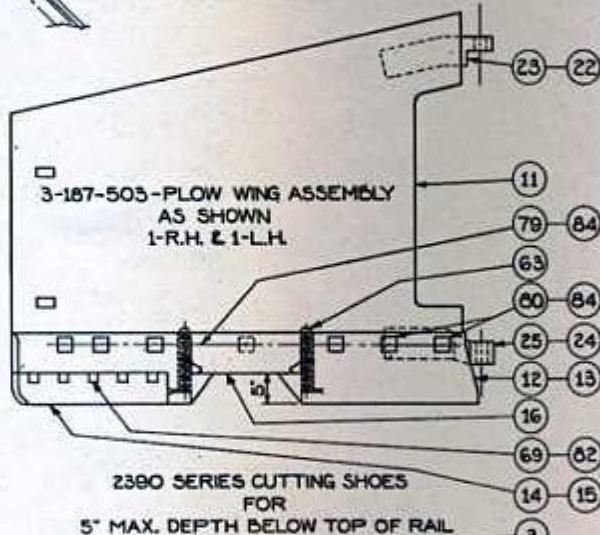
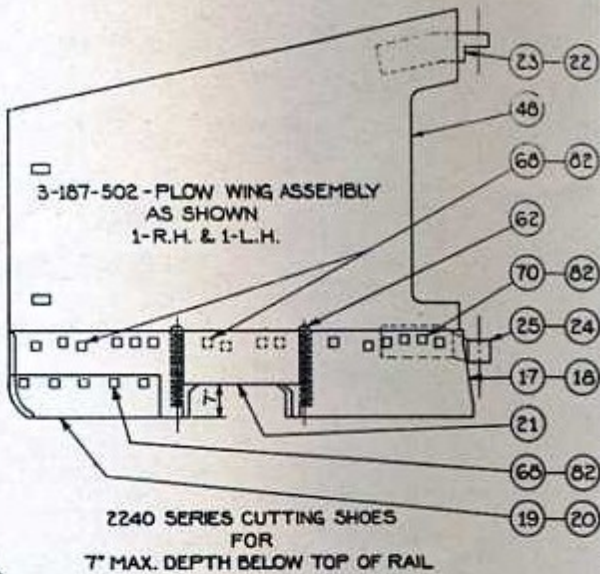
3-237-HIGH SNOW FLOW ATTACHMENT
 OPTIONAL EQUIPMENT



1730
1173
591
741

4058 HYD. CYL. 6"

ATTACHMENT
MENT



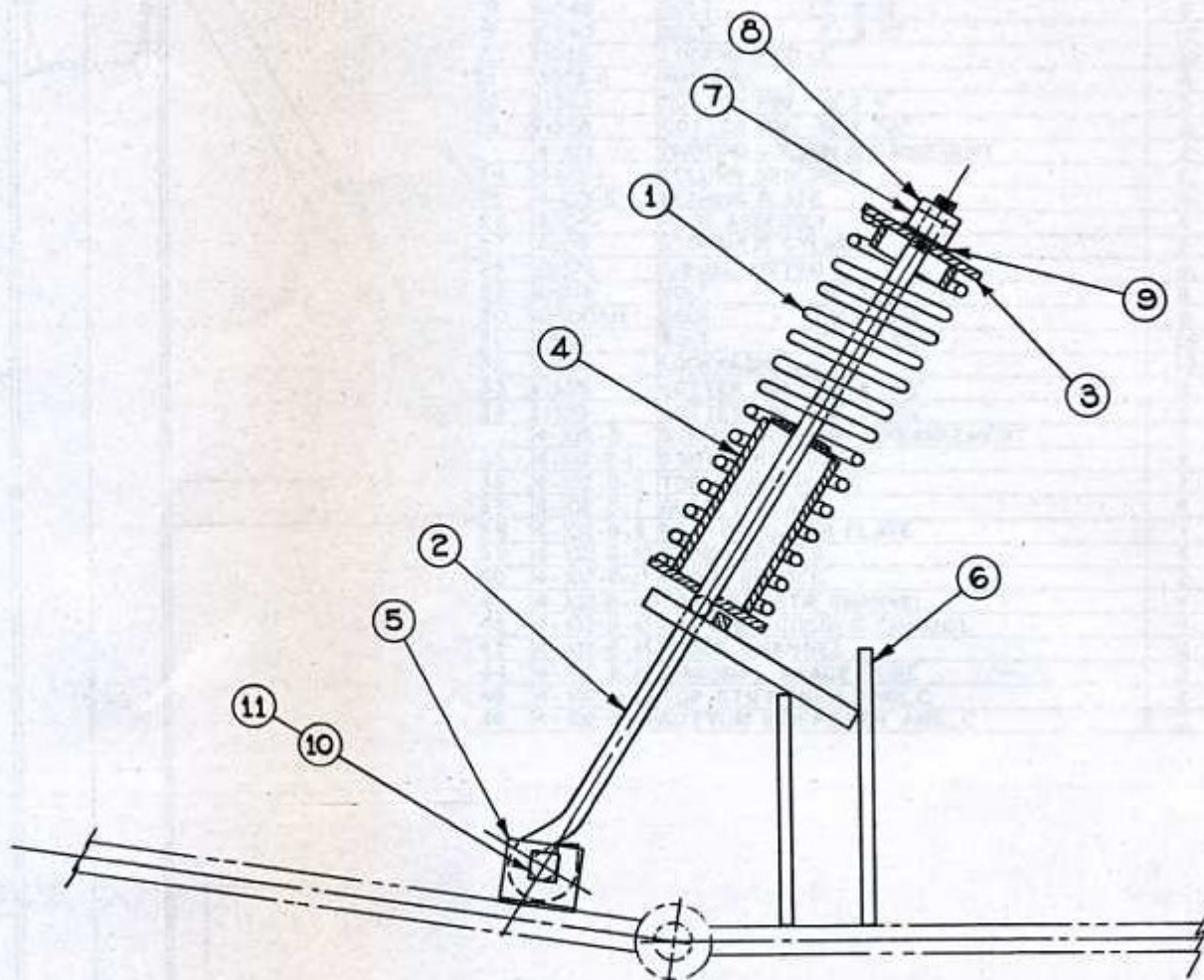
76	10562	BOLT	1/4" x 3"	1
79	10563	BOLT	1/4" x 3 1/2"	10
80	10567	BOLT	1/4" x 4"	8
81	11030	LOCKWASHER	3/8"	10
82	11032	LOCKWASHER	3/4"	140
83	11036	LOCKWASHER	1"	12
84	11040	LOCKWASHER	1 1/4"	19
85	11378	COTTER PIN	1/4" x 2"	22
86	11358	COTTER PIN	3/8" x 3 1/2"	4
87	11355	COTTER PIN	1/8" x 2 1/2"	2

ITEM NO	PART NO	DESCRIPTION	QTY
1	3348	17 1/2" FRONT FLOW CYLINDER (SEE NOTE)	1
2	3644	18" FRONT FLOW CYLINDER (SEE NOTE)	1
3	3530	FLOW LIFT BAR	1
4	3529	FLOW LIFT FRAME AND PIN RACK	1
5	3-186-3a	CENTER LIFT CHANNEL 1-R.H. & 1-L.H.	2
6	3550	FLOW LIFT CABLE ASSEMBLY	2
7	3532	SHEAVE BRACKET	4
8	2407	SHEAVE	4
9	3-242	SPRING HOLDING MECHANISM	2
10	2054	FLOW NOSE CASTING	1
11	3-187-P-503	FLOW WING PANEL ONLY 1-R.H. & 1-L.H.	2
12	2390	CUTTING SHOE 5' DEPTH R.H.	1
13	2391	CUTTING SHOE 5' DEPTH L.H.	1
14	2392	CUTTING SHOE 5' DEPTH R.H.	1
15	2393	CUTTING SHOE 5' DEPTH L.H.	1
16	2394	RAIL SHOE	2
17	2240	CUTTING SHOE 7' DEPTH R.H.	1
18	2241	CUTTING SHOE 7' DEPTH L.H.	1
19	2242	CUTTING SHOE 7' DEPTH R.H.	1
20	2243	CUTTING SHOE 7' DEPTH L.H.	1
21	2244	RAIL SHOE	2
22	2085	TOP HINGE L.H.	1
23	2084	TOP HINGE R.H.	1
24	2055	BOTTOM HINGE L.H.	1
25	2056	BOTTOM HINGE R.H.	1
26	4083	COUPLER HOLE COVER PLATE ASSEMBLY	1
27	3-186-T OR B	CHORD ANGLE - SPECIFY TOP OR BOT. - R.H. OR L.H.	2 EA.
28	2186	SIDE HINGE R.H.	1
29	2187	SIDE HINGE L.H.	1
30	2218	SIDE BRACE CONNECTION R.H.	1
31	2219	SIDE BRACE CONNECTION L.H.	1
32	69	BRACE CONNECTION	4
33	3-186-4	FLOW WING KEY	4
34	4-151	FLOW SIDE WING ASSEMBLY 1-R.H. & 1-L.H.	2
35	354	FRONT HINGE	2
36	2239	REAR HINGE	2
37	4-131-13	WEAR BAR	2
38	4-130	SMALL END WING ASSEMBLY 1-R.H. & 1-L.H.	2
39	353	HINGE	2
40	4-130-10	WEAR BAR	2
41	3263	FLOW BRACE FULCRUM	1
42	2185	BRACE FULCRUM	2
43	3440	FLOW FRAME BRACE	2
44	3491-512	FLOW BRACE	1
45	3491-513	FLOW BRACE	2
46	8523	FLOW BRACE	2
47	3491-514	SIDE WING BRACE	2
48	3-187-P-502	FLOW WING PANEL ONLY	2
49	3611	FLOW SAFETY MECHANISM	2
50	3171-504	SAFETY CHAIN	2
51	3130-500	SAFETY CHAIN	2
52	3-185-1	CHAIN CATCH	2
53	3551-500	FLOW ADJUSTMENT PIN AND CHAIN	2
54	3551-501	FLOW ADJUSTMENT PIN AND CHAIN	2
55	3176-503	PIN 2" x 13"	1
56	3176-501	PIN 2" x 11"	1
57	3186-511	PIN 1 1/2" x 4 1/2"	2
58	3254-500	PIN 1 1/8" x 3'-0"	2
59	3254-501	PIN 1 1/8" x 2'-10"	2
60	3184-500	PIN 1 1/4" x 4"	12
61	3124-503	PIN 1" x 5"	2
62	11250	PIN 3/4" x 12"	4
63	11240	PIN 3/4" x 10"	4
64	10376	BOLT 3/8" x 2"	8
65	10380	BOLT 3/8" x 3"	2
66	3530-5	GUIDE BAR	2
67	10390	BOLT 3/4" x 1 1/2"	16
68	10406	BOLT 3/4" x 2 1/2"	58
69	10412	BOLT 3/4" x 2 3/4"	24
70	10416	BOLT 3/4" x 3"	28
71	10433	BOLT 3/4" x 4 1/4"	4
72	10447	BOLT 3/4" x 6 1/2"	2
73	10453	BOLT 3/4" x 7"	4
74	10460	BOLT 3/4" x 9"	2
75	10505	BOLT 1" x 3"	4
76	10510	BOLT 1" x 4"	4
77	10518	BOLT 1" x 5"	4

O. F. JORDAN CO.
EAST CHICAGO, INDIANA
FRONT FLOW
ARRANGEMENT

PART No. 3-233

ITEM NO.	PART NO.	DESCRIPTION	QTY.
1	31456	SPRING	2
2	3557	FULL ROD	2
3	3555	SPRING CAP ASSEMBLY	2
4	3556	SPRING CAP ASSEMBLY	2
5	3-242-1	ROD BRACKET ANGLE	4
6	3558	FULCRUM BRACKET ASS'Y.	2
7	10939	SQ. NUT - $\frac{7}{8}$ "	2
8	10974	LOCKNUT - $\frac{7}{8}$ "	2
9	11060	CUT WASHER - $\frac{7}{8}$ "	2
10	10416	BOLT - $\frac{3}{4}$ " x 3"	2
11	10973	LOCKNUT - $\frac{3}{4}$ "	2

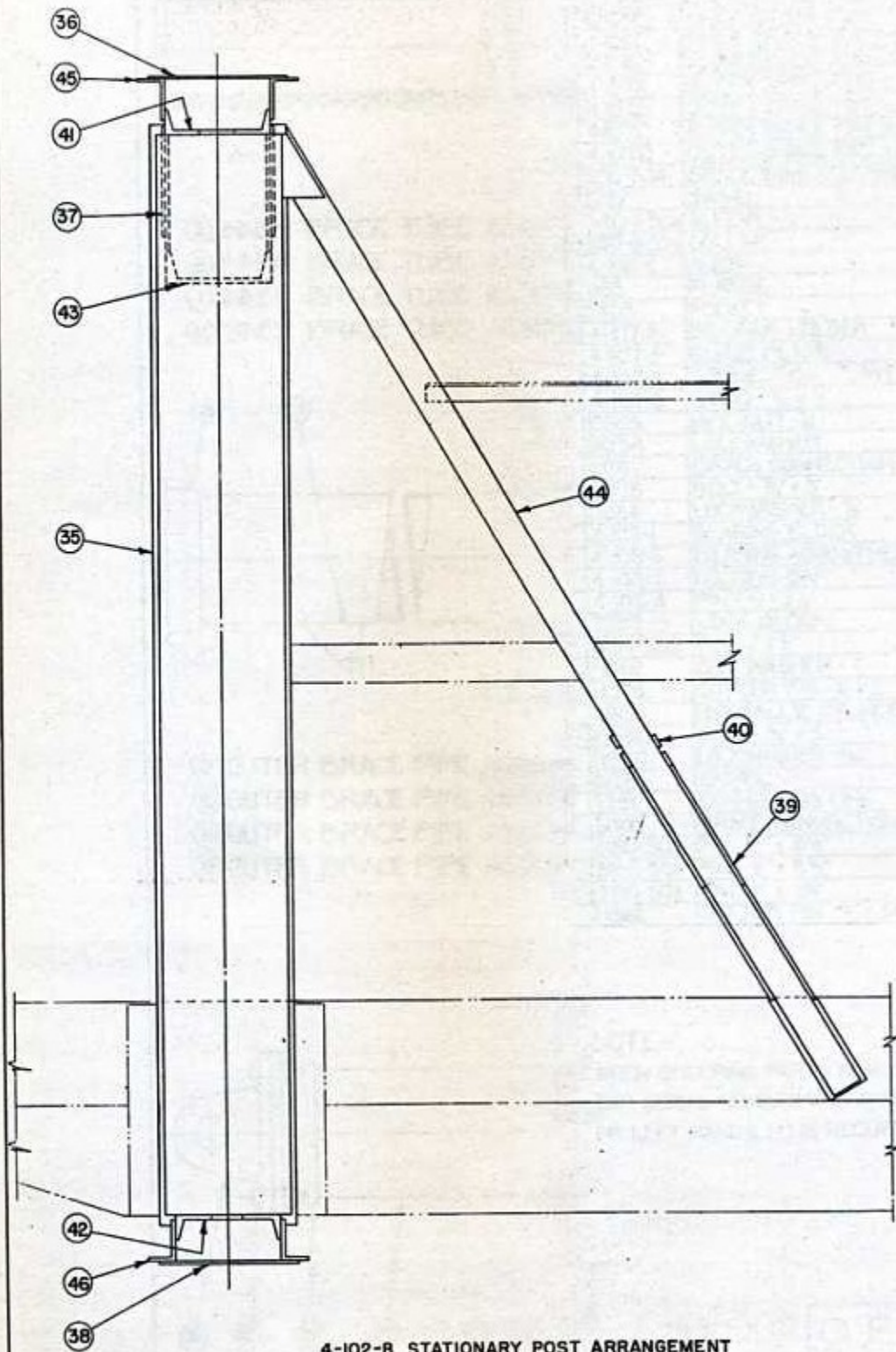


O. F. JORDAN CO. Inc.

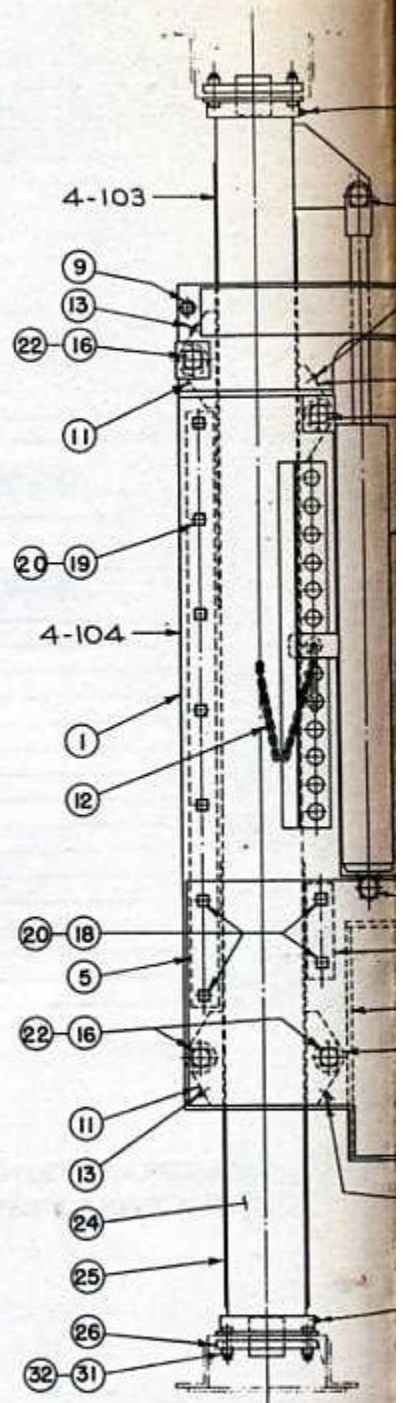
EAST CHICAGO, INDIANA

SPRING HOLDING MECHANISM
SMALL END WING

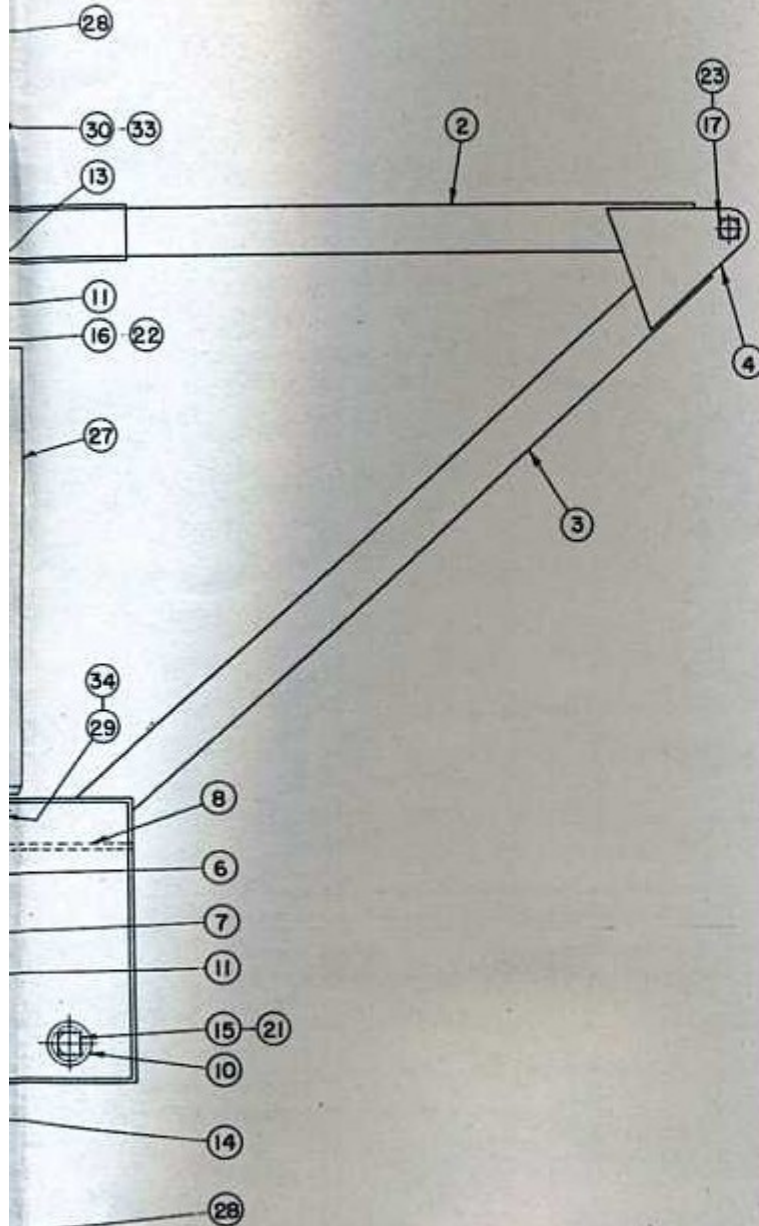
PART No. 3-242



4-102-B STATIONARY POST ARRANGEMENT



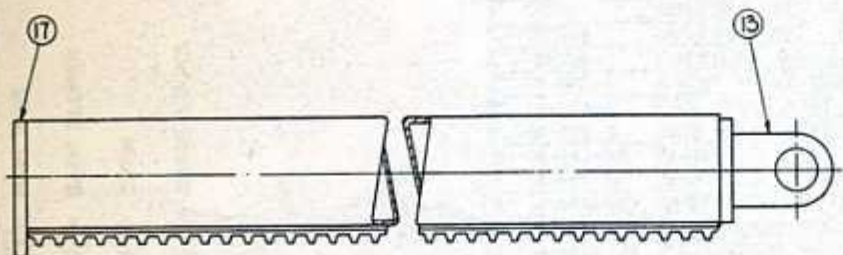
4-104 SLIDING POST ARRANGEMENT
AND
4-103 PIVOTING COLUMN ARRANGEMENT



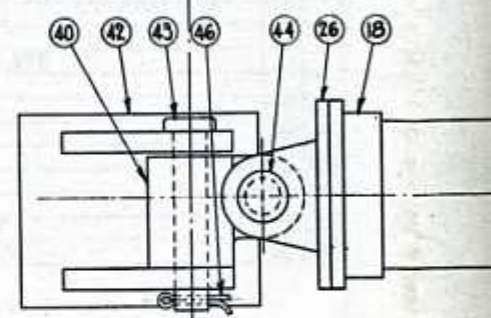
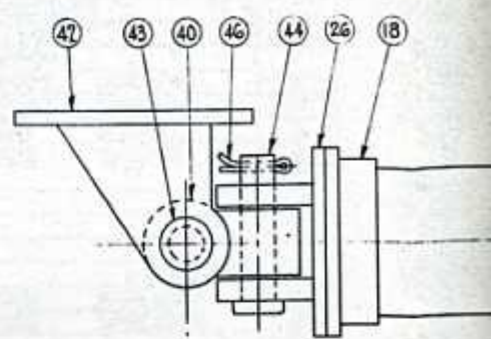
ITEM NO.	PART NUMBER	DESCRIPTION	QTY.
	4-104	SLIDING POST ARRANGEMENT I-RH. & I-L.H	2
1	4-104-1	SLIDING COLUMN SIDE PLATES I-RH. & I-L.H	4
2	4-104-3	LIFT ARM	2
3	4-104-4	SUPPORT ARM	2
4	4-104-5	TOP CONNECTION	4
5	4-104-12	REAR SPACER	2
6	4-104-13	FRONT SPACER	2
7	4-104-14	HINGE SPACER - VERTICAL	2
8	4-104-15	HINGE SPACER - HORIZONTAL	2
9	4-104-17	SPREADER TUBE	2
10	4-104-18	HINGE BUSHING	2
11	2408	SLIDING SHOE	8
12	4057	STOP PIN & CHAIN ASSEMBLY	2
13	25376	GREASE FITTING	6
14	25377	GREASE FITTING	2
15	10628	BOLT 2" X 14"	2
16	10625	BOLT 2" X 13"	8
17	10620	BOLT 2" X 10"	2
18	10545	BOLT 1" X 12"	8
19	10540	BOLT 1" X 10"	12
20	11036	LOCKWASHER - 1"	20
21	3022-2	WASHER	4
22	11363	COTTER PIN 1/2" X 4"	8
23	11358	COTTER PIN 3/8" X 3 1/2"	2
	4-103	PIVOTING COLUMN ARRANGEMENT	2
24	4-103-1	COLUMN ASSEMBLY	2
25	4-103-5	BEARING PLATE	4
26	4004	PIVOT ASSEMBLY	4
27	4059	HYDRAULIC CYLINDER	2
28	25376	GREASE FITTING	8
29	10611A	BOLT 1 1/2" X 12"	8
30	10600AM	BOLT 1 1/2" X 4 1/2"	2
31	10507	BOLT 1" X 3 1/2"	16
32	11036	LOCKWASHER - 1"	16
33	11358	COTTER PIN 3/8" X 3 1/2"	2
34	11355	COTTER PIN 3/8" X 2 1/2"	2
	4-102-B	STATIONARY POST ARRANGEMENT	1
35	4-102-B-1	STATIONARY POST	2
36	4-102-B-3	TOP COVER PLATE	1
37	4-102-B-7	GUSSET PLATE	4
38	4-102-B-9	BOTTOM COVER PLATE	1
39	4-102-B-10	CROSS BRACES	4
40	4-102-B-11	CROSS BRACES	2
41	4-102-B-12	TOP CROSSTIE CHANNEL	1
42	4-102-B-13	BOTTOM CROSSTIE CHANNEL	1
43	4-102-B-14	BRACE CHANNEL	2
44	4-102-B-16	DIAGONAL BRACE TUBE	2
45	4-102-B-18	TOP STIFFENER ANGLE	2
46	4-102-B-19	BOTTOM STIFFENER ANGLE	2

EMENT
NGEMENT

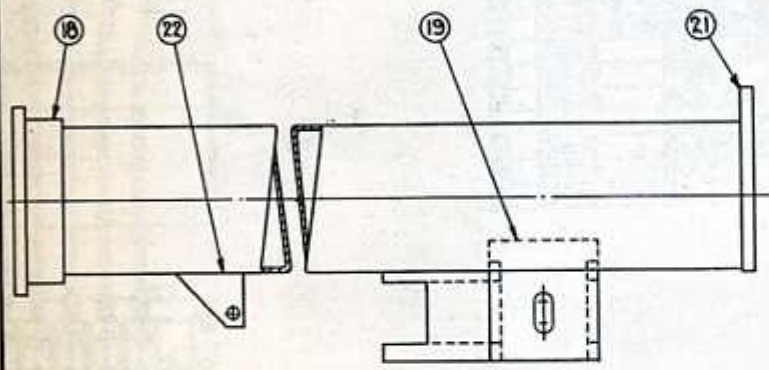
O. F. JORDAN CO., INC.
EAST CHICAGO, INDIANA
MAIN WING
VERTICAL POST
PART No. 4-104



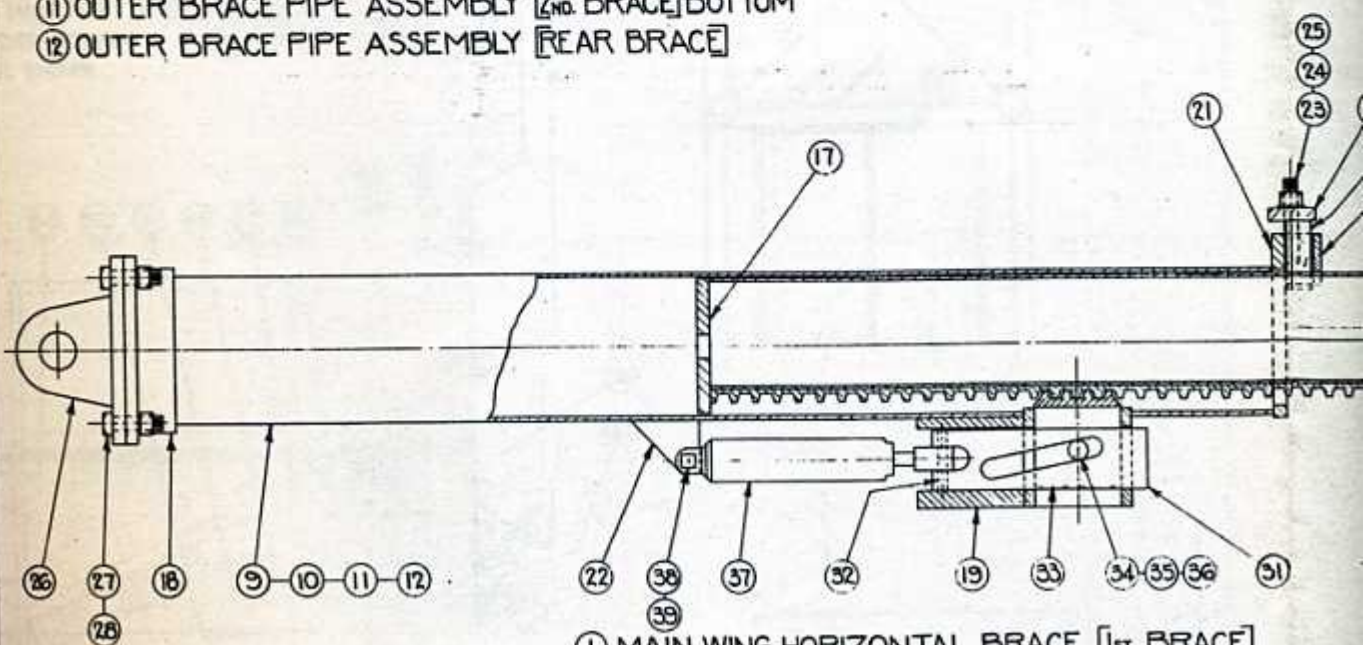
- ⑤ INNER BRACE TUBE ASSEMBLY [1st. BRACE]
- ⑥ INNER BRACE TUBE ASSEMBLY [2nd. BRACE] TOP
- ⑦ INNER BRACE TUBE ASSEMBLY [2nd. BRACE] BOTTOM
- ⑧ INNER BRACE TUBE ASSEMBLY [REAR BRACE]



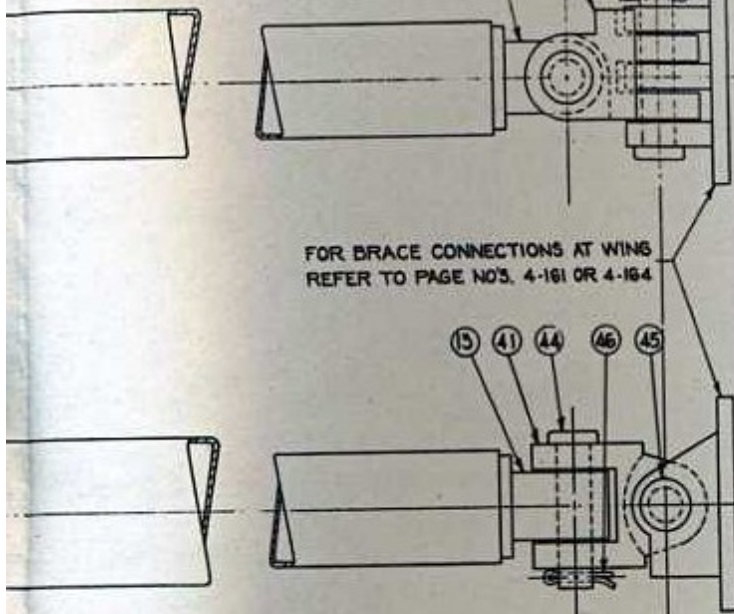
TYPICAL CONNECTION AT CAR BODY



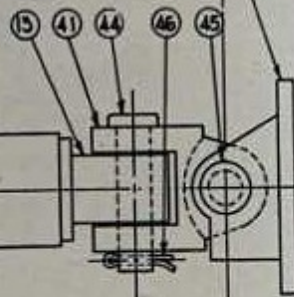
- ⑨ OUTER BRACE PIPE ASSEMBLY [1st. BRACE]
- ⑩ OUTER BRACE PIPE ASSEMBLY [2nd. BRACE] TOP
- ⑪ OUTER BRACE PIPE ASSEMBLY [2nd. BRACE] BOTTOM
- ⑫ OUTER BRACE PIPE ASSEMBLY [REAR BRACE]



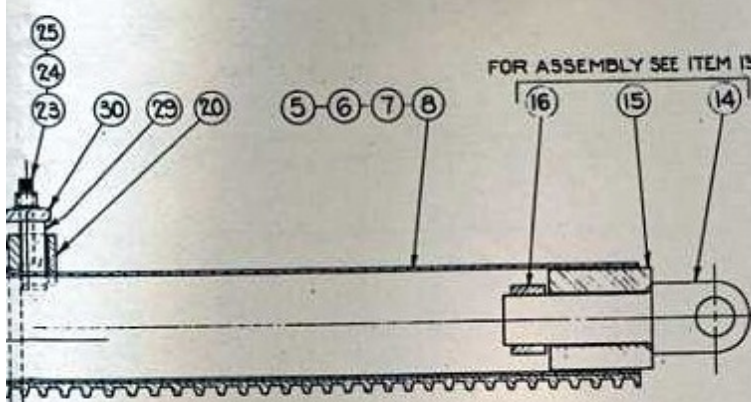
- ① MAIN WING HORIZONTAL BRACE [1st. BRACE]
- ② MAIN WING HORIZONTAL BRACE [2nd. BRACE] TOP
- ③ MAIN WING HORIZONTAL BRACE [2nd. BRACE] BOTTOM
- ④ MAIN WING HORIZONTAL BRACE [REAR BRACE]



FOR BRACE CONNECTIONS AT WING
REFER TO PAGE NO.3, 4-161 OR 4-164



TYPICAL CONNECTION
AT WING



FOR ASSEMBLY SEE ITEM 13

ITEM NO.	PART NO.	DESCRIPTION	QTY.
1	4-105A	MAIN WING HORIZONTAL BRACE (1st. BRACE)	2
2	4-105B	MAIN WING HORIZONTAL BRACE (2nd. BRACE) TOP	2
3	4-105C	MAIN WING HORIZONTAL BRACE (2nd. BRACE) BOT. T.	2
4	4-105D	MAIN WING HORIZONTAL BRACE (REAR BRACE)	2
5	4-106A	INNER BRACE TUBE ASSEMBLY (1st. BRACE)	2
6	4-106B	INNER BRACE TUBE ASSEMBLY (2nd. BRACE) TOP	2
7	4-106C	INNER BRACE TUBE ASSEMBLY (2nd. BRACE) BOT. T.	2
8	4-106D	INNER BRACE TUBE ASSEMBLY (REAR BRACE)	2
9	4-107A	OUTER BRACE PIPE ASSEMBLY (1st. BRACE)	2
10	4-107B	OUTER BRACE PIPE ASSEMBLY (2nd. BRACE) TOP	2
11	4-107C	OUTER BRACE PIPE ASSEMBLY (2nd. BRACE) BOT. T.	2
12	4-107D	OUTER BRACE PIPE ASSEMBLY (REAR BRACE)	2
13	3120-504	BRACE WING END ASSEMBLY	8
14	2252	SWIVEL	8
15	3120-1-504	SLEEVE	8
16	3120-2-504	COLLAR	8
17	4-106-2	GUIDE	8
18	2163	FLANGE	8
19	2403	POCKET	8
20	4-107-2	BEARING HOLDER	8
21	4-107-3	GUIDE PLATE	8
22	4-107-4	CONNECTION PLATE	8
23	4-107-5	STUD - 1/2" x 5"	16
24	10903	HEX. NUT - 1/2"	16
25	11034	LOCKWASHER	16
26	3118	BRACE CONNECTION - CAR END	8
27	10478	BOLT - 1/2" x 3"	32
28	11034	LOCKWASHER - 1/2"	32
29	4-105-1	BEARING BLOCK	8
30	4-105-3	BEARING ADJUSTMENT BLOCK	8
31	4-105-2	LOCKING BAR	8
32	4-105-4	PIN - 1/2" x 3 1/2"	8
33	2399-B	LOCK BLOCK	8
34	3124-503	PIN - 1" x 5"	8
35	11062	CUT WASHER - 1"	8
36	11378	COTTER PIN - 1/2" x 2"	8
37	4066	HYDRAULIC CYLINDER	8
38	10380	BOLT - 1/2" x 3"	8
39	11030	LOCKWASHER - 5/8"	8
40	2128	SWIVEL	8
41	2251	CONNECTING LINK	8
42	3060	BRACE CONNECTION	8
43	3180-500	PIN - 2" x 10 1/2"	8
44	3180-501	PIN - 2" x 8 1/2"	16
45	3180-502	PIN - 2" x 9 1/2"	8
46	11362	COTTER PIN - 1/2" x 3 1/2"	32

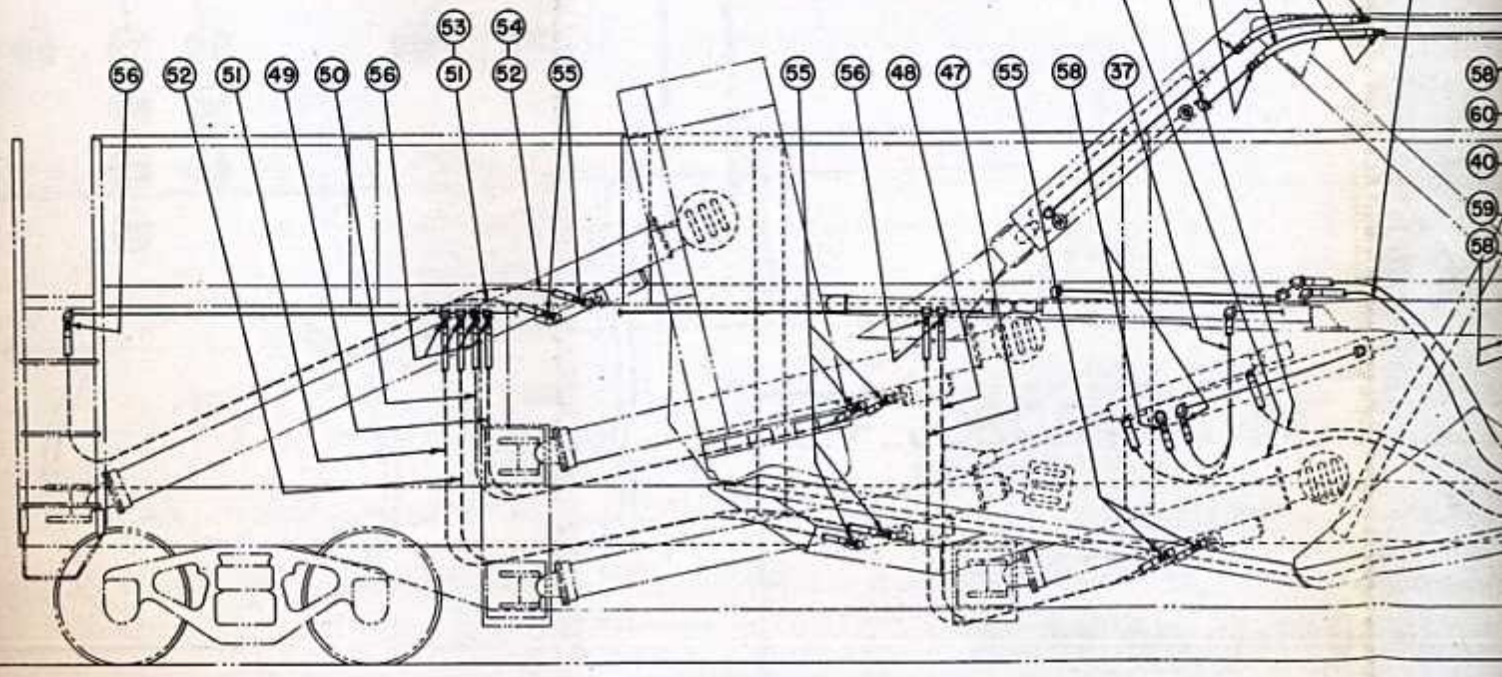
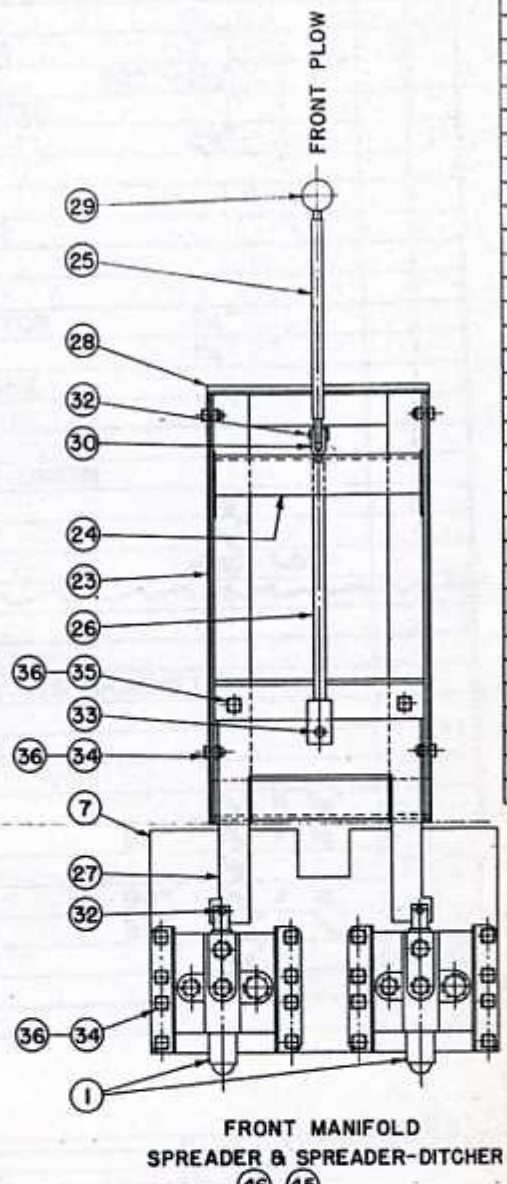
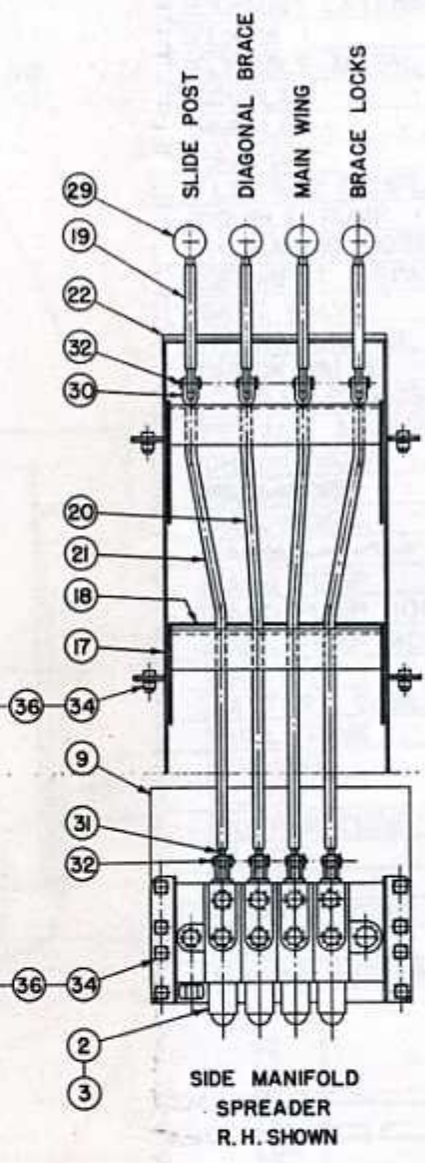
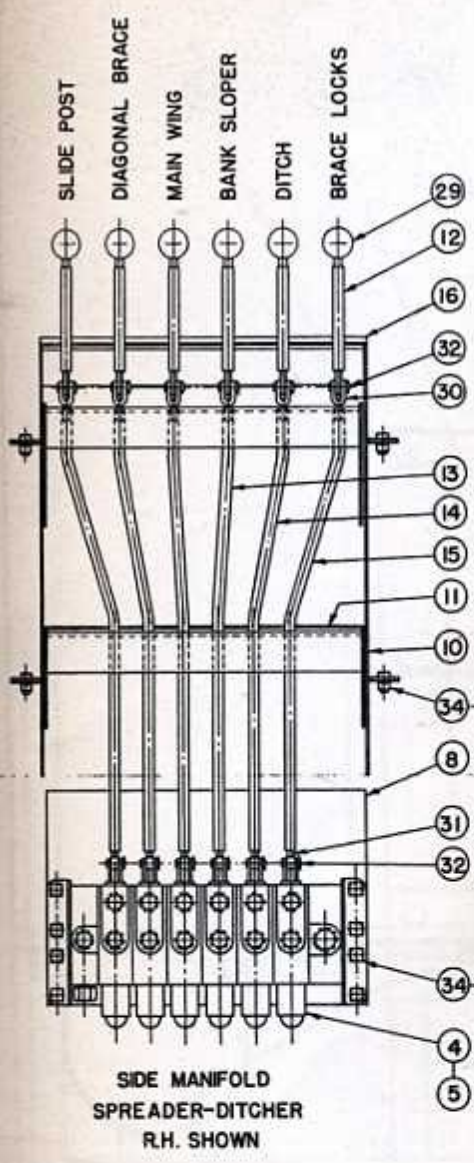
NOTE-

WHEN ORDERING PARTS ALWAYS SPECIFY MANUFACTURERS
CAR SERIAL NUMBER AND ALSO SPECIFY IF RIGHT HAND (R.H.)
OR LEFT HAND (L.H.) IS REQUIRED.

O. F. JORDAN CO. INC.
EAST CHICAGO, INDIANA
MAIN WING
HORIZONTAL BRACES
PART No. 4-105

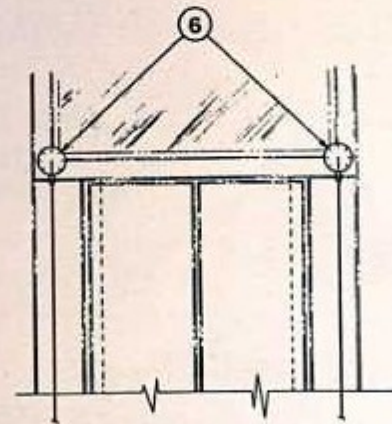
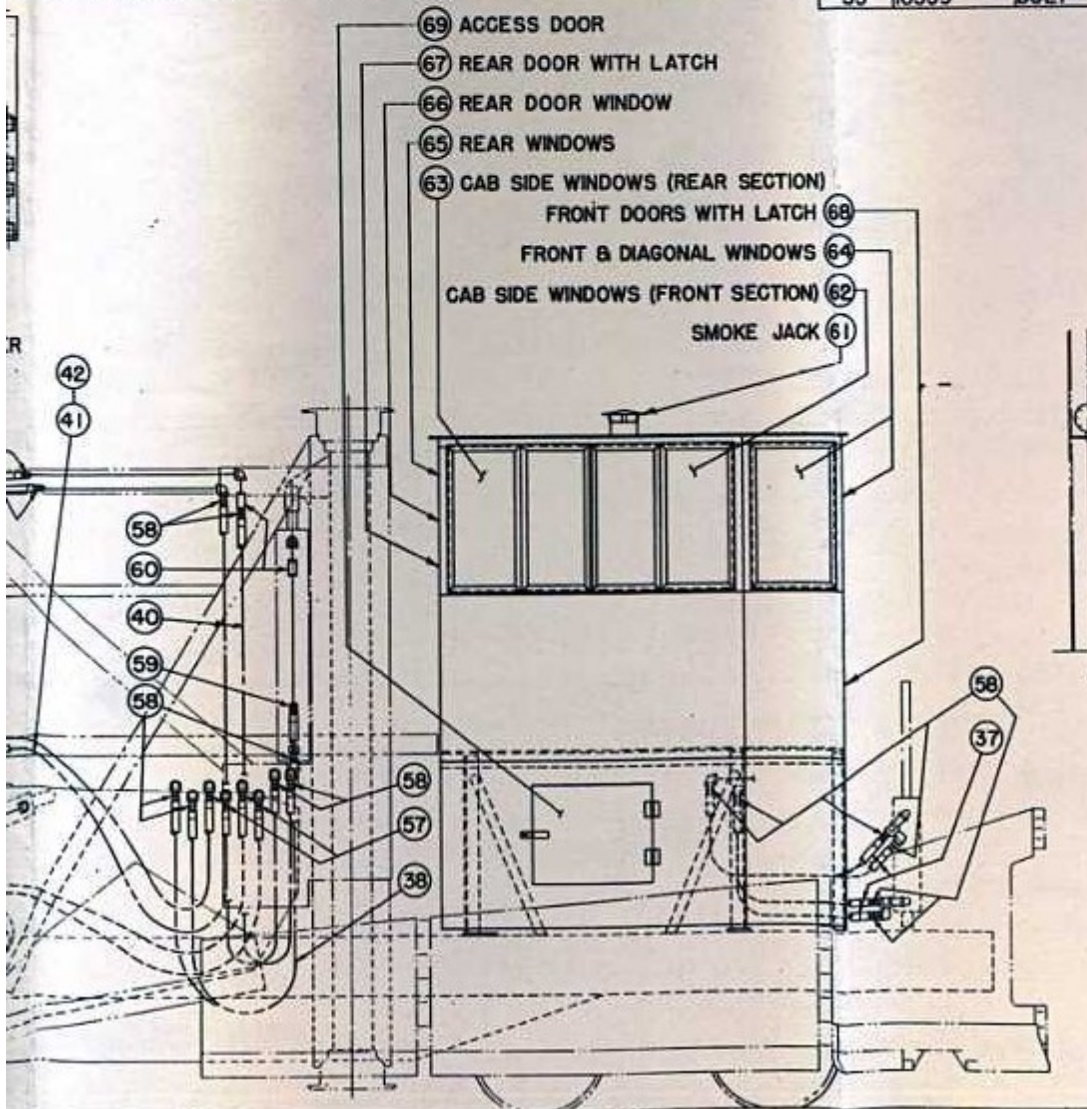
TOP
BOTTOM
[]

ITEM NO.	PART NUMBER
36	11028
37	24504
38	24506
39	24502
40	24508
41	24554
42	24550
43	24556
44	24558
45	24552
46	24553
47	24544
48	24541
49	24542
50	24543
51	24544
52	24545
53	24546
54	24547
55	24600
56	24602
57	24604
58	24606
59	24612
60	31666
61	3115A
62	25105
63	25106
64	25107
65	25108
66	25109
67	25262
68	25269
69	3539-



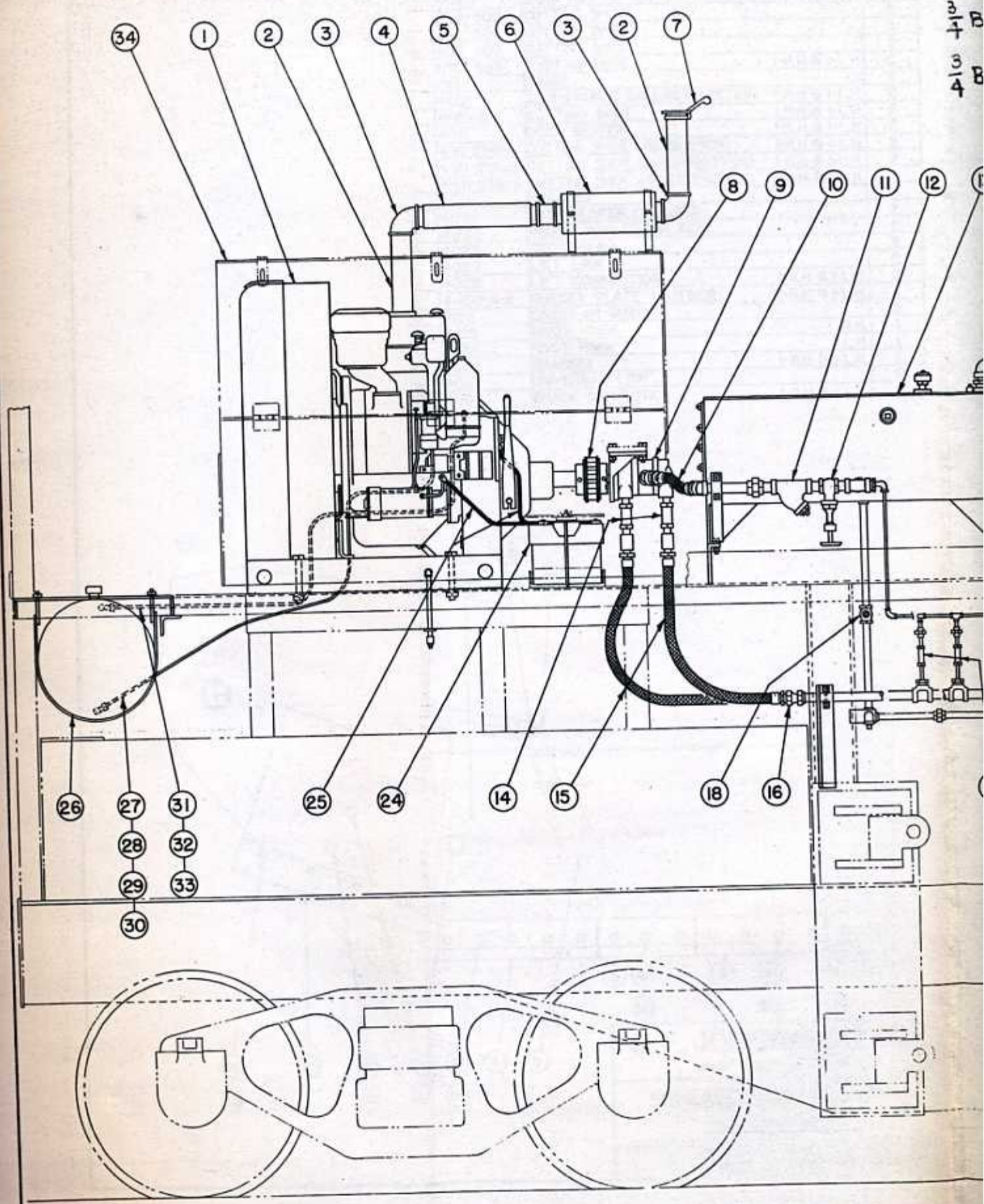
ITEM NO.	PART NUMBER	DESCRIPTION	QTY.
36	11028	LOCKWASHERS - 1/2"	TO SUIT
37	24504	HYDRAULIC HOSE	8
38	24506	HYDRAULIC HOSE	4
39	24502	HYDRAULIC HOSE	4
40	24508	HYDRAULIC HOSE	4
41	24554	HYDRAULIC HOSE (LONG WING)	4
42	24550	HYDRAULIC HOSE (SHORT WING)	4
43	24556	HYDRAULIC HOSE (LONG WING)	2
44	24558	HYDRAULIC HOSE (LONG WING)	2
45	24552	HYDRAULIC HOSE (SHORT WING)	2
46	24553	HYDRAULIC HOSE (SHORT WING)	2
47	24540	HYDRAULIC HOSE	2
48	24541	HYDRAULIC HOSE	2
49	24542	HYDRAULIC HOSE	2
50	24543	HYDRAULIC HOSE	2
51	24544	HYDRAULIC HOSE (LONG WING)	4
52	24545	HYDRAULIC HOSE (LONG WING)	4
53	24546	HYDRAULIC HOSE (SHORT WING)	2
54	24547	HYDRAULIC HOSE (SHORT WING)	2
55	24600	MALE ADAPTER UNION	16
56	24602	MALE ADAPTER UNION	16
57	24604	MALE ADAPTER UNION	8
58	24606	MALE ADAPTER UNION	24
59	24612	FEMALE ADAPTER UNION	10
60	31666	FLOW CONTROL VALVE	4
61	3115A	SMOKE JACK	1
62	25105	SIDE WINDOW (FRONT SECTION)	2
63	25106	SIDE WINDOW (REAR SECTION)	2
64	25107	FRONT & DIAGONAL WINDOWS	2
65	25108	REAR WINDOWS	2
66	25109	REAR DOOR WINDOW	1
67	25262	REAR DOOR WITH LATCH	1
68	25269	FRONT DOORS WITH LATCH	1
69	3539-5	ACCESS DOOR	1

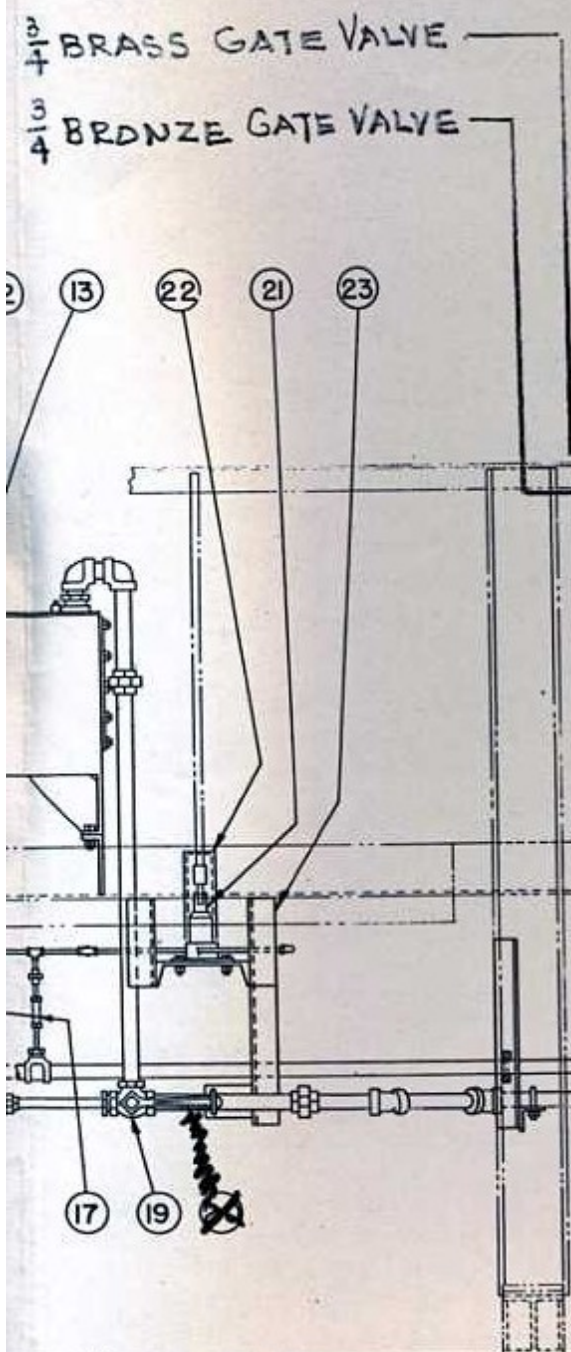
ITEM NO.	PART NUMBER	DESCRIPTION	QTY.
1	31934	MULTIPLE UNIT VALVE - FRONT	2
2	31935	MULTIPLE UNIT VALVE - SPREADER	R.H. 1
3	31936	MULTIPLE UNIT VALVE - SPREADER	L.H. 1
4	31937	MULTIPLE UNIT VALVE - DITCHER	R.H. 1
5	31938	MULTIPLE UNIT VALVE - DITCHER	L.H. 1
6	31036	PRESSURE GAUGE 0" - 3000"	2
7	4-125-1	FRONT VALVE UNIT SUPPORT	1
8	4-125-2	SIDE VALVE UNIT SUPPORT DITCHER	2
9	4-125-3	SIDE VALVE UNIT SUPPORT SPREADER	2
10	4-141-AB	MANIFOLD BOX SIDE DITCHER	2
11	4-141-AF	MANIFOLD FRAME SIDE DITCHER	2
12	4-141A-10	OPERATING LEVER	12
13	4-141A-13	EXTENSION ROD	4
14	4-141A-14	EXTENSION ROD	4
15	4-141A-15	EXTENSION ROD	4
16	4-141A-17	INSTRUCTION PLATE I-R.H. & I-L.H.	2
17	4-160-B	MANIFOLD BOX SIDE SPREADER	2
18	4-160-F	MANIFOLD FRAME SIDE SPREADER	2
19	4-160-12	OPERATING LEVER	8
20	4-160-13	EXTENSION ROD	4
21	4-160-14	EXTENSION ROD	4
22	4-160-15	INSTRUCTION PLATE I-R.H. & I-L.H.	2
23	4-142-BB	MANIFOLD BOX FRONT	1
24	4-142-BF	MANIFOLD FRAME FRONT	1
25	4-142-B-16	OPERATING LEVER	1
26	4-142-B-17	EXTENSION ROD	1
27	4-142-B-13	VALVE OPERATING PLATE	1
28	4-142-B-15	INSTRUCTION PLATE	1
29	31828	BALL HANDLE	TO SUIT
30	31829	YOKE	TO SUIT
31	31830	ROD END	TO SUIT
32	31831	CLEVIS PIN	TO SUIT
33	31832	CLEVIS PIN	1
34	10358	BOLT 1/2" x 1"	TO SUIT
35	10359	BOLT 1/2" x 1 1/2"	TO SUIT



O. F. JORDAN CO., INC.
 EAST CHICAGO, INDIANA
 OPERATORS CAB, MANIFOLDS
 AND
 HOSE ARRANGEMENT
 PART No. 4-125

3
4
B

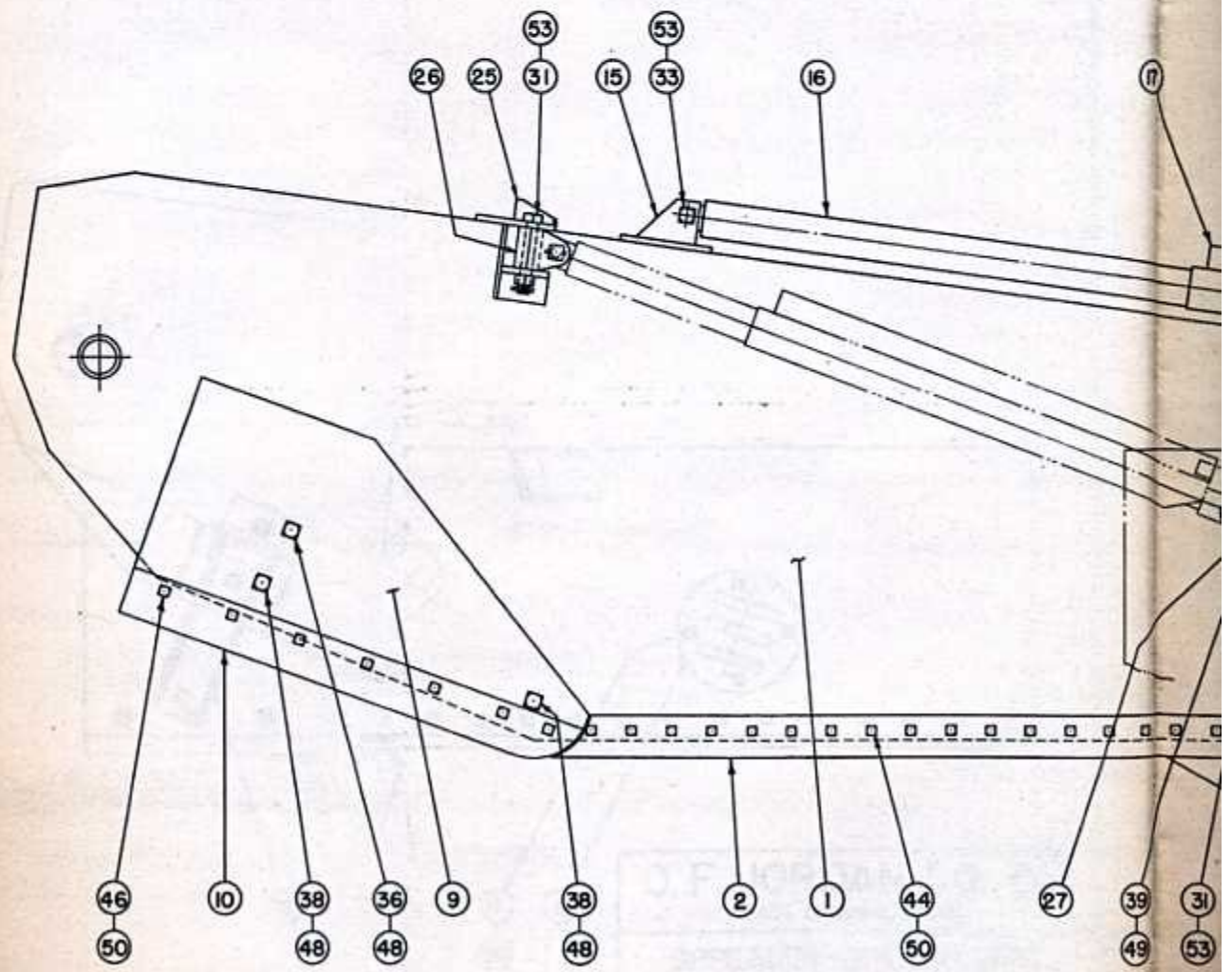




ITEM NO.	PART NUMBER	DESCRIPTION	QTY.
1	31900	DIESEL ENGINE	1
2	2 1/2 PNI2	EXHAUST EXTENSION	2
3	10095	ELBOW 90° 2 1/2"	2
4	31941	FLEXIBLE METAL HOSE	1
5	10060	COUPLING 2 1/2"	1
6	31940	MUFFLER	1
7	31911	RAIN CAP	1
8	31915	FLEXIBLE COUPLING	1
9	31920	DOUBLE PUMP	1
10	24560	HYDRAULIC HOSE	1
11	31665	SEDIMENT SEPARATOR 1 1/4"	1
12	31664	GATE VALVE 1 1/4"	1
13	31922	HYDRAULIC OIL TANK	1
14	31640	CHECK VALVE 3/4"	2
15	25510	HYDRAULIC HOSE	2
16	24614	FEMALE ADAPTER UNION	2
17	31638	CHECK VALVE 3/8"	2
18	31570	IRON LOCK 3/4"	1
19	31516	IRON LOCK 3/4"	1
20	31686 F	HANDLE	1
21	31925	HAND PUMP	1
22	4119	HAND PUMP HOOD	1
23	4117	HAND PUMP MOUNTING BRACKET	1
24	31930	BATTERY	1
25	31932	BATTERY CABLES	2
26	31923	FUEL TANK	1
27	10020	BUSHING 1/2" x 3/8"	1
28	24186	ELBOW 90° 3/8" x 3/8"	1
29	24102	COPPER TUBE 3/8"	6'-0"
30	24184	ELBOW 90° 3/8" x 1/4"	1
31	24183	ELBOW 90° 5/16" x 3/8"	1
32	24101	COPPER TUBE 5/16"	6'-0"
33	24201	NUT 5/16"	1
34	4-136	ENGINE HOUSING	1

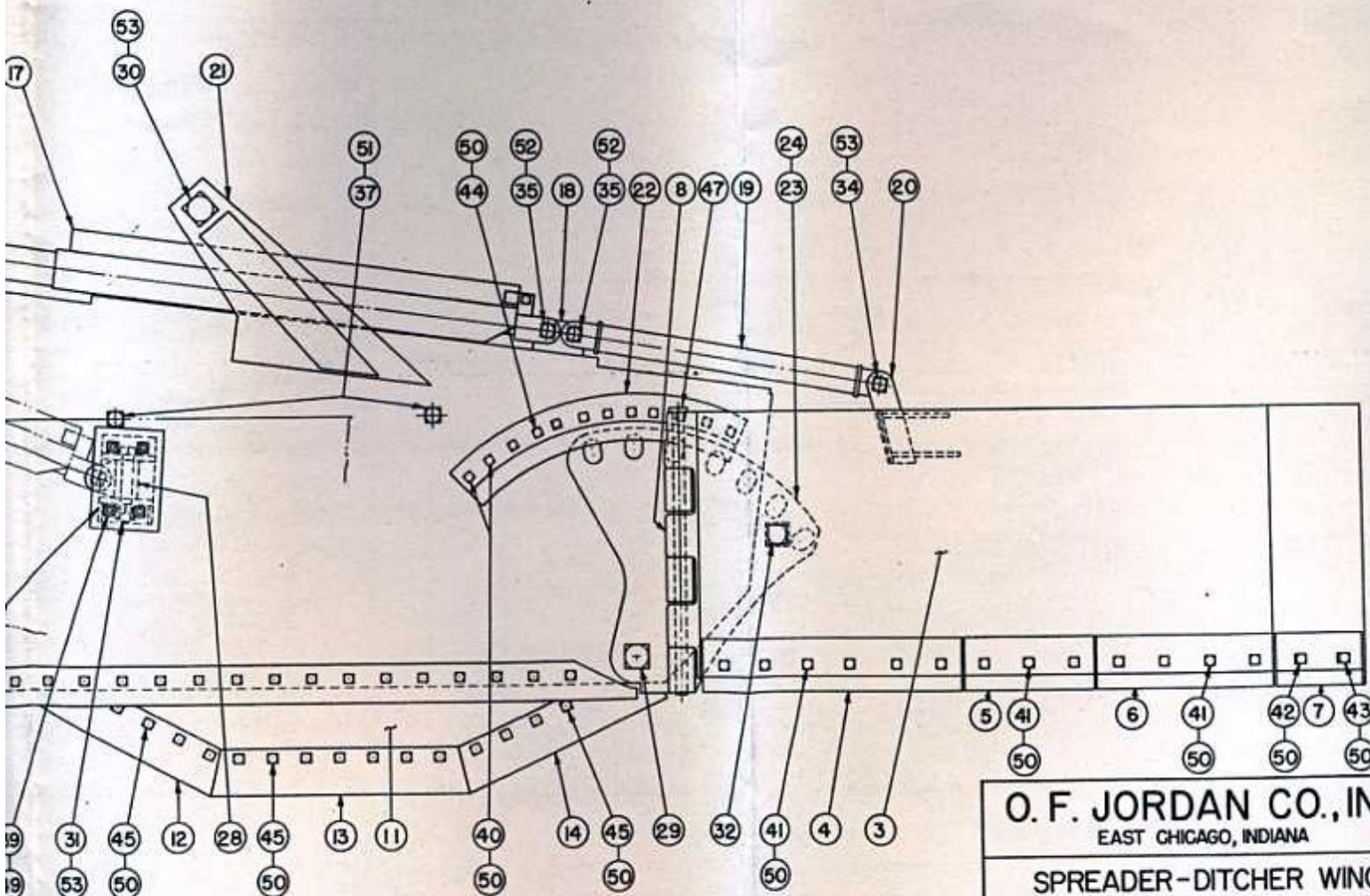
O. F. JORDAN CO., INC.
 EAST CHICAGO, INDIANA
 HYDRAULIC POWER UNIT
 ARRANGEMENT
 PART No. 4-146

ITEM NO.	PART NUM.
28	415
29	3064-
30	10624
31	10606
32	10600
33	10603
34	10602
35	10601
36	10580
37	10579
38	10567
39	0495
40	0442
41	0437
42	0435
43	0426
44	0412
45	0406
46	0399
47	3232-
48	1040
49	1034
50	1032
51	1378
52	1356
53	1355



PART NUMBER	DESCRIPTION	QTY.
4115	UNIVERSAL LINK	2
3064-503	BOLT 2" X 12"	2
10624	BOLT 2" X 12"	2
10606	BOLT 1 1/2" X 9"	4
10600	BOLT 1 1/2" X 7"	2
10603	BOLT 1 1/2" X 6 1/2"	2
10602	BOLT 1 1/2" X 6"	2
10601	BOLT 1 1/2" X 5"	4
10580	BOLT 1 1/2" X 10"	2
10579	BOLT 1 1/2" X 8 1/2"	4
10567	BOLT 1 1/2" X 4"	4
10495	BOLT 3/4" X 5 1/2"	8
10442	BOLT 3/4" X 5 1/2"	4
10437	BOLT 3/4" X 4 1/2"	26
10435	BOLT 3/4" X 4 1/2"	2
10426	BOLT 3/4" X 3 1/2"	2
10412	BOLT 3/4" X 2 1/2"	TO SUIT
10406	BOLT 3/4" X 2 1/2"	TO SUIT
10399	BOLT 3/4" X 1 1/2"	TO SUIT
3232-500	PIN 1 1/2" X 3'-2"	2
11040	LOCKWASHER 1 1/2"	6
11034	LOCKWASHER 1 1/2"	8
11032	LOCKWASHER 1 1/2"	TO SUIT
11378	COTTER PIN 1/2" X 2"	4
11356	COTTER PIN 1/2" X 3"	4
11355	COTTER PIN 1/2" X 2 1/2"	10

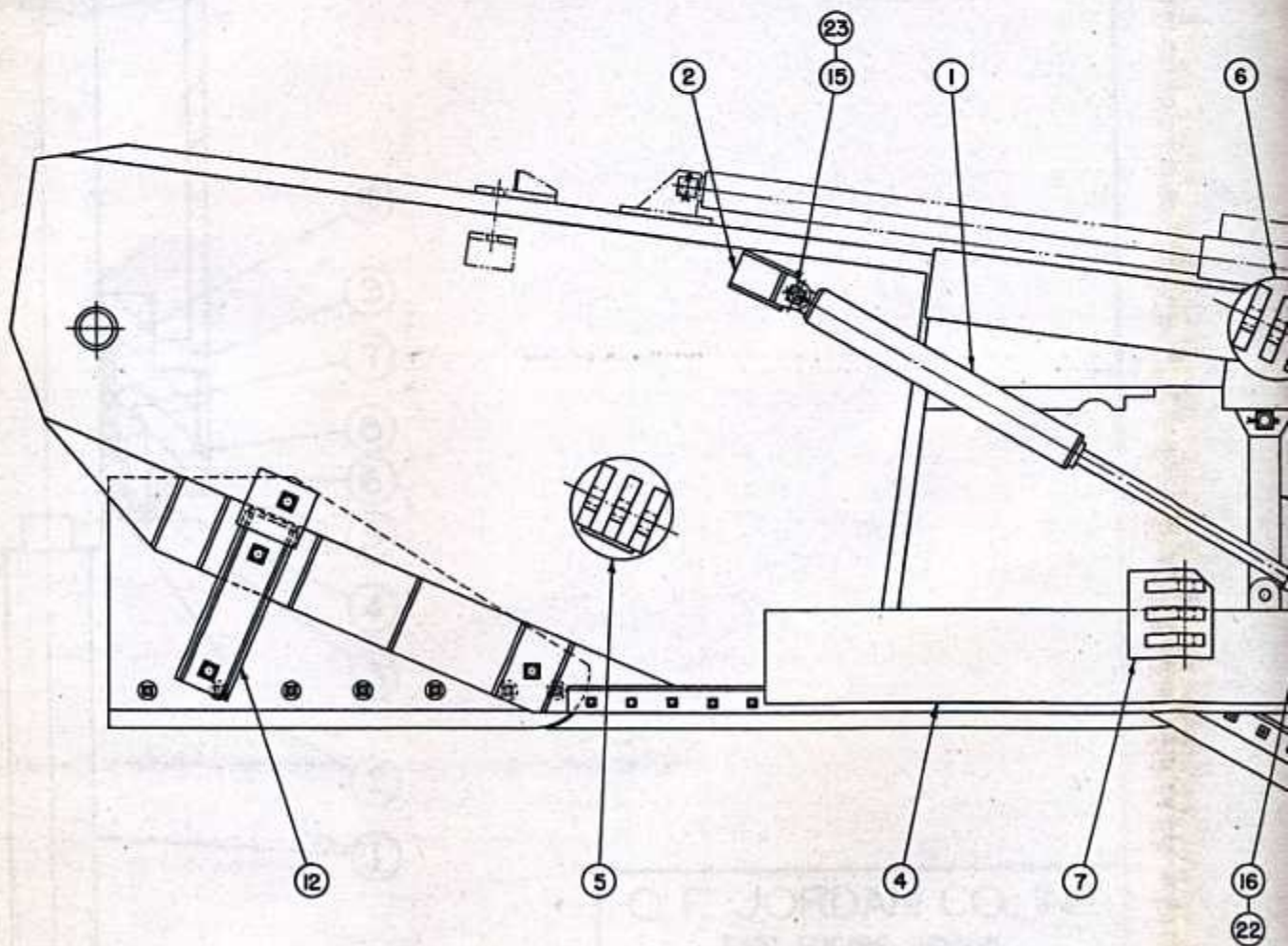
ITEM NO.	PART NUMBER	DESCRIPTION	QTY.
1	4-109-A	TEMPLATE WING PANEL I-R.H. & I-L.H.	2
2	3222	SPREADER SECTION CUTTING SHOE I-R.H. & I-L.H.	2
3	4-145	BANK SLOPER WING I-R.H. & I-L.H.	2
4	630-500	CUTTING SHOE	2
5	630-501	CUTTING SHOE	2
6	630-502	CUTTING SHOE	2
7	630-503	CUTTING SHOE I-R.H. & I-L.H.	2
8	361	HINGE	2
9	4021	ADJUSTABLE BALLAST SECTION I-R.H. & I-L.H.	2
10	4021-631	CUTTING SHOE I-R.H. & I-L.H.	2
11	4-111	DITCH SECTION I-R.H. & I-L.H.	2
12	4-111-2361-A	CUTTING SHOE (BERM END) I-R.H. & I-L.H.	2
13	4-111-2361-B	CUTTING SHOE (DITCH BOTTOM) I-R.H. & I-L.H.	2
14	4-111-2361-C	CUTTING SHOE (HINGE END) I-R.H. & I-L.H.	2
15	5001	BRACKET	2
16	4062	BANK SLOPER CYLINDER	2
17	4030	PISTON ROD COVER TUBE	2
18	4025	CROSSHEAD	2
19	4029	LIFT LINK	2
20	4028	LIFT CONNECTION I-R.H. & I-L.H.	2
21	4-109-A-8	GUSSET PLATE (OUTSIDE) I-R.H. & I-L.H.	2
22	2173	CIRCULAR GUIDE	2
23	2322	PIVOT HINGE R.H.	1
24	2323	PIVOT HINGE L.H.	1
25	5002	BRACKET I-R.H. & I-L.H.	2
26	4087	UNIVERSAL LINK	2
27	4116	BRACE CONNECTION I-R.H. & I-L.H.	2



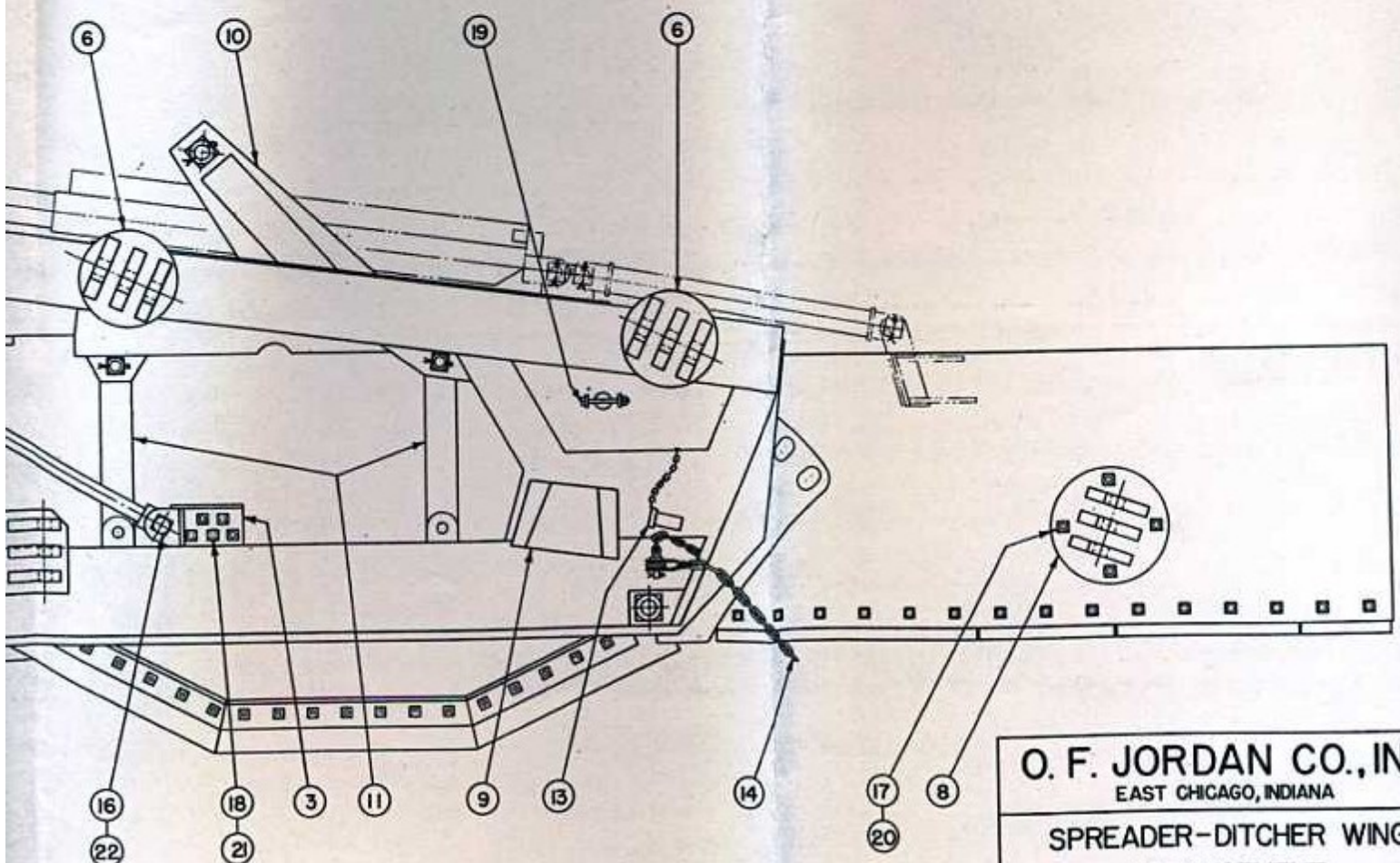
O. F. JORDAN CO., INC.
 EAST CHICAGO, INDIANA

SPREADER-DITCHER WING
 ARRANGEMENT

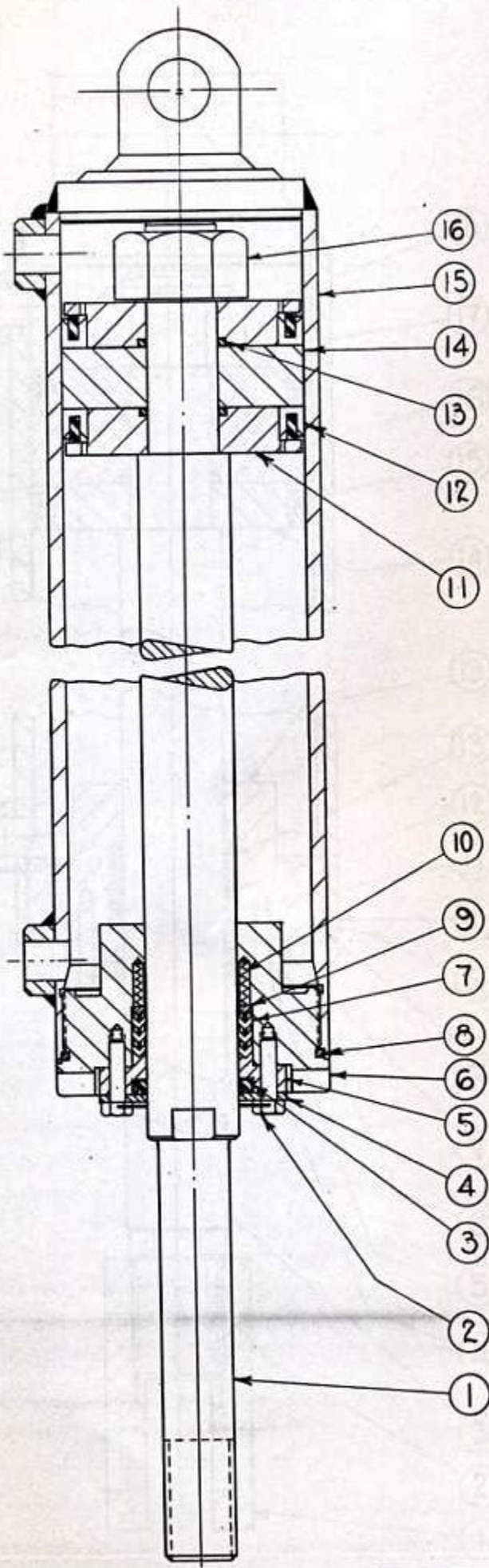
PART No. 4-161-F



ITEM NO.	PART NUMBER	DESCRIPTION	QTY.
1	4063	DITCH SECTION CYLINDER	2
2	5000	BRACKET	2
3	5003	BRACKET	2
4	4-127	WING BRACE SUPPORT	I-R.H. & I-L.H. 2
5	4002	BRACE CONNECTION	2
6	3061	BRACE CONNECTION	4
7	4006	BRACE CONNECTION	2
8	3335	BRACE CONNECTION	2
9	3181	WING REST BRACKET	2
10	4-109-A-7	GUSSET PLATE (INSIDE)	I-R.H. & I-L.H. 2
11	4-111-14	PIVOT ARMS	4
12	4023	BALLAST SECTION BRACE	I-R.H. & I-L.H. 2
13	4095	PIN & CHAIN ASSEMBLY	2
14	3458	SAFETY CHAIN ASSEMBLY	2
15	10611-B	BOLT	1 1/2" x 14" 2
16	10602	BOLT	1 1/2" x 6" 2
17	10518	BOLT	1" x 5" 4
18	10406	BOLT	3/4" x 2 1/2" 10
19	10370-A	BOLT	3/4" x 5 1/2" 2
20	11036	LOCKWASHER	1" 4
21	11032	LOCKWASHER	1" 10
22	11356	COTTER PIN	3/8" x 3" 2
23	11355	COTTER PIN	3/8" x 2 1/2" 2



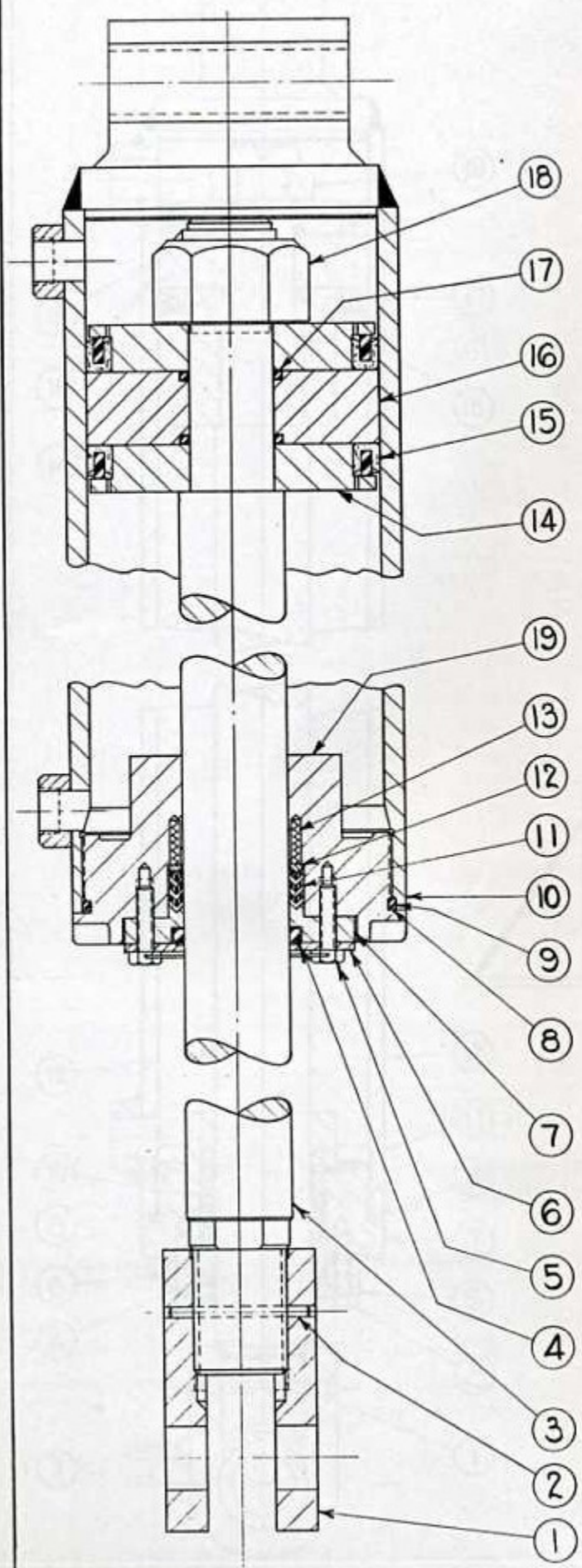
O. F. JORDAN CO., INC.
 EAST CHICAGO, INDIANA
 SPREADER-DITCHER WING
 ARRANGEMENT
 PART No. 4-161-R



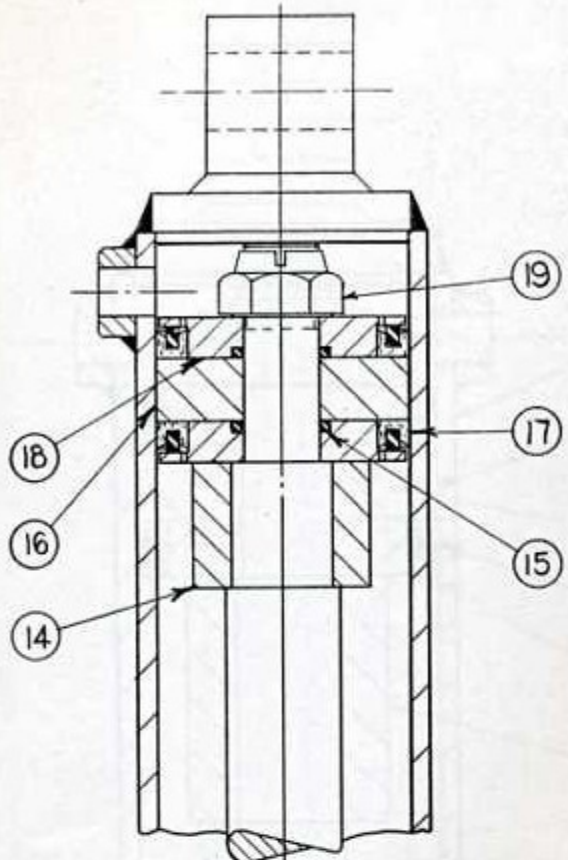
ITEM NO.	PART NO.	DESCRIPTION	QTY.
1	6223	PISTON ROD	1
2	4216	HEX. HD. CAP SCREW	3
3	1452	ROD WIPER	1
4	4898	SCRAPER	1
5	4215	GLAND NUT	1
6	4654	CYLINDER HEAD	1
7	1589-6	"V" PACKING (3 LEA. - 3 SYN.)	6
8	4384	"O" RING	1
9	1581	MALE ADAPTER	1
10	1586	SPRING	4
11	4653	BACKING PLATE	2
12	1588-1	"U" CUP	2
13	4194	"O" RING	2
14	4652	PISTON	1
15	6225	BARREL ASSEMBLY	1
16	4550	LOCKNUT 1 3/4" - 12 THD.	1

O. F. JORDAN CO., INC.
 EAST CHICAGO, INDIANA
 6" HYDRAULIC CYLINDER
 FRONT FLOW
 PART No. 4058

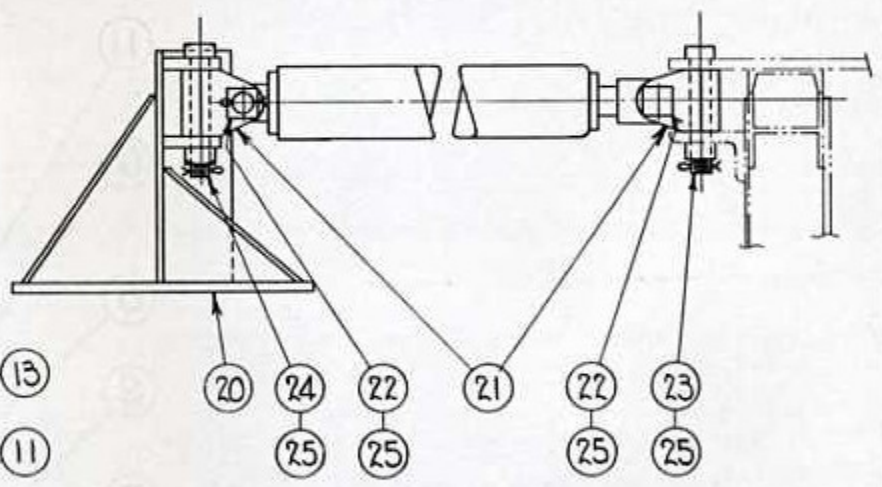
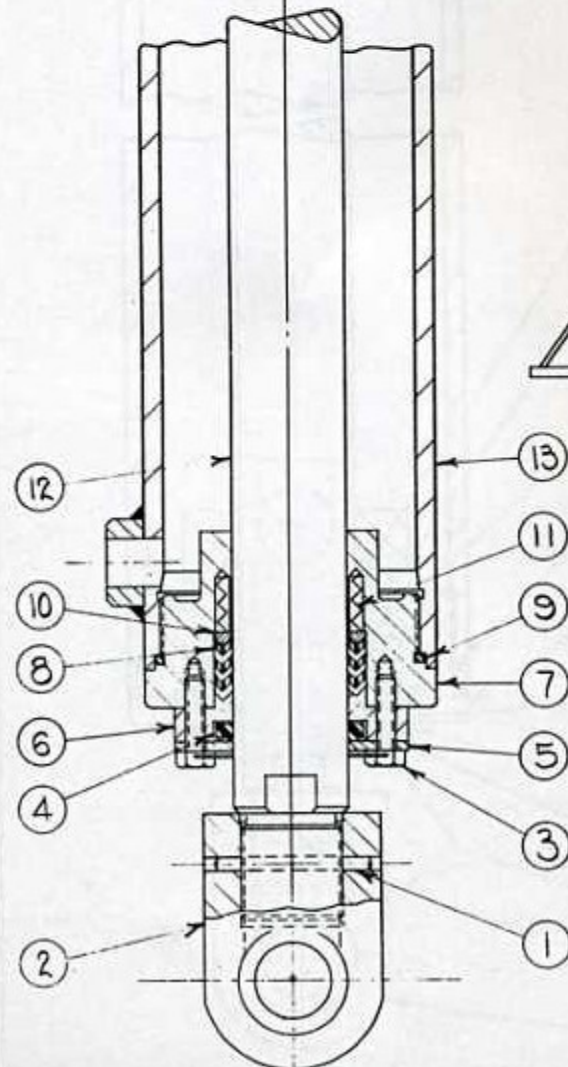
ITEM NO.	PART NO.	DESCRIPTION	QTY.
1	6233	ROD END	1
2	2682	LOCKPIN	1
3	6241	PISTON ROD	1
4	2568	ROD WIPER	1
5	4216	HEX. HD. CAP SCREW	6
6	6234	SCRAPER	1
7	6235	GLAND NUT	1
8	4298	NON-EXTRUSION RING	1
9	5333	'O' RING	1
10	6239	BARREL ASSEMBLY	1
11	2571-6	'V' PACKING (3LEA. - 3SYN)	6
12	2572	MALE ADAPTER	1
13	1586	SPRING	6
14	5329	BACKING PLATE	2
15	2137-1	'U' CUP	2
16	5327	PISTON	1
17	3749	'O' RING	2
18	5323	LOCK NUT 2-8THD	1
19	5326	CYLINDER HEAD	1



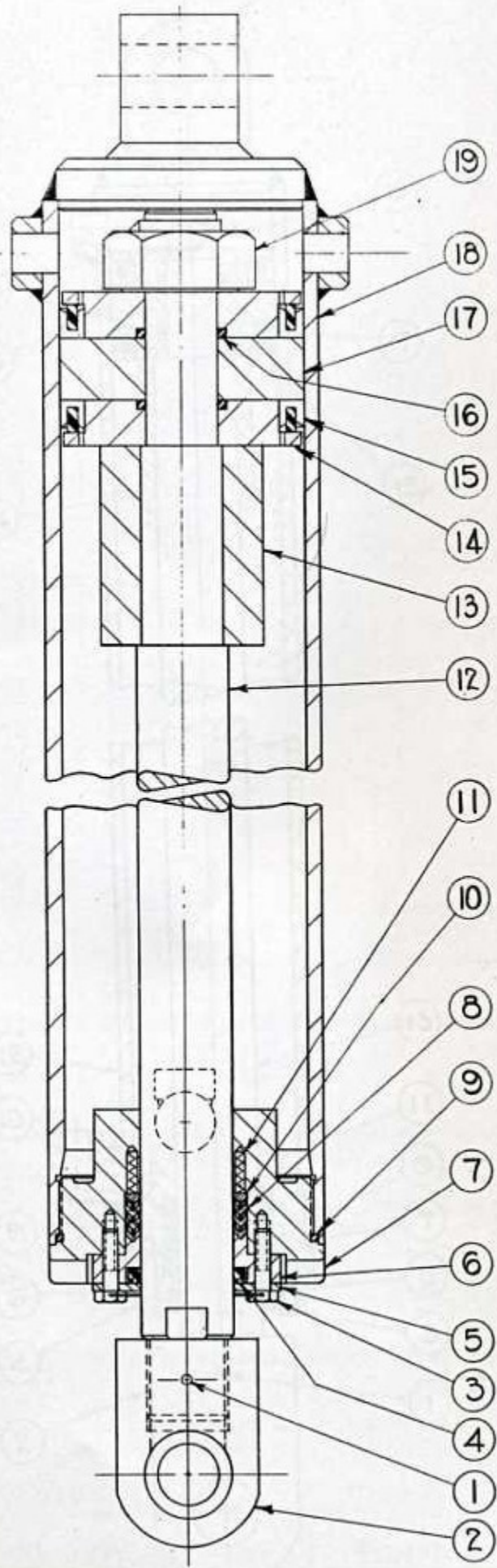
O. F. JORDAN CO., INC.
 EAST CHICAGO, INDIANA
 7" HYDRAULIC CYLINDER
 STATIONARY POST
 PART No. 4059



ITEM NO.	PART NO.	DESCRIPTION	QTY.
1	2682	LOCKPIN	1
2	5972	ROD END	1
3	4216	CAP SCREW	3
4	1452	ROD WIPER	1
5	4898	SCRAPER	1
6	4215	GLAND NUT	1
7	3205	CYLINDER HEAD	1
8	1589-6	"V" PACKING (3 LEA. - 3 SYN)	6
9	3739	"O" RING	1
10	1581	MALE ADAPTER	1
11	1586	SPRING	4
12	6227	PISTON ROD	1
13	6231	BARREL ASSEMBLY	1
14	6273	SPACER	1
15	3777	"O" RING	2
16	1127	PISTON	1
17	2867	"U" CUP	2
18	3207	BACKING PLATE	2
19	3796	LOCKNUT - 1/2" - 12 THD.	1
20	4019	FULCRUM ASSEMBLY	1
21	4087-500	UNIVERSAL LINK	2
22	10603	BOLTS - 1/2" x 6 1/2"	2
23	10606	BOLTS - 1/2" x 9"	1
24	10608	BOLTS - 1/2" x 9 1/2"	1
25	11355	COTTER PINS - 3/16" x 2 1/2"	4

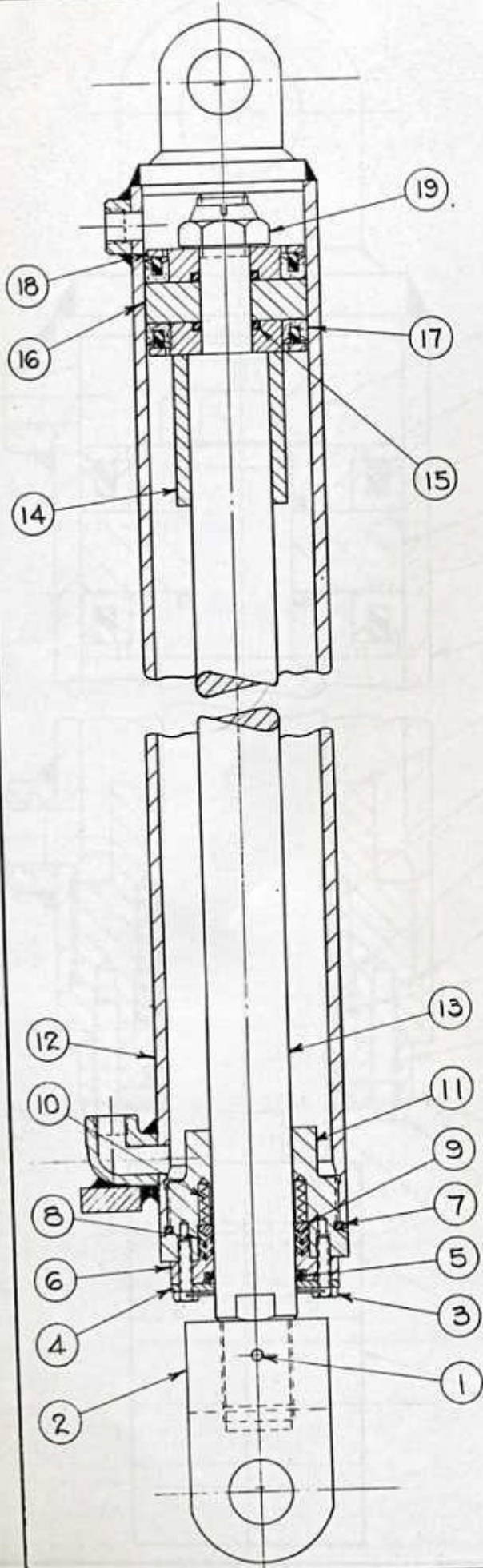


O. F. JORDAN CO. INC.
 EAST CHICAGO, INDIANA
 5" HYDRAULIC CYLINDER
 OPENING & CLOSING
 PART No. 4060



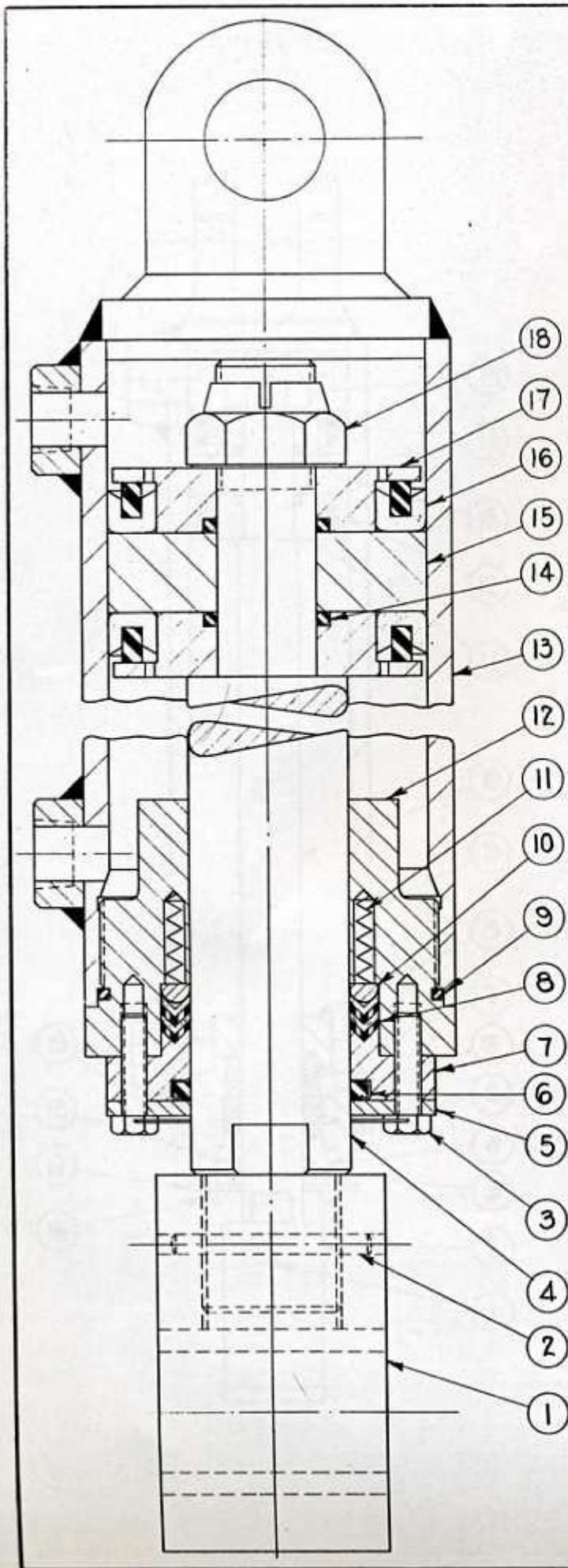
ITEM NO.	PART NO.	DESCRIPTION	QTY.
1	2706	LOCKPIN	1
2	5972	ROD END	1
3	4216	HEX. HD. CAP SCREW	3
4	1452	ROD WIPER	1
5	4898	SCRAPER	1
6	4215	GLAND NUT	1
7	4654	CYLINDER HEAD	1
8	1589-6	V PACKING (3 LEA. - 3 SYN)	6
9	4384	O RING	1
10	1581	MALE ADAPTER	1
11	1586	SPRING	4
12	5971	PISTON ROD	1
13	5970	SPACER	1
14	4653	BACKING PLATE	2
15	1588-1	U CUP	2
16	4194	O RING	2
17	4652	PISTON	1
18	6204	BARREL ASSEMBLY	1
19	4550	LOCKNUT 1 3/4 - 12 THD.	1

O F JORDAN CO., INC.
 EAST CHICAGO, INDIANA
 6" HYDRAULIC CYLINDER
 DIAGONAL BRACE
 PART No. 4061



ITEM NO.	PART NO.	DESCRIPTION	QTY.
1	2706	LOCKPIN	1
2	6039	ROD END	1
3	4880	CAP SCREW	3
4	4872	SCRAPER	1
5	1920	ROD WIPER	1
6	4879	GLAND NUT	1
7	3926	"O" RING	1
8	1135-4	"V" PACKING (2 LEA. - 2 SYN.)	4
9	1134	MALE ADAPTER	1
10	1586	SPRING	4
11	3670	CYLINDER HEAD	1
12	6221	BARREL ASSEMBLY	1
13	6038	PISTON ROD	1
14	4882	SPACER	1
15	3735	"O" RING	2
16	1077	PISTON	1
17	2795	"U" CUP	2
18	2788	BACKING PLATE	2
19	3737	LOCKNUT - 1/4 - 12 THD.	1

O. F. JORDAN CO. INC.
 EAST CHICAGO, INDIANA
 4' HYDRAULIC CYLINDER
 BANK SLOPER
 PART No. 4062



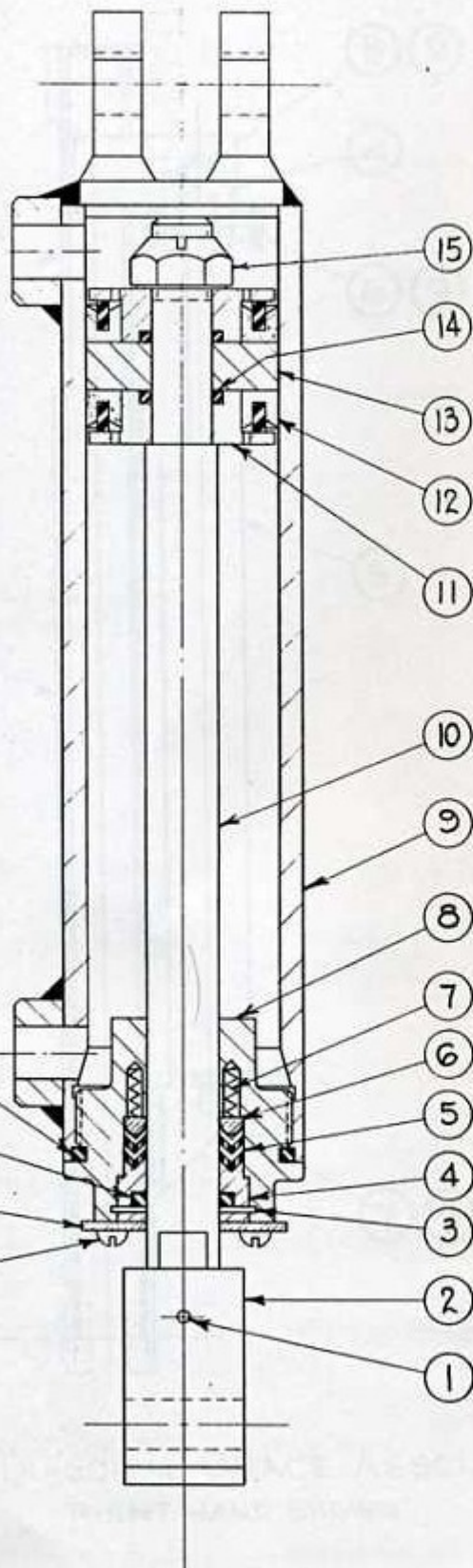
ITEM NO.	PART NO.	DESCRIPTION	QTY.
1	6027	ROD END	1
2	2706	LOCKPIN	1
3	4880	CAP SCREW	3
4	6037	PISTON ROD	1
5	4872	SCRAPER	1
6	1920	ROD WIPER	1
7	4879	GLAND NUT	1
8	1135-4	"V" PACKING (2-LEA. - 2-SYN.)	4
9	3926	"O" RING	1
10	1134	MALE ADAPTER	1
11	1586	SPRING	4
12	3670	CYLINDER HEAD	1
13	6219	BARREL ASSEMBLY	1
14	3735	"O" RING	2
15	1077	PISTON	1
16	2795	"U" CUP	2
17	2788	BACKING PLATE	2
18	3737	LOCKNUT - 1/4" - 12 THD.	1

O. F. JORDAN CO. INC.

EAST CHICAGO, INDIANA

4" HYDRAULIC CYLINDER
DITCH SECTION

PART No. 4063



ITEM NO.	PART NO.	DESCRIPTION	QTY.
1	3864	LOCKPIN	1
2	6272	ROD END	1
3	2119	SNAP RING	1
4	2108	GLAND NUT	1
5	1388-4	"V" PACKING (2LEA. - 2SYN.)	4
6	1381	MALE ADAPTER	1
7	1927	SPRING	3
8	4859	CYLINDER HEAD	1
9	4865	BARREL ASSEMBLY	1
10	6254	PISTON ROD	1
11	2975	BACKING PLATE	2
12	2865	"U" CUP	2
13	2116	PISTON	1
14	3748	"O" RING	2
15	3747	LOCKNUT - 5/8" - 18 THD.	1
16	4858	RD. HD. MACHINE SCREW	3
17	4860	SCRAPER	1
18	2118	ROD WIPER	1
19	3749	"O" RING	1

NOTES:
 WHEN ORDERING FOR REPLACEMENT
 SPECIFY THE PART NUMBER
 AND THE QUANTITY REQUIRED.

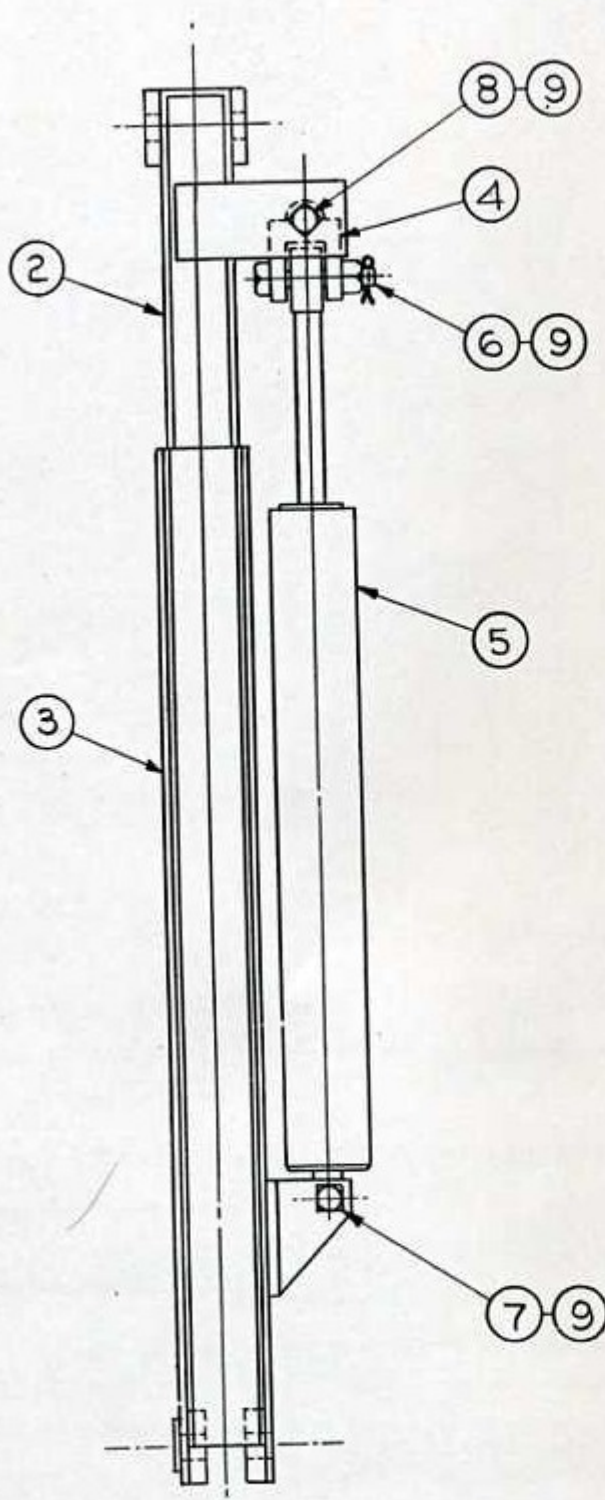
O. F. JORDAN CO. INC.

EAST CHICAGO, INDIANA

2" HYDRAULIC CYLINDER
 BRACE LOCKS

PART No. 4066

ITEM NO.	PART NO	DESCRIPTION	QTY.
1	4090-A	DIAGONAL BRACE ASS'Y. 1 ^{RH} 1 ^{LH}	2
2	4091	INNER BRACE ASS'Y.	2
3	4092	OUTER BRACE ASS'Y. 1 ^{RH} 1 ^{LH}	2
4	4087	UNIVERSAL LINK (VAR.501)	2
5	4061	6" HYD. CYLINDER	2
6	10600	BOLT 1/2 x 7"	2
7	10604	BOLT 1/2 x 7 1/2"	2
8	10611	BOLT 1/2 x 11 1/2"	2
9	11355	COTTER PIN 3/8 x 2 1/2	6



NOTE:

WHEN ORDERING PARTS ALWAYS SPECIFY MFG'ERS. CAR SERIAL No. AND ALSO SPECIFY IF R.H. (RIGHT HAND) OR L.H. (LEFT HAND) IS REQ'D.

① DIAGONAL BRACE ASSEMBLY
RIGHT HAND SHOWN

O.F. JORDAN CO., INC. EAST CHICAGO, INDIANA
DIAGONAL BRACE ASSEM.
PART No. 4090