



February 2019

Volume 12, Number 2

Sunrise Division Officers

Superintendent..... Stewart Jones
 Asst. Superintendent..... Bob Rothgery
 Secretary..... Larry Stephens
 Treasurer..... Rich Flammini
 Program Chair..... Gary Myers
 Division AP Chair..... Bob Rothgery
 Youth Coordinator..... Ernee Edwards
 Education Chair..... Stewart Jones
 Modular Layout Chair..... Don Francis
 Editor Herald..... Larry Stephens
 Web Site... <http://trainweb.org/SunriseDivision>

In the Herald

| | |
|--|---|
| Next Meeting..... | 1 |
| Upcoming Clinics for 2019..... | 1 |
| Upcoming Tool Times for 2019..... | 1 |
| Upcoming Show 'n Tell Themes for 2019..... | 1 |
| Meeting Notes..... | 2 |
| Clinic..... | 2 |
| Swap Table..... | 2 |
| I'm Not Cheap, I'm Frugal..... | 2 |
| Tool Time..... | 2 |
| Yard Master..... | 2 |
| Show & Tell..... | 3 |
| Upcoming Events..... | 3 |
| From the Editor..... | 4 |
| URL of the Month..... | 4 |
| Modules..... | 4 |
| Trackside..... | 5 |

Next Meeting

Our next Division meeting will be Thursday, March 7, 2019, at Holy Love Lutheran Church, South Chambers Road at 7 PM. **Note new time.**

Upcoming Clinic for 2019

March - Sectional Layout Slideshow

Dick Hunter

Building the D&RG Narrow

Gauge-Mill, Yard, River, and Town
 Scenery

April - 4th Annual Sunrise Division Model

Railroad Auction - Rich Flammini

May and after TBD – OPEN

Upcoming Tool Times for 2019

March - Woodland Scenics wheel cleaning unit
 - Rich Flammini.

April - Micro Brushes, Pipe Cleaners and
 Cotton Swaps - Larry Stephens

May - and after TBD - OPEN

Upcoming Show 'n' Tell Themes for 2019

March - 1st Scratch Built Item

April - Model/Prototype Photo

May - Your Favorite Railroad

June - Non-RR Hobby Item

July - Cancelled for Convention

August – Scratch Built Structure

September – Kit Built Structure

October - Scratch Built Car

November - Railfan Photos

December - Old Time Item

February Meeting Notes

Stu called the meeting to order. We introduced ourselves. As the Show and Tell was the subject on Era we gave our reasons why we model a particular period. The reasons range from a desire to do a particular year in the early days of railroading to modern times.

Stu handed out a signup sheet to do clinics at the upcoming TCA train show.

Rich gave the treasury report showing we had \$1,261.90 at the beginning of the year. The treasury now has over \$1,600. The swap table from the TCA show netted \$99.25. Each year the Sunrise donates money to the Holy Love Lutheran Church for use of this room. Sunrise donates \$100 and, with contributions from members, they received a total of \$437. Many thanks to the members who contributed.

On the swap table were two books, a beginning of a lending library. If you have a train book that you no longer need and you feel it might be of interest to fellow members, bring them to the next meeting.

There was a discussion on reimbursing the person who hauls the module trailer to shows. Don stated that his cost of gas to the Loveland train show was \$70+ dollars. A motion was passed that on out of town shows the driver will be reimbursed for gas expenses from the treasury. There was some discussion on modular monies and Sunrise monies. Both have been in one pot so long that there is no accounting of the origin of the monies. It appears that the bulk of the monies come from the swap table and from TCA for showing the modules and clinics.

Clinic

Building the D&RG Narrow Gauge--Basement Finishing, Backdrops & Bench Work

A video was presented showing the progression of measuring and leveling out the line for the bench work, construction of the bench work and layout of the track. A good portion of the video showed the building of a round house from scratch. One wall was made from styrene. Then a mold was made so the rest of the walls could be constructed from the castings. Interior beams were laid out inside the round house. Then the roof for the roundhouse was built in place. Like all layouts being built, there were some track problems. Some rework of the river and bench work needed to be done.

The Swap Table

There was a nice selection of items on the swap table. At the end of the meeting a nice showing of green grew in the kitty jar.

Reminder--instead of one person being in charge of the swap table, it is a "you bring it, you take it back" if your items do not sell.

I'm Not Cheap, I'm Frugal

Here's one from Ken Cruise

I receive the Micro Mark Catalogue every month. I mark the must have items and wait for the summer catalogue. This catalogue lists the discount sale prices for most items. That is when I buy the must have items.

Tool Time

RIP Track Video

A short video was presented showing an RIP track in operation on a layout. It showed a bad ore car being brought in for repair and the safety steps needed to protect the work crew. A blue marker is placed on the track to protect workers.

Yard Master

No items this month

Show and Tell

The theme: "Era – Representative of a time."
There were six displays.



Gary Myers displayed eight Rio Grande cabooses each from a different era. Left to right are 1923, 1939, 1940, 1945, 1960, 1965, 1970 and 1975.



Stewart Jones displayed four passenger cars from different eras. From back to front is (1) a silk express car built in 1890 to move silk from the west coast port to the eastern markets (2) WW2 Troop car (3) 1910-1920 steel baggage car (4) 1950 Budd streamlined baggage car.

Rich Flammini displayed a photo from 1948. A Milwaukee road DL-109 A1A-A1A Diesel.

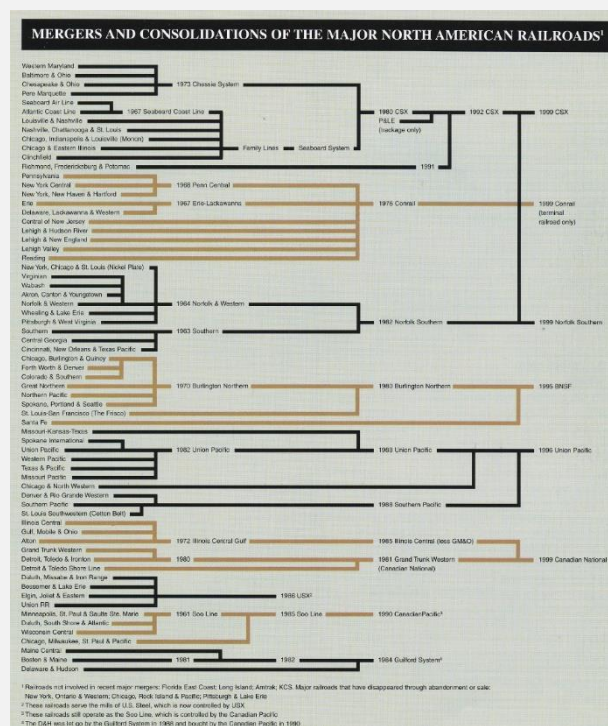


Bob Rothgery displayed two Jordan Products, a standard delivery wagon, and a light delivery wagon.

Dick Hunter displayed this cartoon.



Larry Stephens displayed a chart showing that there were about 60 railroads in existence at the beginning of the century. Today these railroads are now 9.



Upcoming Events

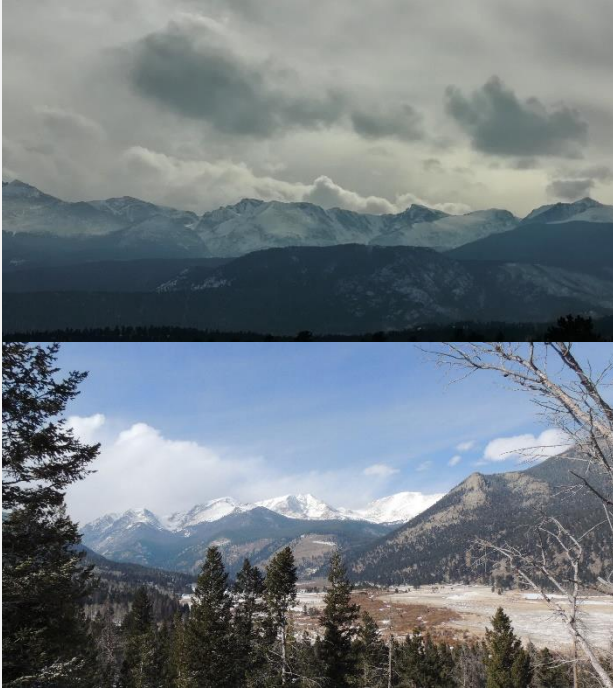
Mar 2-3 -- Sat 10-5, Sun 10-4
Rocky Mountain Toy Train Show
Denver Mart, 451 E. 58th Ave, Denver, CO.
\$10/Adult, under 12 & Active Military free.

March 16 -- Sat 9AM to 11:30AM
Model RR & Toy Train Swap Meet
Green Mountain Presbyterian Church
12900 W. Alameda Pkwy, Lakewood, CO

April 13-14 -- 10AM to 5PM Sat; 10AM to 3PM Sun
Train Expo Colorado
Chapel Hills Mall Event Center
1710 Briargate Blvd, Colorado Springs, CO
\$6/person, \$9/Family of two or more, under 12 free. \$1 Discount for Seniors or Military

From the Editor

I attended the Rails in the Rockies Train Show event developed and hosted by the Estes Valley Model Railroaders in Estes Park. For a club that has about 60 members they put up a darn good show. More information under modules. Monday was cold but sunny with no wind so the wife and I went downtown to do a little shopping. Then we went on to the Rocky Mountain Park. It is even beautiful in the Winter.



My email: jeepnman@ecentral.com

URL of the Month

We have 3 live cams from Steve. They are sometimes off line.

<https://www.youtube.com/watch?v=K421JkBAqv4>
<https://www.youtube.com/watch?v=zfZmvLWqyWk>
<https://www.youtube.com/watch?v=0NoXhQxfX2k>

Usually I only post two to three URLs but as the Tool Time was about RIP track, here are videos about RIP as done in place. The first one is the most interesting as it is done in first person. The second one, not so, is posted for the AC6000 buffs out there.

<https://www.youtube.com/watch?v=h6SAnp5V8sc>
https://www.youtube.com/watch?v=V_gqoZFZmvs

Modules

We set up the Modules at the Estes Park Train Show on February 15. Don, William and I stayed the weekend to show the modules. Rich came to help set up. Thanks Rich.

The weather, despite being cold, did not seem to deter attendance. The Estes crowd seemed to take this cold in stride. Saturday and Sunday we only had a few derailments due to the bridge falling off in the trailer. A temporary repair was made. Fortunately, we had a tooth pick on hand. The 3 of us took down the modules on Sunday evening. By time we had our 14 modules ready to load up we were spent.

As we began the hard part of loading up the modules into the trailer, I noticed my wife was sitting and knitting at one of the lunchroom tables talking to another woman. I had assumed that they were talking about knitting, but that wasn't all they were talking about. As it turned out, the woman was actually Laura Trump, President of the Estes Valley Model railroaders. My wife, seeing we were exhausted and ready to give out, asked Ms. Trump if she could have some of her staff assist us in loading our trailer, which they graciously and efficiently did. My wife even helped move our smaller items and boxes via a small wagon. Many thanks to those who helped us get through this difficult part of the show, especially thanks to Laura Trump and her staff.

I would like to take this time to invite all Division members to come to the March 2 and 3 TCA Train Show to see for yourself the Sunrise Division modules in operation. They are near completion, but more ground cover, vehicles and people need be placed. More roadwork needs to be done and more detail added to make the layout come alive. We definitely NEED more members to be part of the Module Group to help set up and tear down, run trains and promote the hobby to the visitors who come to see the Division modules. We could also use help to finish up the modules. As soon as the weather becomes warmer we will start working on Saturdays. You don't need to be there every Saturday, just show up when you can.

Track Side



Photos

Photos by Larry Stephens
Ames Monument

The Ames Monument is a large pyramid in Albany County, Wyoming, designed by Henry Hobson Richardson and dedicated to brothers Oakes Ames and Oliver Ames, Jr., Union Pacific Railroad financiers. The brothers garnered credit for connecting the nation by rail upon completion of the United States' First Transcontinental Railroad in 1869. Oakes, a U.S. representative to the United States Congress from Massachusetts, asserted near total control of its construction, whereas Oliver became president of the Union Pacific Railroad (1866 - 1871).

Monumental Task
Norcross Brothers of Worcester, Massachusetts were contracted to build the Monument at a cost of \$65,000. Construction took place between 1880-1882 using granite that was quarried from Reeds Rock, located a half-mile west of the Monument. During the project, construction superintendent A. L. Southerland and 85 workers lived on-site in the town of Sherman. Draft animals were used to skid the mammoth stones, which weigh up to 20 tons apiece, from the quarry. Wooden cranes were used to hoist the large stones into place.



