

Sunrise Division Officers

Superintendent.....	William Boorman
Asst. Superintendent.....	Dennis Hagen
Secretary.....	Bob Hochstetter
Treasurer.....	Rich Flammini
Program Chair.....	Gary Myers
Division AP Chair.....	Bob Rothgery
Youth Coordinator.....	Ernee Edwards
Education Chair.....	Stewart Jones
Modular Layout Chair.....	Larry Stephens
Herald Editor.....	Bob Hochstetter



In the Herald

Layout of the Month.....	1
From the Editor.....	2
January Meeting Notes.....	2
Next Meeting.....	2
URL of the Month.....	2
Upcoming Clinic.....	2
Upcoming Tool Time.....	2
Upcoming Show 'n' Tell Theme for 2022	2
Announcements.....	2
Show 'n' Tell.....	3-4
Tool Time.....	4-6
Clinic.....	6-9
Annual Financial Report.....	9
Coming Events.....	10
Module Report.....	11



Layout of the Month

This month's photographs are from Dave Cochrun and Kathy Sparks' Castle Rock and Pacific layout.



From the Editor

By the time that you read this, we will be starting into the third year of the COVID-19 pandemic (from Greek, *pan-* meaning all and *demos* meaning people) or, as we are now hearing, the COVID-19 endemic (from Greek *endemos* meaning dwelling in a place). And, whatever happened to epidemic, anyway (from Greek *epi-* meaning among and *demos* meaning people). Whatever it is called, I am sure that we are all tired of it.

We continue to have monthly hybrid Division meetings but they seem to lack something. When you say hello to someone but all you can see are their eyes and a mask, do you sometimes not even recognize who they are? I do. And when you cannot make out what they are saying because of a mask are you tired of saying “Could you repeat that, please”? I am. And when the people who are forced to attend by Zoom cannot even see who is speaking, do you feel for them? I do. Or when they cannot hear what is said at the meeting? I do. Let us hope and pray that at some future time we can return to seeing people’s faces and understanding their speech and resume the feeling of community that we once had.

Bob

January Meeting Notes

Signing in to the hybrid meeting began about 6:45 p.m. on January 6, 2022. The meeting began at 7:05 p.m. with 14 participants in attendance at the church and 5 attending via Zoom. The meeting began with Announcements followed by Tool Time, Show ‘n’ Tell, and the Clinic, all of which are reported on in greater detail in this edition. The meeting concluded at 8:45 p.m.

Next Meeting

The next meeting will be Thursday, February 3, 2022 in person at Holy Love Lutheran Church, 4210 S Chambers Road, Aurora, Colorado. Mask wearing is required for all attendees. The meeting will start at 7:00 p.m. The meeting will also be streamed on Zoom.

URL of the Month

<https://www.youtube.com/watch?v=BJr6ntPQVUw>
Winter Trains 2022, Snow Covered Trains!
Monster Size Train Over 200 Cars, CP Chase and Snow Action!

Upcoming Clinic

Coking and D&RGW 3rd Division Mining Operations—Gary Myers

Upcoming Tool Time

TBD

Upcoming Show ‘n’ Tell Themes for 2022

February-Diesel
March-1930’s Era
April-April Fools
May-Kitbash Project
June-1940’s Era
July-Prototype Project
August-1970’s Era
September-Mining
October-Steam
November-2000’s Era
December-Holiday Theme

Announcements

In an attempt to reduce problems, we continue to ask that Show ‘n’ Tell photos, clinic presentations, and Tool Time photos be taken before the meeting and sent to Gary Myers (garymyers06@comcast.net) for presentation at the meeting and to me for inclusion in the Sunrise Herald (rlhoch422@gmail.com).

Rocky Mountain Train Show, April 2nd and 3rd at the National Western Complex. This show will be co-sponsored by the Rocky Mountain Region of the NMRA.

Sunrise Division Modules—the modules are in good shape. The trailer’s axle needs to be replaced and a new axle has been ordered.

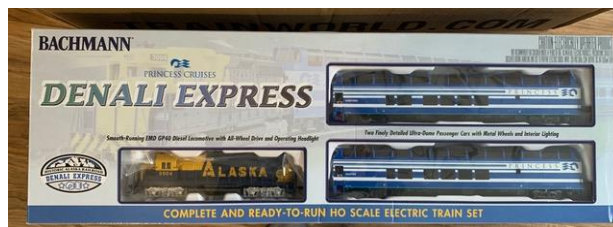
Rich Flammini announced that he stepping down from the Treasurer's position. Dave Clifford will assume the position on March 1·2022.

The Foothills Society of Model Railroaders swap meets have resumed at Green Mountain Presbyterian Church, 12900 W. Alameda Pkwy, Lakewood, CO

Show 'n' Tell

January's Show 'n' Tell subject was Christmas Present.

Adam Crews showed this Denali Express train. He explained that this is a present that he bought for himself. It was a newly released Bachmann set by Princess Cruises. The set included a GP40, and two Colorado railcars. The two passenger cars, Hunter and Sanford, he had already. He added Blackburn for the photos below. Sadly its only DC current and he is looking for an Alaska SD70MAC.



Adam also showed this H. Hargrove print that was given to him by a good friend and one of his regular airport passengers.



Rich Flammini showed this Port Huron, Michigan house. Rich said "There were a lot of rumors when this grand house was being built. Many thought it was for the president of the Grand Trunk railroad. But it turns out that it belongs to Rich's wealthy uncle who owns the roofing business in town."

It is a Woodland Scenics prebuilt model and includes one of their Just Plug lights. The only modification that Rich made was changing the straw colored roofing to a light brown since he thought a "straw" roof in central Michigan was out of place.



Rich's layout.

William Boorman showed a photo of a LEGO Cat D11T bulldozer. He has the kit but his 10"x22" model is not yet assembled.



Tool Time

Gary Myers gave this Tool Time presentation.

Rich also showed this Grand Trunk Western boxcar kit.



This is a Blue Box (Athearn) boxcar that came from Rich's Secret Santa, a fellow Sunrise member. Dave Clifford knows that Rich is a Grand Trunk railroad guy and also knows that everything on the layout should be dated June of 1960 or earlier. In one of Dave's eBay excursions he found #516796 in the appropriate Maple Leaf logo with a build date of 11/57. Thanks to his sharp eye, it will soon grace

Tool Time



CONIFER TREE MAKING TOOLS

All the Tools you Need You Probably Have

All the Materials you Need are Inexpensive

Tool Time CONIFER TREE MAKING TOOLS



VISE (Anchor)

Eyebolt/Hook (Wood Block)

Tool Time
CONIFER TREE MAKING TOOLS



Drill (Variable Speed)

Pliers (Wire Cutters)

Tool Time
CONIFER TREE MAKING TOOLS



Wire

- Loop through eyebolt
- Two ends in drill chuck
- Make a few drill turns

Twine Rope

- Load 2" – 3" strands
- Spread strands
- Load up wire between drill and vise

Variable Speed Drill

- Turn wire in Drill carefully

Tool Time
CONIFER TREE MAKING TOOLS



Wire Strippers

Wire

- Thermostat Wire
- 5 Strands
- 16-18 guage
- Cut to 4' lengths
- Strip wire

Tool Time
CONIFER TREE MAKING TOOLS



Spray Paints

- Browns / Grays

Wire Cutter

- Cut into desired tree lengths

Scissors

- Trim strands to shape

Tool Time
CONIFER TREE MAKING TOOLS



Scissors

Twine Rope

- Cut 2" – 3" lengths
- Separate strands

Tool Time
CONIFER TREE MAKING TOOLS



Hair Spray

- Spray Painted Tree
- Roll in bowl of ground foam or sprinkle foam over tree (photos not shown)

Photo not Available



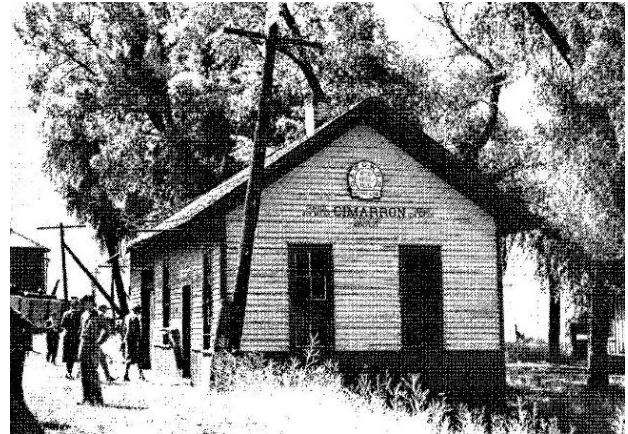
Dull-Cote

- Touch up “foamed” trees

Plant Trees

- As desired

Photo not Available

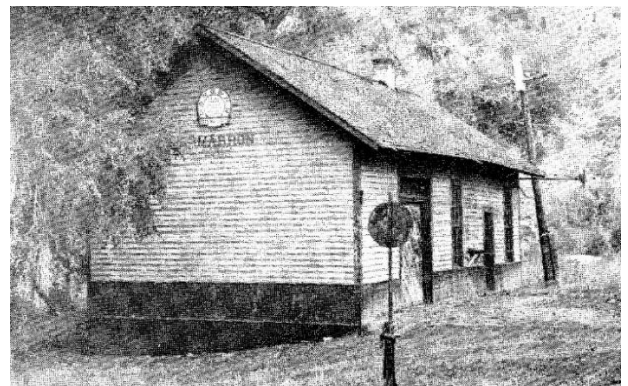


TOOLS

- Variable Speed Drill
- Wire Strippers
- Pliers
- Scissors
- Vise
- Wood Block - Eye Bolt/Hook

MATERIALS

- Thermostat Wire
- Twine Rope
- Spray Paints
- Hair Spray
- Ground Foams
- Dull/Clear Coat



Clinic

Stu Jones presented this clinic on building a model of the Cimarron depot.

“This project was to model the Cimarron, Colorado Depot. Cimarron is approximately where the D&RGW narrow gauge railroad exited the Gunnison River between Gunnison and Montrose just before the river enters the Black Canyon. Cimarron is only a wide spot on Highway 50 today and all of the railroad structures have disappeared. Therefore, it is necessary to work from photos:

First it was necessary to make drawings. Because there is no direct frontal view of the depot, I made measurements of the windows and doors from both photos, then averaged the dimensions to compensate for differences due to perspective. Originally I had no photo of the rear of the building so I didn’t know if there were windows there. Since I had only four window castings (Tichy #8030), I opted to add windows only to the front and east sides.

I first cut the front, back and two sides from Northeastern wood siding material and the lower vertical from Evergreen plastic siding:



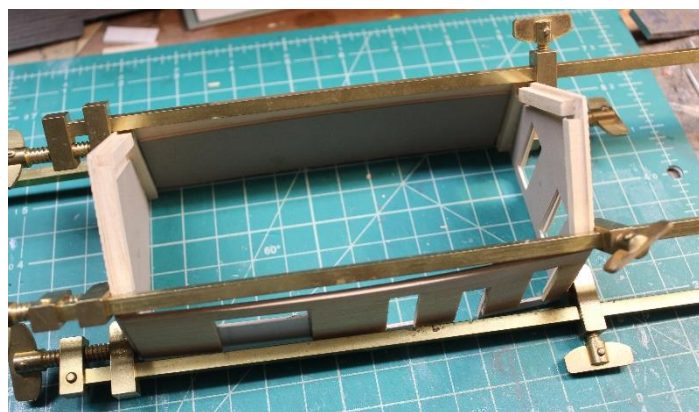
Because I was joining two dissimilar materials, I braced the interior with matboard after cutting out the door and window openings on the matboard. I cemented the wood siding and the matboard together with contact cement, clamping everything together so that they would remain flat. Next, I sealed all parts with sanding sealer, inside and out, to prevent warping when the parts were painted:



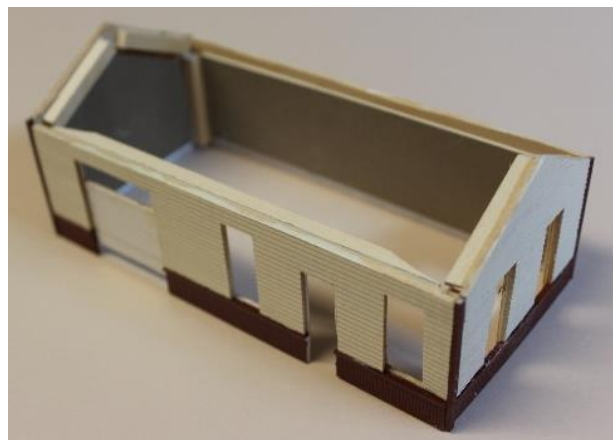
I then added corner and roof bracing using 3/16-inch basswood:



When the corner bracing glue was firmly set, I glued the sides and ends together and clamped them with bar clamps making sure that the assembly was square:



I now painted the structure with an approximate depot buff and the wood trim windows and doors with oxide red. The problem with choosing colors from black and white photos became apparent. Apparently the trim color should have been brown. Only later the Rio Grande began painting their structures yellow (or Rio Grande gold) and oxide red.



Next I made the roof panels. Again, I used matboard rather than plastic, because I wanted to glue shingles onto it. To avoid warping, I

glued smaller rectangles (that would fit inside the structure back-to-back) to the underside of the roof panels. Back-to-back would also counteract warping. I sprayed the roof panels with sanding sealer. I then drew a series of parallel lines along the length of the roof panels to aid in locating shingles strips, then glued shingled strips following the guild lines. I painted the shingles dark red.



When the roof panels were completed, I attached the roof to the structure using rubber bands to hold the roof in place.



Although roof joists were not apparent in the photos, I decided to add them. This would probably be necessary if this were to be a contest model. I cut the joist ends from 0.020" x .060" Evergreen strips. Instead of trying to apply the ends of the joists individually to the undersides of the roof overhand, I cemented them to a thin strip of Evergreen strip. This ensured even spacing and right angles to the strip. I painted the finished assemblies and attached them to the roof undersides.



When the roof assembly was securely dried, I applied the crown shingles to the roof and added a chimney to the center of the roof. The chimney was made from a 1/4-inch square Evergreen tube with plastic brick siding cemented over it. I added roof fascia boards from stripwood and painted them red. The final touch was to add the D&RGW logo and station printing to the ends of the depot. I prepared masters using a CAD program, then had them commercially printed on a MicroMark decal sheet. I applied the decals to the depot."



DENVER
329 MILES

CIMARRON
ELEVATION
6826 FEET

OGDEN
424 MILES



Annual Financial Report

Sunrise Division 2021 Financial Report

"The year basically had two parts. Through most of the year, we were limited to Zoom meetings with virtually no real live interactions. Consequently, there was little financial activity. Then things opened slightly and we had some "normal" activity. Our bank account had a balance of \$2,163.93 on January 1 2021. We closed the year with \$2,238.25. \$175 was an initial cash donation to be contributed to Holy Love church in January of this year resulting in an actual balance of \$2,063.25, a 2021 year end decline of \$100.68. There are two 2021 transactions that are not reflected in the above but I believe will be offsetting and will likely not change the above and will be entered in 2022. We will make our \$100 contribution to Holy Love church, an expense but we anticipate receiving \$100 from the TCA for our modular layout display at their Fall show, income. Thanks to your generosity including checks made out to the church and additions made at the January meeting, a donation of \$320 is being made this month to Holy Love plus the \$100 Division contribution bringing the total donation to \$420. This will be my last financial report to the membership. You elected me to the Treasurer position in 2015 and I appreciate the trust you have placed in me during the past 7 years. I'm confident that Dave Clifford who is succeeding me will carry the Division "purse" in a very responsible manner."

Thanks, Rich Flammini 1/7/22



Layout and Design Operations Weekend 2022

March 18th, 19th, and 20th

Presented by:

The Indian Nations Division of the NMRA

*Three operating sessions. Choose from 16
great layouts -
Friday and Saturday Evenings and Sunday
Morning*

**Guest speakers on Saturday from 8:15
a.m. to 4:00 p.m.**

**Doug Tagsold, Rich Gibson, Eric
Hansmann, and Richard Frazier**

Registration and sign in from 7:30 to
8:00 a.m. at the Akdar Shrine Center

Catered Lunch will be Served

Track plan consulting available during the
lunch period.

Visit

<https://tulsanmra.org> for more
information and signup.

Registration Fee: \$40.00 (No change
since 2017!)

**Akdar Shrine Center
2808 S Sheridan Road, Tulsa, OK
74129**



**LAYOUT DESIGN AND
OPERATIONS WEEKEND
TULSA, OK**

Module Report

Larry Stephens sent this report on the repair work that was done on the modules.

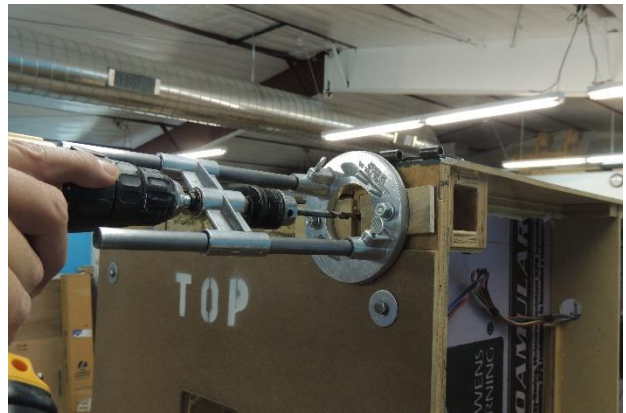
One module had a broken corner which required a Rube Goldberg looking arrangement of clamps.



To reinforce the leg pockets, glue is first applied to the inside of each pocket in the bottom inch.



A 1½"x1½"x1" block of wood is inserted and is driven in a precise distance.



Two 1/4" holes are drilled into the leg pocket through the block of wood that was inserted into the pocket to hold two dowels.



A homemade clamp (eight of them, four on the top and four on the bottom) is used to hold a 1x2 block of wood to the module frame and the foam base of the module.