

November 2022 Volume 15 Number 11

Sunrise Division Officers

Superintendent.....William Boorman
 Asst. Superintendent.....Dennis Hagen
 Secretary.....Bob Hochstetter
 Treasurer.....Dave Clifford
 Program Chair.....Gary Myers
 Division AP Chair.....Grant Harrison
 Youth Coordinator.....Position open
 Education Chair.....Stewart Jones
 Modular Layout Chair.....Larry Stephens
 Herald Editor.....Bob Hochstetter



In the Herald

Layout of the Month.....1
 November Meeting Notes.....2
 Next Meeting.....2
 Video of the Month.....2
 Upcoming Tool Time.....2
 Upcoming Clinic.....2
 Upcoming Show 'n' Tell Themes for 2022.....2
 Announcements.....2
 Module Update.....3
 Tool Time.....3
 Show 'n' Tell.....3
 Clinic.....3-11



Layout of the Month

This month's photographs are from Tom Wilcox's G scale layout. They were taken by Gary Myers during the August 6, 2022 Sunrise Division layout mini-tour.



October Meeting Notes

Signing in to the hybrid meeting began about 6:45 p.m. on November 3, 2022. The meeting began at 7:05 p.m. with 17 participants in attendance at the church and 2 attending via Zoom. The meeting began with introductions and election of Division officers. All of the current officers were re-elected for another year. Announcements, Tool Time, Show 'n' Tell, and the Clinic followed, all of which are reported on in greater detail in this edition. The meeting concluded at 9:15 p.m.

Next Meeting

The next meeting will be Thursday, December 1, 2022 in person at Holy Love Lutheran Church, 4210 S Chambers Road, Aurora, Colorado. Mask wearing is optional for all attendees. The meeting will start at 7:00 p.m. The meeting will also be streamed on Zoom with sign-in between 6:30 and 7:00.

Video of the Month

This month's featured YouTube video is of the Welsh Highland Railway from 2020.
<https://www.youtube.com/watch?v=pT0mKjwTXUw>

Upcoming Tool Time

Tools for Christmas - Gary Myers

Upcoming Clinics

Dec 2022 - Scenery - Stu Jones
Jan 2023 - 2022 NMRA Convention - Bob Hochstetter
Feb 2023 - AP Electrical Certificate - Gary Myers
Mar 2023 - TBD - William Boorman
Apr 2023 - Signaling - Stu Jones
May 2023 - 3D Printing - Grant Harrison
Jun 2023 - Contest Model: 1903 Salida DG Turntable Bridge - Gary Myers
Oct 2023 - Street Cars - Grant Harrison

Upcoming Show 'n' Tell Theme for 2022

December-Holiday Theme

Announcements

In an attempt to reduce problems, we continue to ask that Show 'n' Tell photos, Clinic presentations, and Tool Time photos be taken before the meeting and sent to Gary Myers (garymyers06@comcast.net) for presentation at the meeting and to the editor for inclusion in the Sunrise Herald (rlhoch422@gmail.com). (Ed.)

Announcements

The Foothills Society of Model Railroaders swap meets
Green Mountain Presbyterian Church
12900 W. Alameda Parkway
Lakewood, CO
9:00 a.m. -11:30 a.m.
(303) 989-0087 or (303) 985-1491
The meets are held on the third Saturday of odd numbered months.

The Sunrise Division's modular layout will be set up at the Rocky Mountain Train Show November 26th & 27th.

Rocky Mountain Train Show - Holiday 2022

November 26th & 27th

Sat 8:00 AM - 5:00 PM MST - Pre-Registered

TCA/NMRA Members

Sat 9:00 AM - 5:00 PM MST - Public

Sun 9:00 AM - 4:00 PM - Public

The Ranch Events Complex

5280 Arena Circle

Loveland, CO 80538

Exhibit Areas

Center Hall, North Exhibition Hall,

South Exhibition Hall, T. McKee

Building

Module Update

Work on the modules is coming to a close in readying them for the November TCA train show. The girder bridge will be glued down but the track will need ballasting at a later date. The truss bridge will be temporarily tacked down as much work needs to be done under the bridge and module. Two slow motion switches are installed and working. All-important track switches are now fascia mounted. The icing dock should be ready. The ironworks building is near completion. Most modules have ground cover matched to the next module.

Larry Stephens

Tool Time

Gary Myers used Tool Time to request ideas for 2023's Show 'n' Tell subjects. The list will be in next month's Herald.

Show 'n' Tell

This month's Show 'n' Tell subject was 2000's Era.

Photographs not submitted

Willam Boorman presented two photographs for Show 'n' Tell: the first of a SW8 switcher and the second of a drop end gondola.

CLINIC

Bob Rothgery and Rich Flammini presented a clinic on model structures.

The first PowerPoint presentation was an introduction. The captions were provided by Rich.



A simple kit structure



A similar kit with a splash of color for variety



The same kit but “bashed” with an addition

The second PowerPoint presentation showed the addition that Rich made to this building kit in order to provide variety to the houses on the street.

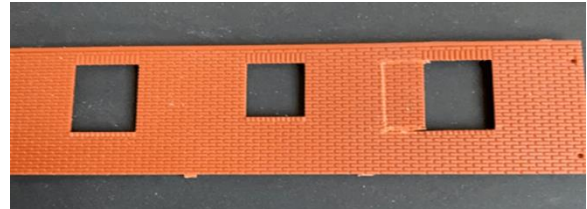


A different view of the kit bashed house

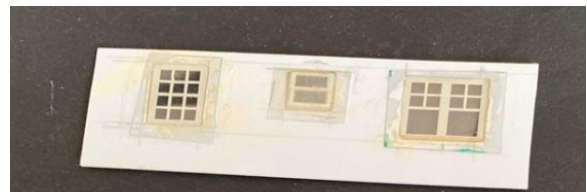
The following are examples of the work in progress on the kit bash



The added panel to support the new sidewall



Expanding the window on the right for variety



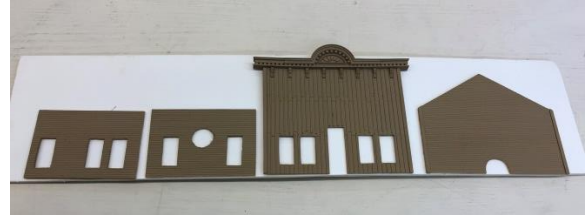
A full panel for support of the back wall



Ready for assembly after the right wall is mortared



Caliper for window placement.



Airbrushed the exterior of walls, finished coat.



Other three walls.



Airbrushed the interior four walls in primer.



Airbrushed the windows and doors in exterior trim color



Chimney, floor, and foundation frame



More windows, trim, wainscot, and kitchen walls.



Stones of foundation, six colors, same as chimney.



Stained porch planks, and varnished hardwood bar.



Foam formers to clamp the roof angle. No cost.



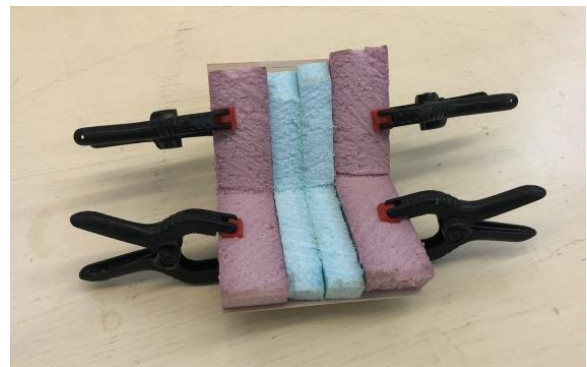
Inside windows cut down, same as outside, but with peaks cut off.



Roof boards in clamps, with formers, part one.



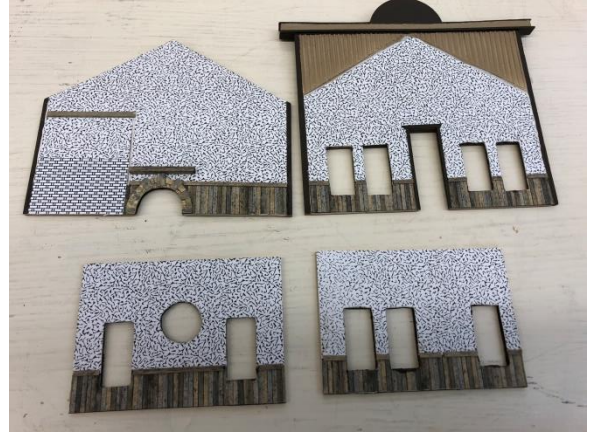
Sliding angle bracket to establish the roof angle. I did not have the adjustable clamp that Stuart spoke of a couple of meeting ago.



Roof boards in clamps, with formers, part two.



Roof truss assembly



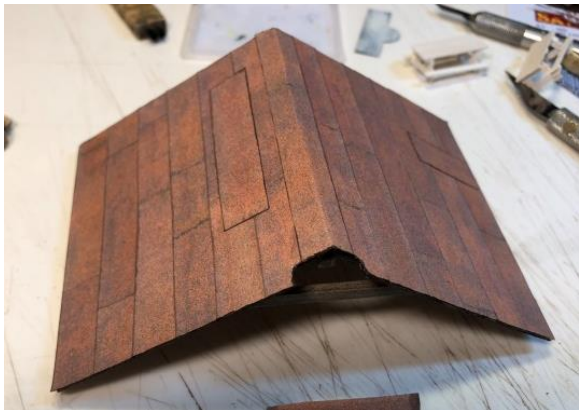
Finished four walls with wallpaper made from envelopes, wainscot, chair rail and baseboards before inserting window trim.



Roofing paper S scale cut down to HO scale. I tarred the edges.



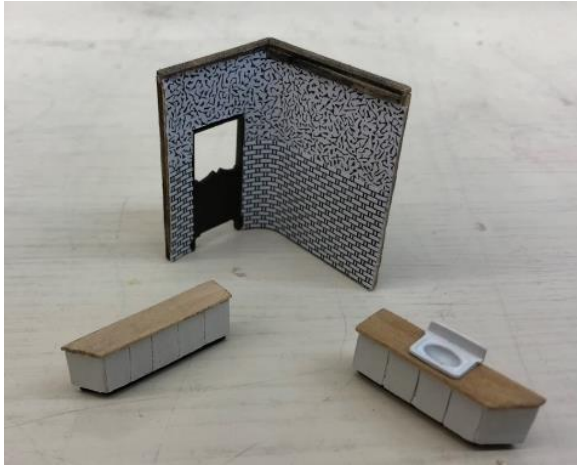
Finished front wall and two side walls after window trim.



Roofing cut out for the chimney, lightly patched.



Finished three walls with trim.



Kitchen partition wall, cabinets, counters, and sink top.



Finished bar with beer tap, barrel stand, and food. Food of bird seed and tropical fish food.



Kitchen area before the walls were in place.



Finished bar, spittoon, foot rail, coffee pot, beer tap, food, and liquor bottle.



Kitchen partition in place showing the elk head mounted, the worn flooring, the hanging pot in the fireplace, pewter mugs on wall behind the bar, and the firewood supply.



Cutting a hole for a door----WHY----because there had to be a second door.

Not for fire regulations, but for access for delivery of groceries and firewood. But also for the A.P. judge as well. What a pain to cut through the wall, the wallpaper, base trim and chair rail without screwing it up. I could not lay it down. I should have learned my lesson the last time before an A.P. judge.



Painting people using roofing nails and ACC to hold them in a 2"x2" block.



Strip wood picnic tables and tablecloths out of more envelopes.



Two walls with interior furnishing.



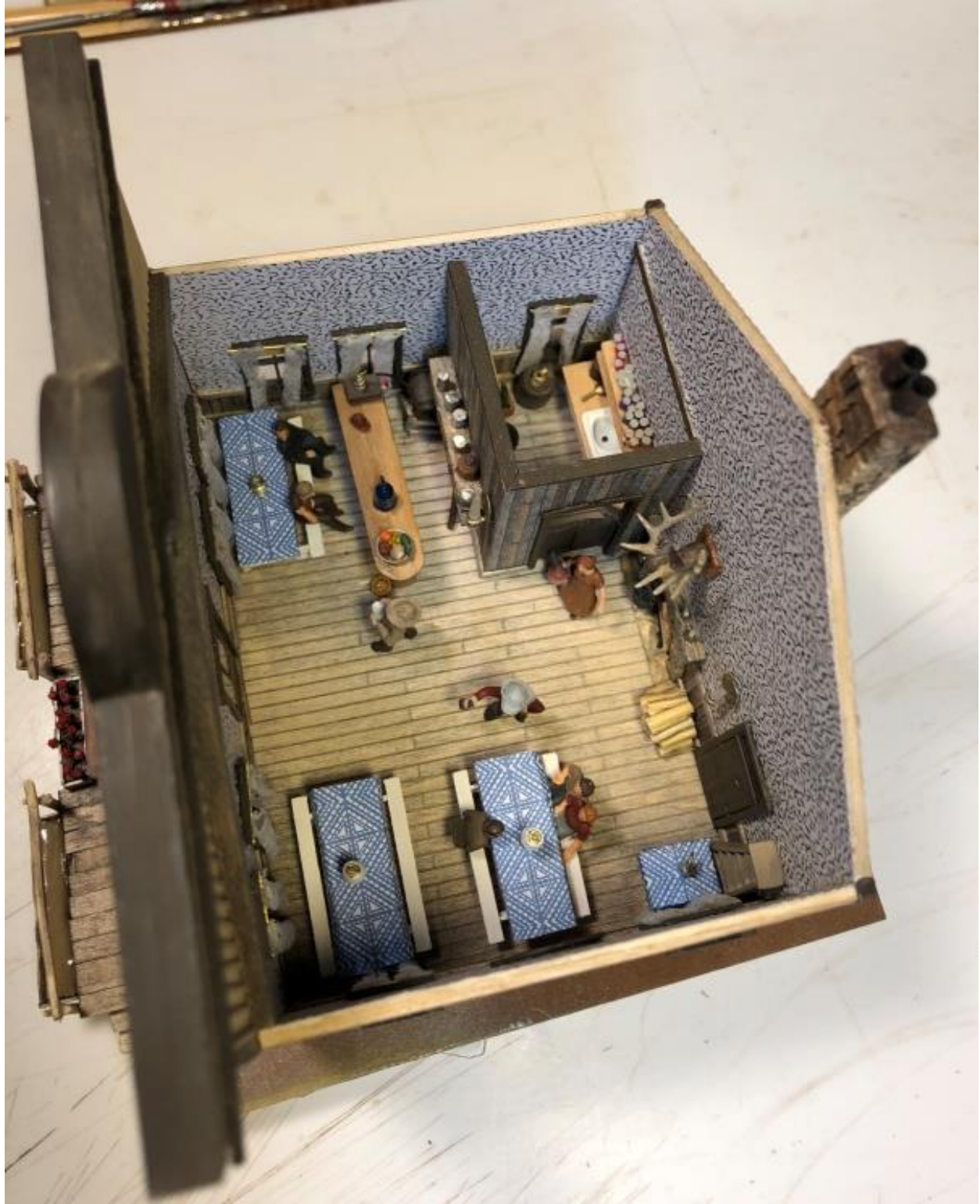
Tables with people. Cowboy hats out of paper discs.



Back door entry with a bag of potatoes being delivered, firewood, and trash can.



Finished front with sign and flowers, people, watering troughs, hitching posts



Four walls together.