



# Sunrise Herald

January 2025 Volume 18 Number 1

## Sunrise Division Officers

Superintendent.....William Boorman  
 Asst. Superintendent.....Dennis Hagen  
 Secretary.....Bob Hochstetter  
 Treasurer.....Dave Clifford  
 Program Chair.....Gary Myers  
 Division AP Chair.....Gerry Meltzer  
 Youth Coordinator.....Position open  
 Education Chair.....Stewart Jones  
 Modular Layout Chair.....Adam Crews  
 Herald Editor.....Bob Hochstetter

## In the Herald

Layout Photos of the Month.....	1
January Meeting Notes.....	2
Next Meeting.....	2
Video of the Month.....	2
Upcoming Tool Time.....	2
Upcoming Show 'n' Tell Theme.....	2
Upcoming Clinic.....	2
Module Report.....	2
Show 'n' Tell.....	3-4
Tool Time .....	4
Clinic.....	5-7
Sunrise Extra.....	7-8
Announcements.....	8-9

## Layout Photos of the Month

This month's three photographs are from Nick Tomlinson's HO scale home layout. They were taken as part of January's Sunrise Extra Event on January 10, 2025. Bob Hochstetter photos.



## January Meeting Notes

The regular monthly meeting of the Sunrise Division of the National Model Railroad Association was held January 2, 2025, at Holy Love Lutheran Church. Superintendent William Boorman conducted the meeting. The meeting was called to order at 7:00 p.m. Nineteen members attended in person, and none joined via Zoom.

William began the meeting by asking the members for a self-introduction and to tell what Christmas presents they had received.

Tool Time, Show 'n' Tell, the Clinic, Announcements, and more followed the self-introductions. All of these are included in this issue of the Herald.

William adjourned the meeting at 8:36 p.m.

## Next Meeting

The next meeting will be Thursday, February 6, 2025, in person at Holy Love Lutheran Church, 4210 S. Chambers Road, Aurora, Colorado. The meeting will start at 7:00 p.m. The meeting will also be streamed on Zoom with sign-in between 6:30 and 7:00.

## Video of the Month

It's that time of year. If you are a fan of snowplows, this is the video for you.

**Ultimate Train Snow Plowing Compilation - Trains vs. Snow**

<https://www.youtube.com/watch?v=8bwf90pINQ0>

If you find a video that you think our members might enjoy, please send me the link. (Ed.)

## Upcoming Tool Time

**February**—Tool Tote—Bob Rothgery

## Show 'n' Tell Themes for 2025

February—Caboose

March—Yard/yard design

April—Depot

May—Reefer

June—Sleeper car

July—Engine facility/design

August—Layout schematic

September—Vehicle trucks, utility type

October—Tractor-trailer rigs

November—Scenery

December—Anything Goes

## Upcoming Clinic

**February**— Freight Car Weathering—Gary Myers

## Reminder

To reduce problems, especially for those who join the meeting on Zoom, we continue to ask that Show 'n' Tell photos, Clinic presentations, and Tool Time photos be taken before the meeting and sent to: Gary Myers ([garymyers06@comcast.net](mailto:garymyers06@comcast.net)) for presentation at the meeting, and to the editor ([rlhoch422@gmail.com](mailto:rlhoch422@gmail.com)) for inclusion in the Sunrise Herald. (Ed.)

## Module Report

There was nothing to report at the January meeting.





## Show 'n' Tell

This month's Show 'n' Tell subject was **Flatcars**. Four members showed these nine flatcar photos.



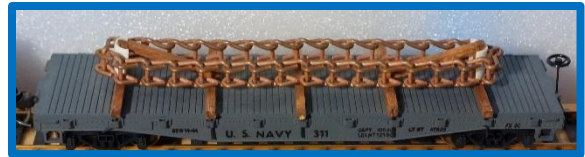
Flat cars look best with loads. Here is one with a pipe load and one with a load of auto frames. Stu Jones



Double stack well flats. The "well" allows the cars to stack containers two-high. They often are found in units of five. Stu Jones



This is a TOF or trailer-on-flat for carrying truck trailers. These require wide radius curves. Stu Jones



This is an Athearn Navy flatcar with a chain from a naval ship. Larry Stephens



This is a Lionel UP four-truck flatcar with load. Larry Stephens



This is an Athearn MOW car with a load of ties. The floor is a printed copy of real wood. The dark square next to the ties is a scanned copy of a pile of ties photoshopped on to the printed floor. Larry Stephens



This is a Tyco Great Northern, post Mantua, flatcar. The floor is snap-on and a good candidate for a real wood floor. Larry Stephens



My 1956 AC Gilbert CO, New York, New Haven and Hartford Railroad depressed center flat was a show find a few years back and the 3d printed transformer load is from Model Scenery World to replace the original transformer. I upgraded the trucks and Kadee couplers, and added some tie down chains. This car usually sits on the power plant tracks of the Sunrise modules. Adam Crews



*This is a Micro-Trains N-scale depressed center flat car. The prototype was built in 1930 by General Steel Castings. It had a one-piece cast steel Commonwealth frame and a hand brake at each end. It also had 6-wheel Commonwealth trucks. Bob Hochstetter*

### Tool Time

Bob Hochstetter showed two saws that are handy for modeling work.

### Small Saws for Model Work

Bob Hochstetter  
Sunrise Division Meeting  
January 2, 2025

### Razor saw

#### RAZOR SAW

70 TEETH  
0.005 INCHES THICK  
APPROXIMATELY 3/4" X 1 3/4"

USED FOR CUTTING PLASTIC AND WOOD  
CAN BE USED ON TRACK WITH GREAT CARE



Available from Micro Mark package of 5/\$16.95

### #27 SAW BLADE



3 INCHES LONG  
0.020 INCH THICK  
FITS IN AN X-ACTO HANDLE  
FOR CUTTING WOOD AND PLASTIC

Available at Colpar Hobbies package of 5/\$4.99





## Clinic

Nick Tomlinson presented January's clinic. His PowerPoint presentation is reproduced here. *It will be necessary to magnify these images to read the print on the slides. (Ed.)*



# Layout Lighting

Nick Tomlinson

### Empty Basement

When we bought the house in 1990, the two rooms in the main part of the basement had minimal lighting on the ceiling. Note the year. There were not as many lighting options then as there are now. It had three four-foot fluorescent two-tube fixtures and two recessed can lights. These would not light my planned railroad very well.



### Benchwork

The lower level benchwork was built 6 inches wider than the upper level so there would be better visibility on the lower level. The lights under the upper-level are behind the fascia closest to the aisle to light the lower-level from the front as much as possible.



### Lower-Level Lighting - Christmas Tree Lights

The first attempt at lighting the lower level was with white Christmas tree lights. This was not bright enough. Rope lights were tried next with the same unsatisfactory results.



### Lower-Level Lighting - Bathroom Incandescent Light Fixtures

40-watt incandescent light bulbs were tried next. They lit up the lower level better than previous attempts. They needed to be mounted inside the upper level benchwork closest to the aisle to light the lower level from the front. Bathroom lighting fixtures worked, but the length did not fit all spaces because of the spacing of the benchwork supports.



### Lower-Level Lighting - Fluorescent Light Fixtures

Fluorescent fixtures worked, but the lengths did not fit all spaces because of the spacing of the benchwork supports

Two 4-foot T-8 LED tubes One 3

-foot T-12 Fluorescent tube



### Lower-Level Lighting - Light Bulb Sockets

Individual light bulbs can be placed where they are needed and as many as needed between the benchwork supports. 40-Watt incandescent bulbs were first used, then 40-Watt compact fluorescent spirals, and finally 40-Watt equivalent LEDs. These were daisy-chained with 16 or 18-gauge wire and connected with very tightly twisted wire nuts.



### Lower-Level Lighting - Light Bulb Sockets

The lamp sockets were screwed in place using 1-inch conduit clamps. These clamps fit perfectly over the sockets. The lamp sockets have been discontinued at Lowes.



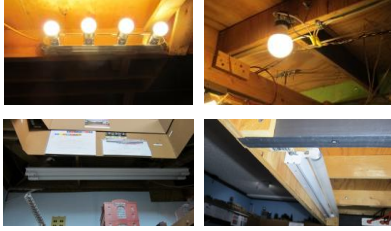
### Lower-Level Lighting - Eight-Foot LED Light Strip "Tubes"

A friend gave me four 8-foot LED light strips which I tried to mount under the upper level benchwork to light the lower level. These did not work because they hung too low, were too bright, and shined directly into the eyes.



#### Lower-Level Lighting Summary

Although the wire-nut connected sockets worked, they were not a good solution. The wire nuts could come loose, and the lighting on the lower level was not bright enough to suit me. Other solutions were bright enough but would not fit the space between the benchwork supports very well.



#### Lower-Level Lighting - Home-Made Light Fixtures

A 1x4 board was cut to the length between the bench work supports. 1x2 strips were cut 3-1/2 inches long and screwed to the 1x4 to hold the sockets. These 1x2s were necessary because of the diameter of the bulbs. 1x2 strips were screwed to the ends to attach to the benchwork behind the fascia.



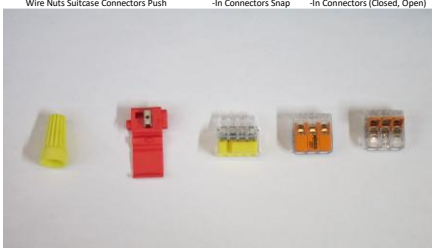
#### Lower-Level Lighting - Home-Made Light Fixtures

The fixtures were wired with push-in connectors. 16-gauge wire was used between the sockets. Both ends of 18-gauge extension cords were connected to the ends on some fixtures. Snap-in connectors were used with plain wire instead of the extension cord ends between other fixtures. The maximum wattage an 18-gauge wire can safely handle is 1680 watts.



#### Wire Connectors

Wire nuts and suitcase connectors were not used. Push-in connectors require solid wire or soldered stranded wire. Once inserted, a wire can not come out. Snap-in connectors can use solid or stranded wire. Wire can be removed by lifting the tab but can not come out otherwise.



#### Lower-Level Lighting - LED Ribbon Lights

There are two narrow areas 6 or 12 inches deep that have 16-foot ribbon strip lights. I bought the last one at Lowe's before they were discontinued, and the ones online were too expensive. Because of their dimmer brightness, two or three strips would have been required to light the 30' deep areas.



#### Upper-Level Lighting - Fluorescent Ceiling Fixtures

The existing two-tube fluorescent fixtures were not enough to light the upper level. The sides of the fixtures had diffusers that were removed to make the light brighter to the sides. Mixing color temperatures creates weird photos.



#### Upper-Level Lighting - Eight-Foot LED Strips

The four 8-foot LED strips were mounted to eight-foot 1x2s and screwed to the ceiling. 6-inch wide foamcore boards diffuse the light. Foamcore boards came from Office Depot (cheap & thin), King Soopers or Safeway (better), and Hobby Lobby (best). The thin Office Depot ones worked best for the diffusers.



#### Upper-Level Lighting - Eight-Foot LED Strips

The light strips were too bright so I hung seven-inch styrene strips from cup hooks to support six-inch wide foamcore board which diffuses the light. Mixing color temperatures creates weird photos.



#### Upper-Level Lighting - Eight-Foot LED Strips

When standing on the platforms to access the upper-level, the light shines directly into the eyes. A 1-1/2-inch cardboard strip, used for concrete expansion joints, blocks the light but still diffuses it. Some upper-level areas which have no switching are still dimly lit. Those areas are just cloudy.

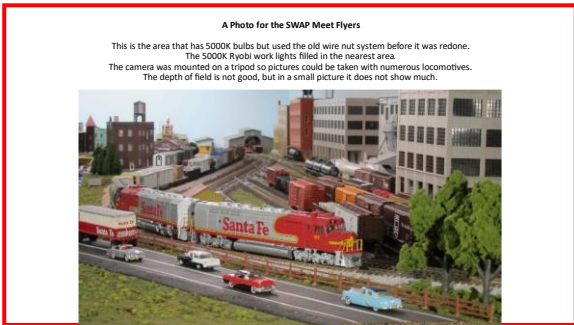
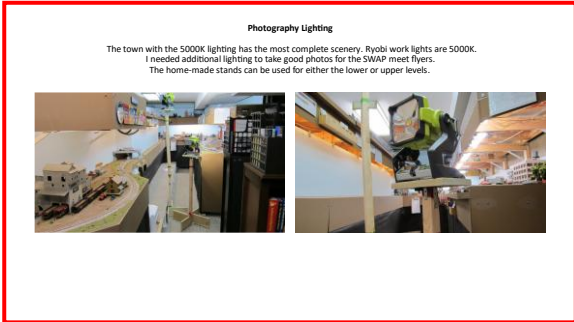
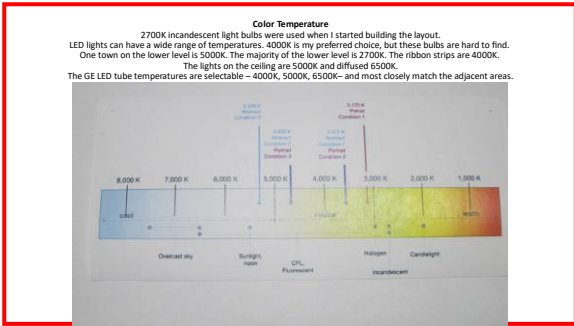


#### Turn On the Layout Lights

There are two switches to turn on the layout lighting (not the built-in ceiling lighting). A 16-gauge cord runs from the outlet to the switch box and then to the outlet box. 16-gauge extension cords run to power strips. The lighting fixtures plug into the power strips. All stranded wires on custom length cords have been soldered to insure there are no stray strands.







### Sunrise Extra

This month's "Sunrise Extra Event" was held on Friday, January 10th. We met for lunch and conversation at the IHOP restaurant in Aurora. Following lunch, we made the short drive to Nick Tomlinson's home to see his layout and to run trains. There was no planned operating session, but participants ran trains, both Nick's and their own, over the layout. Here is a link to a YouTube video that Adam Crews made at the Event:

<https://youtu.be/Oph4CVf97IE>



Pictured: Sunrise Division members at the Sunrise Extra Event at IHOP.



Pictured: Adam Crews running his train on Nick Tomlinson's layout during the Sunrise Extra Event.



Pictured: Nick Tomlinson overseeing operations on his layout during the Sunrise Extra Event.

Mother Lode Model Railroading  
 14 Inverness Drive East  
 Suite A-140  
 Englewood, CO 80112

Come and Stake Your Claim! -  
 • February 8th 8:00 AM - 12 Noon  
 Also By Appointment - Call Us!

[www.ebay.com/str/motherlodemod-elrailroading.com](http://www.ebay.com/str/motherlodemod-elrailroading.com)

Email: [danraap2021@gmail.com](mailto:danraap2021@gmail.com)  
 (303) 819-2937

**WE BUY COLLECTIONS!**

\*\*\*\*\*

The Foothills Society of Model Railroaders swap meets  
 Green Mountain Presbyterian Church  
 12900 W. Alameda Parkway  
 Lakewood, CO  
 9:00 a.m. - 11:30 a.m.  
 on the third Saturday of odd numbered months  
 (303)989-0087 or (303)985-1491

## From Superintendent Boorman

If interested in presenting a clinic at the train show, please contact me.

[caspienkronos@yahoo.com](mailto:caspienkronos@yahoo.com).

Forwarded message begins here:

**NMRA Clinics at the Rocky Mountain Train Show April 5 & 6 at the National Western Stock Show Site.**

Everyone-

I would like to continue the tradition of having an NMRA clinic room at our show.

I spoke with Larry Stephens and Stewart Jones this morning as they are interested in doing clinics for us.

There will be four clinic rooms available. Two of them are fully enclosed and well suited for projector presentations. The other two are more open and better suited for product displays and hands-on clinics (but could still be used for projector presentations.)

So, we are looking for clinics about railroads, and model railroad topics such as scenery, buildings, rolling stock, wiring, signals, etc.

Clinics are typically one hour long and are scheduled for 10 AM, 11 AM, Noon, 1 PM and 2 PM both days.

We have four projectors available to presenters - 2 have HDMI inputs and the other 2 have USB inputs.

If you are interested, I will need the name of the clinic, a brief description of the clinic, a brief presenter biography, desired clinic times, and projector needs.

THANKS!

James Mackay  
 Clinic Coordinator





Saturday & Sunday, September 27-28th, 2025

**Island Grove Event Center**

421 N 15th Ave., Greeley, CO

Saturday 9:00am - 5:00pm

Sunday 9:00am - 4:00pm

Model Displays—Clinics—Hands on Stations

Vendor Room—Layouts

\$35—Early Registration

**[www.colorado-rpm.org](http://www.colorado-rpm.org)**



Hosted by the  
Colorado Model Railroad Museum  
and the  
Northern Colorado Division NMRA

