



# Sunrise Herald

## February 2012

Volume 5, Number 2



### In The Herald

January Clinic On Detailing .....	1
Membership Report .....	2
Golden Spike Ceremony .....	2
Division Data .....	2
NMRA Notes .....	3
From The Chief .....	3
Tool Time Tips .....	4
Show & Tell .....	5
Focus on the Future .....	7
Show & Tell Themes .....	7
Upcoming Events .....	7

## January Clinic On Detailing

Detailing cars to contest standards was the subject of Gary Myer's clinic at the January meeting of Sunrise Division. Using kits, Gary described techniques and processes to gain points when the cars are judged.

Gary gave several tips on preparing cars for judging. In particular, he emphasized documenting each step, such as re-

placing the decking on flatcars or replacing the roof walks.

Using three Athern kits, Gary showed how he added brake rigging to box cars, an important addition to a car meant to be judged.

*Above: Gary Myers addressed an interested audience using both demonstration and PowerPoint.* (Photo by Tom Frerichs)

-SH

# Membership Report



GARY MYERS — ACTING MEMBERSHIP CHAIR,  
720-837-4393 E-MAIL: GARYMYERS06@COMCAST.NET

## New Members

David Bauman of Parker, recently signed up by Rich Flammini and David Bol at the November TCA show, made his first meeting this month. We welcomed Detlef Kurpanek for his first visit to our domain, who was by to see Steve Schweighofer and got a ride over with Dave Spritke—who we've missed for quite awhile. Maybe they can join the Flammini/Kerbaugh/Roque car pool? Where has Larry Cotter been? Rich, you guys need a Railway Express bus. Dave Cochrun, who would normally be sailing the warm waters of the Gulf, also was present. With this crowd we pushed our attendance to 31, a third of our total division. That's pretty good, and it actually looked crowded at the meeting this month in the Holy Love Lutheran Church's Fellowship Hall.

## Member Unit Train

The Sunrise Division train is at 92 cars (members). We had 3 cars receive new shop dates (renewals) from the Car Maintenance Department. We have three cars rolling towards the derailler so I'm putting in extra time as clerk in the Railway Post Office car. Unfortunately, we may be seeing the last of Ron Bennell, who's off to Down Under because of a work transfer. Ron had some really nice lightweight modules and a lot to share that I'm going to miss.

## New Searchlight Car

For some reason I never updated the list of "Missing In Action" for my searchlight car last month, so this month I am rolling out a brand new searchlight car courtesy of the Denver Broncos. Perhaps we need a little Tebow magic to locate these guys and bring them to one of our meetings. Keep on the lookout for:



Avery Avcilla  
Larry Boyce  
Allen Clarke  
James Davis

Nicholas Gully  
Roger Krause  
Gary Meents  
Thomas Paganelli



Your investment in the NMRA benefits not only you, but also the future of model railroading. Help make sure our hobby is strong.



## Golden Spike Ceremony

In 1869 the Golden Spike was driven in at Promontory Point, Utah. Actually, it was tapped into a pre-cut hole, and the two railroad officials, Stanford and Hewes, wielding a special silver track maul missed hitting the spike entirely.

When a layout's track is completed enough to run a train, many modelers celebrate the event with their own Golden Spike Ceremony. John Griffith took a photo of his construction crew marking the occasion. Unlike the original scene, there doesn't seem to be any liquor bottles in evidence. It is true, though, that the original 1869 photo was later edited, removing the bottles to satisfy temperance supporters. —SH



## Division Data

Sunrise Division promotes and encourages model railroading from I-25 east to the Kansas border. We welcome all model railroaders, regardless of skill or experience, because our goal is to have fun.

The *Sunrise Herald* is a publication of the Sunrise Division of the Rocky Mountain Region, National Model Railroad Association.

## Division Officers

Division Superintendent . . . . . Gary Myers  
Asst. Division Superintendent . . . . Donald Francis  
Treasurer . . . . . William Johnson  
Secretary/Editor . . . . . Tom Frerichs  
Program Chair . . . . . Jim Laird  
Modular Committee Chair . . . . . Donald Francis  
Boy Scout Liaison . . . . . Louis Surles  
AP Chairman . . . . . David Bol  
Editor e-mail . . TOMFRERICHS@TOMFRERICHS.COM  
Webmaster e-mail . . GARYMYERS06@COMCAST.NET





# Full Steam Ahead for 2012

*Another year, new challenges and new projects.*

GARY MYERS, DIVISION SUPERINTENDENT

## Sectional Layout

I am very hopeful we can *finally* start working on our sectional layout modules this year. The basic design has been completed, and track plans have been drawn up. Next, actual construction of the basic frames will be professionally constructed by Don Francis in his cabinet shop. With the frames built to standards so they precisely fit in the Sunrise trailer, the next step is to locate a place where we can hold weekend workshops. I envision this as a process where we will sign up members for specific sessions and work in teams.

## Big Horn Mixed RMR Convention

Let us not forget our Division's significant contribution to the Region this year with yet another Regional Convention. If you haven't ridden the Cumbres & Toltec Scenic Railroad before, don't let this opportunity slip by. It's a great value. Although I've ridden the train from Chama to Antonito before, what will make this ride so special are the photo opportunities without all the spectators and passengers in your photos. The train will also feature several freight cars in the consist. Believe me, usually it is darn near impossible to get decent pictures of the trains—especially running—without railfans and lookie-loos running all over the place. Our former superintendent and Past Region President Dick Hunter has had plenty of experience lining up photo shoots with the C&TSR, and he knows where and how to do photo run-bys. This train ride will certainly out-do the train ride during the 2006 convention in Chama, and we will stop at the best scenic areas between Chama and Big Horn. If you haven't been to a convention or ridden this train for awhile—or ever—this will be a great time to go.

## Summer Break

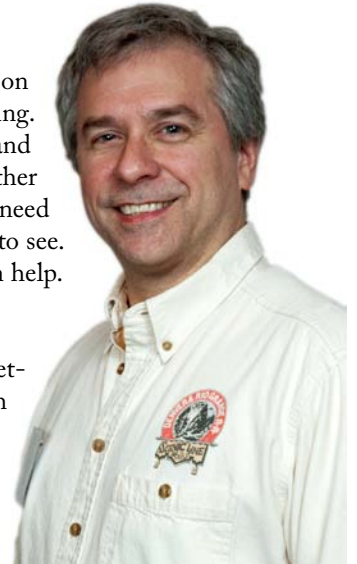
Because of the convention, we will be skipping the June meeting. We are also considering a railfan meet at Palmer Lake the weekend following July 4th in addition to or in lieu of the July meeting. We would meet at the picnic tables at the north end of the lake across from where the Santa Fe Depot stood—or maybe it was where the Rio Grande Depot was—from late morning to afternoon. We'll have lunch, watch trains roll by, and have something new and fun to do. Anyone out there have a rail scanner? Please contact me!

## Fall Mini-Meet

I'd like to hold a fall mini-meet on the same day as the fall board meeting. We'll invite the other divisions and out-of-towners to join us for another day of clinics and layout tours. We need new clinics, clinicians, and layouts to see. Contact Jim Laird or me if you can help.

## Division Meetings

We have our usual monthly meetings ahead, several planned with new clinics, Show & Tell, and Tool Time segments. For the opening of our meetings we need more slide shows, videos, or other ideas. Of course, we are still kicking around additional ideas and finalizing plans for all of our meetings and activities for the rest of the year. We need your help to keep bringing new ideas and fun to the group, so don't be afraid to throw in your two cents. —SH

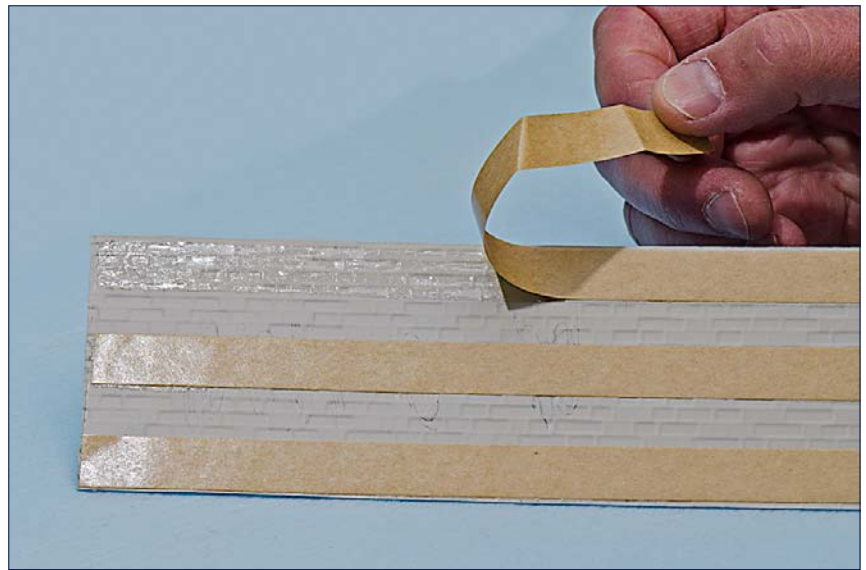


## NMRA Notes

- The Kalmbach Library's immensely popular *The Postwar Freight Car Fleet* book has sold out.
- The Grand Rails 2012 Convention still has some space left for modular layouts at the National Train Show, so if someone in your

Division or Region wants to show the world what they've done, go to [www.gr2012.org](http://www.gr2012.org) and click on the "Contact us" page. Have them tell the committee what they've done and the committee will get things rolling.

- **More Grand Rails 2012 news:** The convention has some great things planned for non-rails. There's a cooking demo that will make attendees think they're watching a stand-up comedian do a cooking show and great entertainment at the luncheon in one of the most beautiful ballrooms in the country. There's also a ride on a dune schooner to see the 1100 acre Saugatuck Dunes. Have non-rails go to [www.gr2012.org](http://www.gr2012.org) for all the details.
- **This year registration for Grand Rails 2012** will be handled in a new way. Instead of the large registration package inserted into *NMRA Magazine*, the full package can be downloaded from [www.gr2012.org](http://www.gr2012.org). Those who prefer a printed piece can send their request, along with their name and address to: GR 2012 Registrar, 4165 Costa NE, Grand Rapids, Michigan 49525. There will also be a registration form and ad appearing in an upcoming issue of *NMRA Magazine*.



## Tool Time Tips



## A Sticky Situation

**R**ich Flammini finally got to do his Tool Time segment in January. It had been re-scheduled several times for various reasons, but it was well worth the wait. What did he demonstrate? It was double-stick tape...without the tape.

What Rich showed was 3M ATG Adhesive Transfer. This product has the sticky part of the tape on a brown paper carrier. You press it down on one surface, peel off the carrier, and then you can



adhere it to another surface. The advantage? It is not wet like glue, nor does it have a limited working time. Unlike double-stick tape, it does not have any thickness.

Rich has used the product to adhere thin styrene sheets to other forms, attach blinds to the inside of "windows," and its obvious use: to attach signs to model buildings. (Photos by Tom Frerichs) —SH





## Show & Tell



**F**ighting snow was January's Show & Tell theme, and we had several models on display. Let's start with Steve Schweighofer's finely detailed Nn3 Leslie rotary snow plow (*left and below*). The detailed interior was based upon photographs of the prototype.

(All photos by Tom Frerichs)



Rich Flammini brought an HO-scale "Oshkosh Big Blade" plow (*above*) which is on its way to fight the big snow. Fortunately we haven't had that kind of snow in Denver.

John Griffith, who won the random drawing for the Caboose Hobbies gift certificate, brought this HO-scale Walthers kit with his Atlas Alco switcher (*below*).





## More Show & Tell



Stewart Jones brought his HO-scale Jordan Spreader (*above*) and provided the following description:

"Modern railroads tend to prefer the Jordan Spreader over other snow fighting equipment because of its ability to move large quantities of snow well away from the tracks. Its hydraulically operated blades—"wings"—can push snow up to twenty feet on either side of the track. The blades on each side can be operated independently, usually to push snow to the downhill side of the track. A rotary

plow, by comparison, can only plow a deep trench that can quickly capture more snow. Rotaries are typically used only for very deep snow drifts.

"The Jordan spreader is unidirectional, meaning that it must be turned at the end of its run to make a reverse path or backed down to make a subsequent pass. It is un-powered and requires one or more locomotives to push it through the snow. The pushers are usually dedicated service during the winter." —SH



Tim Harkey couldn't bring his exhibit; that's because it is real. This is a snow blower on the BNSF. Basically it's a jet engine that can be pointed down and to the left and right. The exhaust from the engine melts and blows away the snow, along with loose bal-

last. The crew has to be very careful working around one of these machines when it is operating. Normally they are used to clear switches.

(Photo by Tim Harkey)

## Focus on the Future



## February Has Circuses and Photos

The February meeting will open with a video of Lanny Losasso's Circus Train running on the old Sunrise Modular layout. Of course it will be followed by a great Tool Time Tip segment.

"Photography for Model Railroaders" is the topic for the clinic being presented by the editor of the *Sunrise Herald*. It will concentrate on using your camera, point-and-shoot to DSLR, to take photographs of stuff to model, stuff you have modeled, and prototype equipment. He's hoping he can best his previous record and get more than five people to fall asleep during the clinic.

-SH


### WANTED: PROMOTION CHAIR

**\$Job Description:** Make promotional items for Sunrise Division activities, such as flyers for mini-meets, and division meetings. Make new friends at the copy store and Office Depot.

**\$Benefits:** Amaze your friends by displaying your wonderful talents. Let your creativity inspire us, the more graphically challenged.

**\$Hours:** Unlimited, as many as you want.

**\$Pay:** Know that through your advertising you could save lives, giving meaning to someone's life who may have otherwise wasted away, never becoming a model railroader.

 **APPLY TO YOUR FRIENDLY NEIGHBORHOOD  
SUNRISE DIVISION SUPERINTENDENT.**

## Show & Tell Themes

When you submit a model for the show and tell, you automatically are entered into a drawing for a gift certificate from Caboose Hobbies in Denver.

February 2..... Engine Servicing Facilities  
March 1..... Turntables  
April 5..... Waterfront Structures  
May 3..... Logging Equipment

## Upcoming Events

- ◇ *February 2, Sunrise Division Regular Meeting*, Holy Love Lutheran Church, 4210 South Chambers Road, Aurora, Colorado. 7:15 PM
- ◇ *February 4, Free Clinics*, Caboose Hobbies, 500 South Broadway, Denver, Colorado. 10:30 AM: Speaking of Narrow Gauge. 1:30 PM: Painting Figures.
- ◇ *February 11, Free Clinics*, Caboose Hobbies, 500 South Broadway, Denver, Colorado. 10:30 AM: Modeling Trees. 1:30 PM: Weathering Rolling Stock.
- ◇ *February 18-19, Winter Photographer's Train & Night Shoot*, Durango & Silverton Narrow Gauge Railroad.
- ◇ *February 18-19, Rails in the Rockies Train Show*, Estes Park Conference Center, Highway 36 & Highway 7, Estes Park, Colorado. Saturday 9 AM—5 PM, Sunday 9 AM—4 PM
- ◇ *February 18, Free Clinics*, Caboose Hobbies, 500 South Broadway, Denver, Colorado. 10:30 AM: Soldering. 1:30 PM: Scenery—Vision to Reality.
- ◇ *February 25, Free Clinics*, Caboose Hobbies, 500 South Broadway, Denver, Colorado. 10:30 AM: Layout Design for Operations. 1:30 PM: Tools.
- ◇ *March 1, Sunrise Division Regular Meeting*, Holy Love Lutheran Church, 4210 South Chambers Road, Aurora, Colorado. 7:15 PM
- ◇ *March 3, Free Clinics*, Caboose Hobbies, 500 South Broadway, Denver, Colorado. 10:30 AM: Airbrushing. 1:30 PM: Open Car Loads.
- ◇ *March 10, Free Clinics*, Caboose Hobbies, 500 South Broadway, Denver, Colorado. 10:30 AM: Lightweight Scenery With Geodesic Foam. 1:30 PM: DCC Applications.
- ◇ *March 17, Model RR & Toy Train Swap Meet*, The Foothills Society of Model Railroaders. Green Mountain Presbyterian Church, 12900 West Alameda Parkway, Lakewood, Colorado. 9—11:30 AM
- ◇ *June 8-10, Big Horn Mixed*, 2012 Rocky Mountain NMRA Regional Convention, Chama, New Mexico. Mixed steam freight railfan photographers' special on the Cumbres & Toltec Scenic Railroad. [www.big-hornmixed.com](http://www.big-hornmixed.com)
- ◇ *July 24–August 4, Grand Rails—2012*, NMRA National Convention. Grand Rapids, Michigan. [www.gr2012.org](http://www.gr2012.org)