



Sunrise Herald

July 2016 Volume 9, Number 7

Sunrise Division Officers

Superintendent.....Steve Schweighofer
 Asst. Superintendent.....Bob Rothgery
 Secretary.....Stewart Jones
 Treasurer.....Rich Flammini
 Program Chair.....Gary Myers
 Division AP Chair.....
 Youth Coordinator.....Ernee Edwards
 Education Chair.....Stewart Jones
 Modular Layout Chair.....Don Francis

In the Herald

Notes from the Sectetary.....1
 Next Meeting.....1
 Upcoming Clinics for 2016.....2
 Upcoming Tool Times for 2016.....2
 Upcoming Show 'n Tell Themes for 20162
 July Meeting Notes.....2
 July Tool Time.....3
 July Show and Tell.....3
 July Clinic.....5
 Sunrise Auction6
 Rocky Mountain Train Show.....7

Next Meeting

Our next meeting will be Thursday, August 4,
 2016 at Holy Love Lutheran Church, South
 Chambers Road at 7:15.

Notes from the Secretary

For the May Clinic Gerry Glancy presented building wood trestles. Among his topics, Gerry discussed adding setouts for fire barrels every 60 feet or so to provide water for extinguishing fires. This problem was not limited to the steam era however. The photo below, that I recently came across, was taken in 2006 somewhere in eastern Colorado or Kansas. I do not know the exact location or the source of the fire, but it may have been a hotbox or more probably a spark emitted by diesel exhaust.



2006 Trestle Fire

No fire barrels are evident in this photo, but this problem can occur in the modern era as well. Obviously nobody was around to extinguish the fire immediately.

Upcoming Clinics for 2016

August – Sunrise Auction
September – Fast Clock Operation: everything you know about fast time is probably wrong
October – Regional Convention
November – Military railroads
December – Christmas treats and movie

Upcoming Tool Times for 2016

August - TBA
September - TBA
October – Regional Convention
November - TBA
December - TBA

Upcoming Show ‘n’ Tell Themes for 2016

August – Shops/Retail
September – RR Pump Houses
October – Regional Convention
November - Military
December – Water Craft//Boat/Ships

July Meeting Notes

Steve Schweighofer, Superintendent, brought the July meeting to order at 7:20 with seventeen members present. We had the usual introductions with one new member. Paul Siebels passed around a flyer from a company that custom prints tee shirts, coffee mugs and other stuff at a reasonable price. The flyer showed examples with the Sunrise Division logo printed on it. See the picture in the opposite column. Rich Flammini provided more details about the auction to be held at the August meeting.

Bill Johnson reported that Caboose is now receiving new shipments of Athearn products.

Caboose also has over 1000 brass models in stock, many on consignment. They are moving cabinets in the store and are adopting a new consignment policy. The price for any consignment item that has not sold for 90 days will be dropped by 10%. The price will keep dropping every 90 days until the item sells or is reclaimed by the seller.

The Sunrise Division modular layout will displayed in the Western History section of the Denver Public library, August 6-7. This is our opportunity to reach a different audience than we typically get at train shows.

The Front Range Division will sponsor their annual picnic at the Colorado Railroad Museum on Sunday, August 14 starting at noon. Those who are not members of the Museum must pay regular admission to enter, but this is a great opportunity to meet with other modelers in the Denver area.



Shirts with the Sunrise Division Logo

July Tool Time

Bob Rothgery presented the July Tool Time with a group of miscellaneous but useful tools, shown below.



Tools in this collection include a plastic jug cut in half lengthwise. Bob explained that his jug originally contained liquid for a colonoscopy preparation, but he uses it as a place to dip plaster gauze for scenery making which is much more agreeable procedure. Next to it are some plastic baby food containers that are excellent for storing small parts. Above it is a Crystal Lite lid useful for mixing small batches of paint or holding drops of ACC for model building. He also included used frosting containers for holding water. There is a poly-brush with an end shaped into a small wedge. Bob uses this to stipple paint onto backdrops to create pine trees. If you have visited his layout, you have appreciated his beautifully painted backdrops. The white pencil shown is useful for drawing in aspen trunks on his backdrops. He included make-up brushes that are useful for a variety of scenery-building techniques. (Make certain you have permission before absconding with one.) Next he showed ordinary drinking straws that are useful for applying ground cover to small areas. Apply the cement, fill the straw with scenery material, then gently blow the material onto the appropriate area. I don't think Bob

mentioned it, but don't inhale through the straw while it is filled with ground cover material. He then described using a scribe for tree planting. It makes a small hole in your scenery base to insert the trunk. The little plastic spoon to the left is a pill counter that makes a super dispenser for track ballast. The white board in the upper left is a magnetic board that is excellent for holding small iron or steel parts. (Such boards often come with your phone directory as refrigerator magnets with advertising.) Finally, the wooden stick at the left contains two prongs for making ruts in dirt or gravel road, almost a necessity for turn-of-the-century layouts, but useful for any era where you model dirt roads.

July Show and Tell

The theme for the July Show and Tell was Locomotives from 1960 through 1969.



Rich Flammini displayed this GP35. EMD manufactured these locomotives from about 1962 until 1966. They were based on the earlier GP9 design but with a prime mover upgraded to 2500 horsepower and a lowered nose.



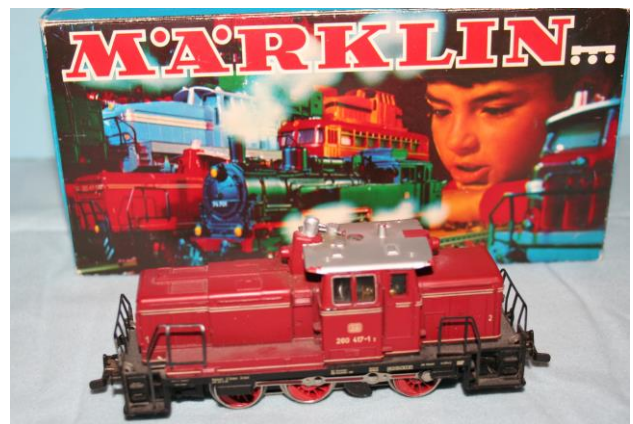
Bob Hochstetter displayed this Atlas Alco unit painted for the Missouri Pacific. This was designated as a DL-701 and was Alco's first high-horsepower locomotive intended to replace the RS-3. It had a 12-cylinder, 1800 HP turbocharged diesel engine. It was produced in both a high- and low-nosed versions, but all twelve MP units had high noses and none were equipped with steam generators. Bob installed a Digitrax decoder in this unit.



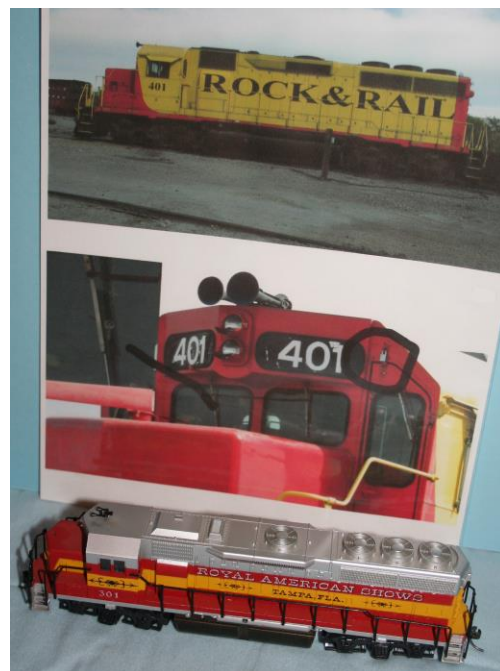
Stu Jones brought in this EMD SD35 made between 1964 and 1965. This was basically a GP35 with three axle trucks replacing the two axle trucks enabling them to be used on lighter rail branches. Relatively few of these units were produced. This was an Atlas model made before Atlas decided to quit the model railroad business in the '70s. Caboose Hobbies then sold off their inventory at bargain prices. Atlas later re-entered the market in a big way.



Ron McHenry displayed two models: the Swiss Rail "crocodile" shown above and the German switcher, shown below. The "crocodile" was an electric locomotive that gained its nickname because of its resemblance to the water beast.



Ron McHenry's German switcher

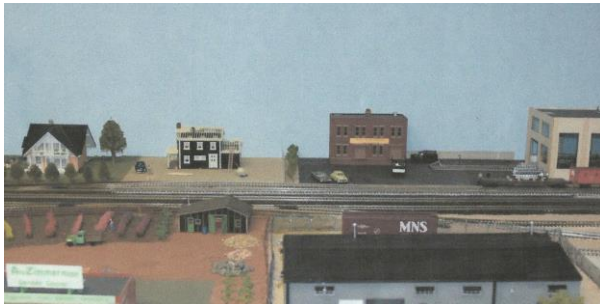


Larry Stephens displayed this GP35.

July Clinic

Rich Falmmini presented the July Clinic on the topic of “Bringing the layout background to life”. Anyone who has long stretches of along-the-wall trackage can appreciate that a bare wall is not the ideal background for your foreground scenery. If your layout features a peninsula, you may still want a backdrop to separate the scenes on the opposite sides of the peninsula. You can easily construct this from hardboard.

The first thing is to prepare the background to look like sky. Choose a light blue latex paint or have a custom color mixed for you. However, as Rich pointed out, the sky becomes progressively whiter as it approaches the horizon. This may be difficult to reproduce and you will probably be forgiven for ignoring it. However, if you are a purist, you can attempt this shading by painting the lower part of your backdrop white or a lighter shade of blue. To blend the colors, work them while the paint is still wet. Take a wet brush – a wide poly-brush is good for this – and stroke the lighter color upward into the darker blue until you have a good-looking blend.



Plain Background

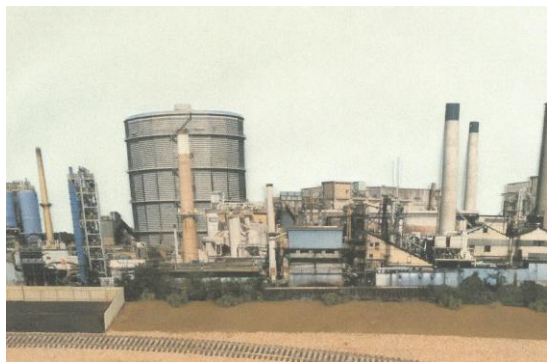
Adding clouds to your sky is another challenging operation and you might want to model a cloudless day. But if you must, a possible technique is to make a set of stencils with an approximate cloud shape. Hold the stencil close to your backdrop and spray white paint upward so that it feathers out near the top.

Note that most clouds are much grayer at the bottom. Follow the same procedure for your original cloud but keep the grey paint close to the bottom.

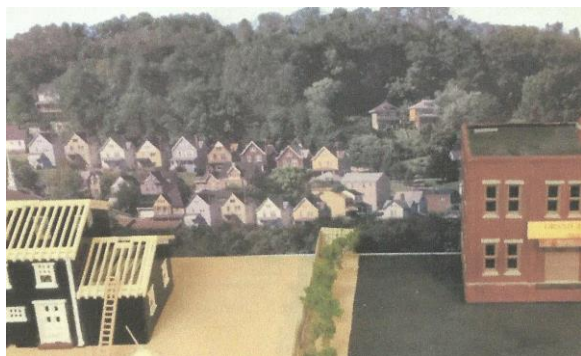


Cloud and Airplane

Rich wanted to add birds and airplanes to his backdrop. Birds are relatively easy because they will appear small. A thin streak of black paint will probably do the trick. For an airplane, Rich took a 1/144 scale model of a DC3, cut it in half lengthwise, and fixed it to his backdrop somewhere up in the air. Your choice of model will depend on the era your layout represents. Rich did the same thing with a hot air balloon. Background buildings are relatively easy to add because there are many commercial prints to choose from. Before pasting them onto your backdrop, remove the background sky by cutting along the rooflines and roof detail of your buildings. The sky color probably won't match anyway. Rich uses double-sided tape to fix the buildings to his backdrop. This works well for modeling industrial buildings and row houses. You can blend these together with some foreground trees, bushes and weeds.



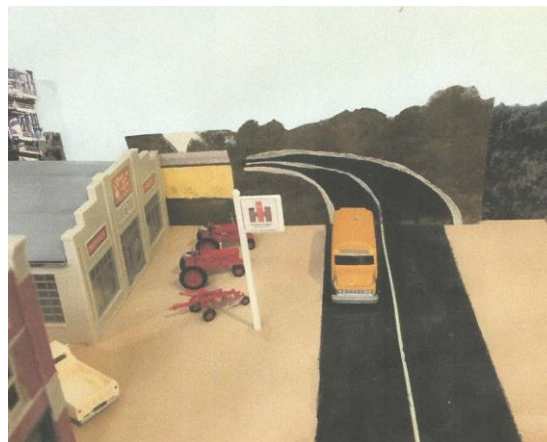
Industrial Background



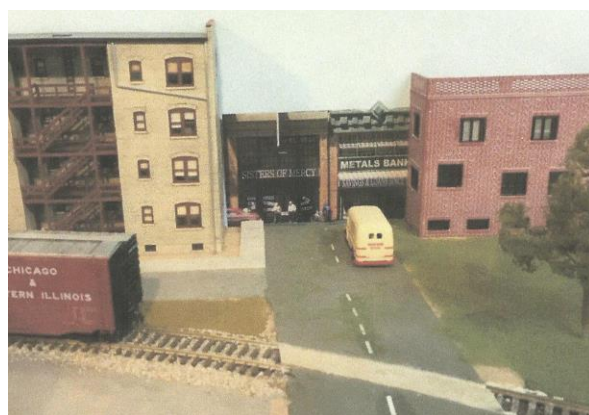
Row houses Background

In addition to printed backdrops you can use models that only protrude from your backdrop by an inch or less. This provides a nice three-dimensional effect. The first photo shows an example. Walthers now makes a number of industrial building background kits. Rich didn't mention what you can do if you can't find exactly the scene you want. If you are handy with a digital camera, photograph an appropriate scene, print it and use as a commercial scene. You may want to Photoshop your images before printing to adjust colors and sizes.

Another tricky technique is to blend a foreground road with a road that is passing into the distance. The junction can be hidden by modeling a dip in the road as it approaches the backdrop. Another technique is a "T" intersection where the foreground road ends at the "T".



Blending a highway into the backdrop



Example of a "T" intersection Backdrop

Rich's parting advice was to "do it while you can still get to it."

GET READY

THE FIRST ANNUAL SUNRISE AUCTION IS COMING

At the AUGUST Sunrise Division meeting we're going to do something different, an auction for members and non-members alike in place of a clinic. Only NMRA members can sell but if you know of someone who might like to buy, you'll be able to bring them along as your guest. The items to sell will be placed on the display tables for review prior to the start of the auction.

Rules will be simple. Minimum opening bid will be \$5 but you can set it higher. Sellers can also provide a minimum winning bid on an item and if that is not reached, the item can be withdrawn. Payment will be by cash or check at the auction unless the buyer makes other arrangements with the seller before bidding starts. Seller must guarantee that an item is operable if applicable. A member can only enter two items for bidding unless previous arrangements have been made with the auctioneer. But you can create a "package" such as 3 vehicles or 2 structures as one item.

This is intended to be a fun summer event so I hope you'll get in the spirit of it. You certainly must have some good items sitting on a shelf that somebody else really needs badly. So enter them to see what they may be worth. And for sure, bring a wad of cash or that checkbook to do some lively bidding too. I hope you find this auction to be a great addition to our already terrific Sunrise Division events schedule.

Rich Flammini

Rocky Mountain Train Show Announcement

This show will be held at the Forney Museum on July 30 and 31. Details appear in the flyer below.

Rocky Mountain Train Show

July 30th & 31st 2016
Saturday 10 am - 5 pm, Sunday 10 am - 3 pm

at the
Forney Museum of Transportation
4303 Brighton Blvd. Denver, CO 80216



Over 80 Tables of Trains - All Scales and Gauges
7 Operating Layouts - N thru O Scales
Hands-On Kids Play Layout

Admission includes full access to the Forney Museum, a paradise of trains, autos, bicycles and motorcycles. Go inside the cab of the worlds largest steam locomotive Union Pacific 4005.

Get a preview at www.forneymuseum.org
Admission \$11, Children \$5, Children under 3 Free

Free Parking!

Sponsored by the Rocky Mountain Division of the Train Collectors Association™



www.RockyMountainTrainShow.com
Show Information (303) 297-1113, Seller Information (303) 364-0274

