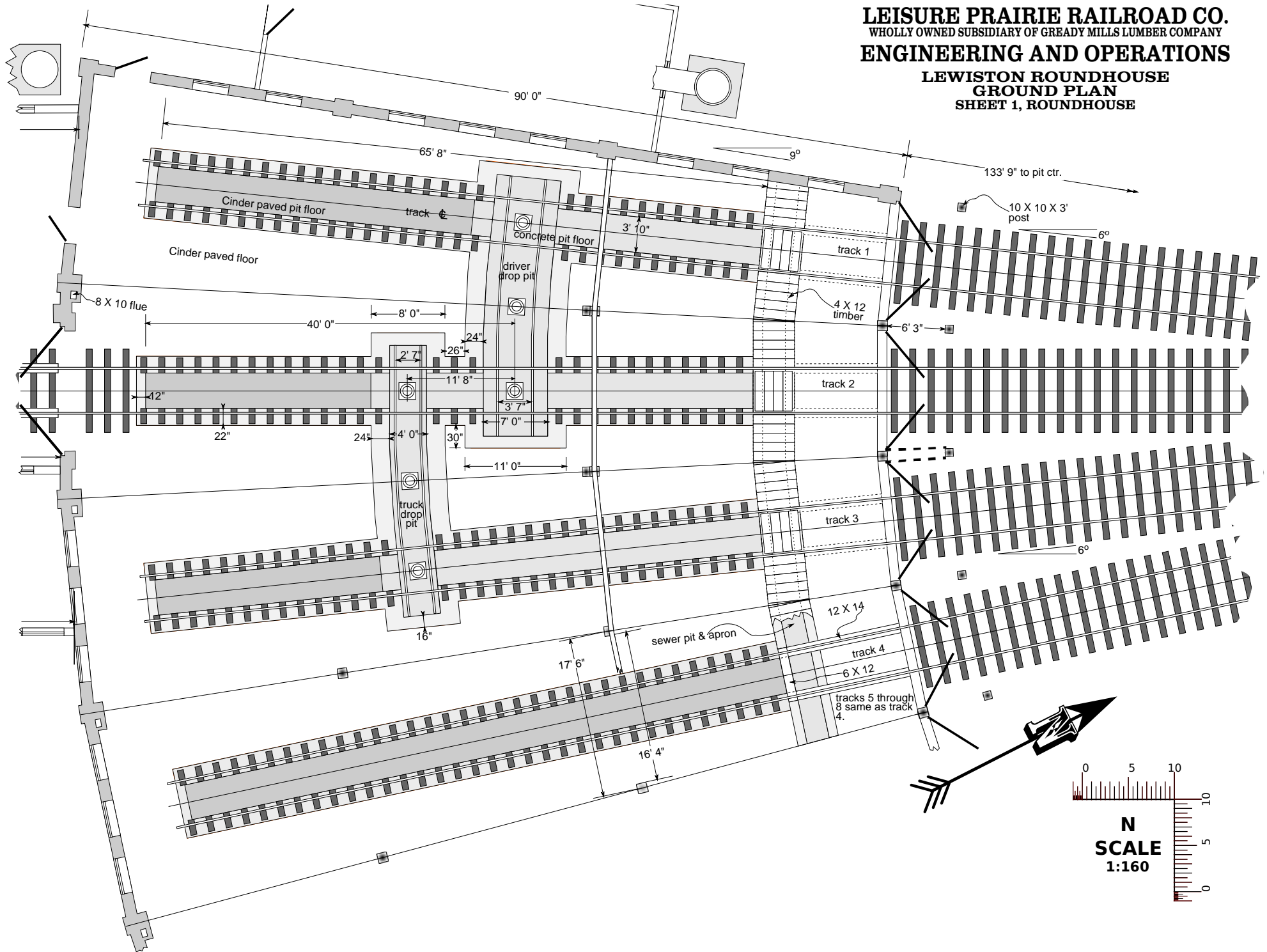
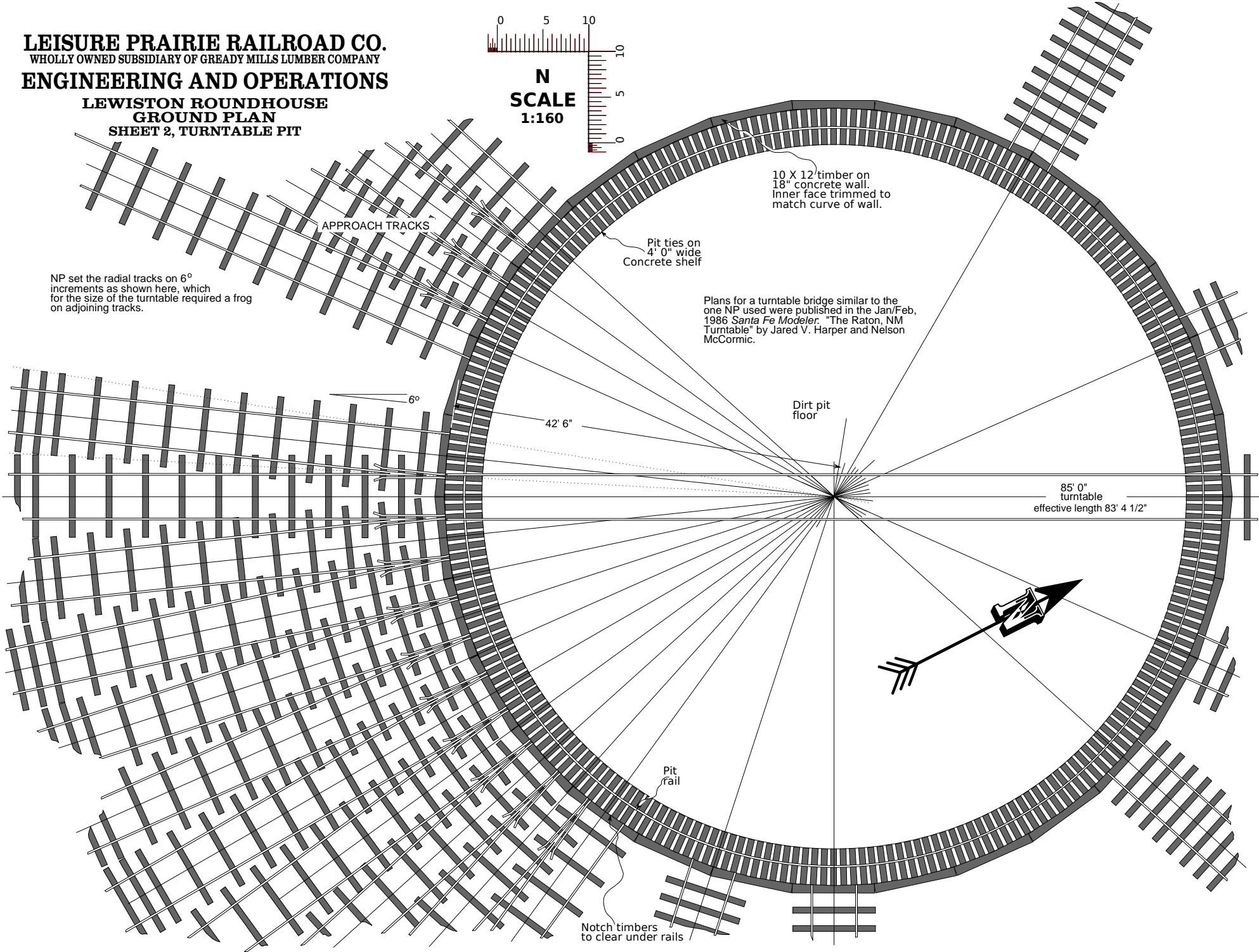
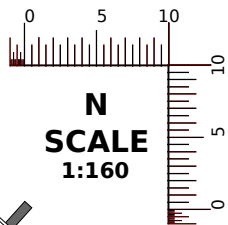


**LEISURE PRAIRIE RAILROAD CO.**  
WHOLLY OWNED SUBSIDIARY OF GREASY MILLS LUMBER COMPANY  
**ENGINEERING AND OPERATIONS**

**LEWISTON ROUNDHOUSE**  
**GROUND PLAN**  
**SHEET 1, ROUNDHOUSE**



**LEISURE PRAIRIE RAILROAD CO.**  
WHOLLY OWNED SUBSIDIARY OF GREASY MILLS LUMBER COMPANY  
**ENGINEERING AND OPERATIONS**  
**LEWISTON ROUNDHOUSE**  
**GROUND PLAN**  
**SHEET 2, TURNTABLE PIT**



NP set the radial tracks on 6° increments as shown here, which for the size of the turntable required a frog on adjoining tracks.

APPROACH TRACKS

10 X 12 timber on 18" concrete wall. Inner face trimmed to match curve of wall.

Pit ties on 4' 0" wide Concrete shelf

Plans for a turntable bridge similar to the one NP used were published in the Jan/Feb, 1986 *Santa Fe Modeler*. "The Raton, NM Turntable" by Jared V. Harper and Nelson McCormic.

Dirt pit floor

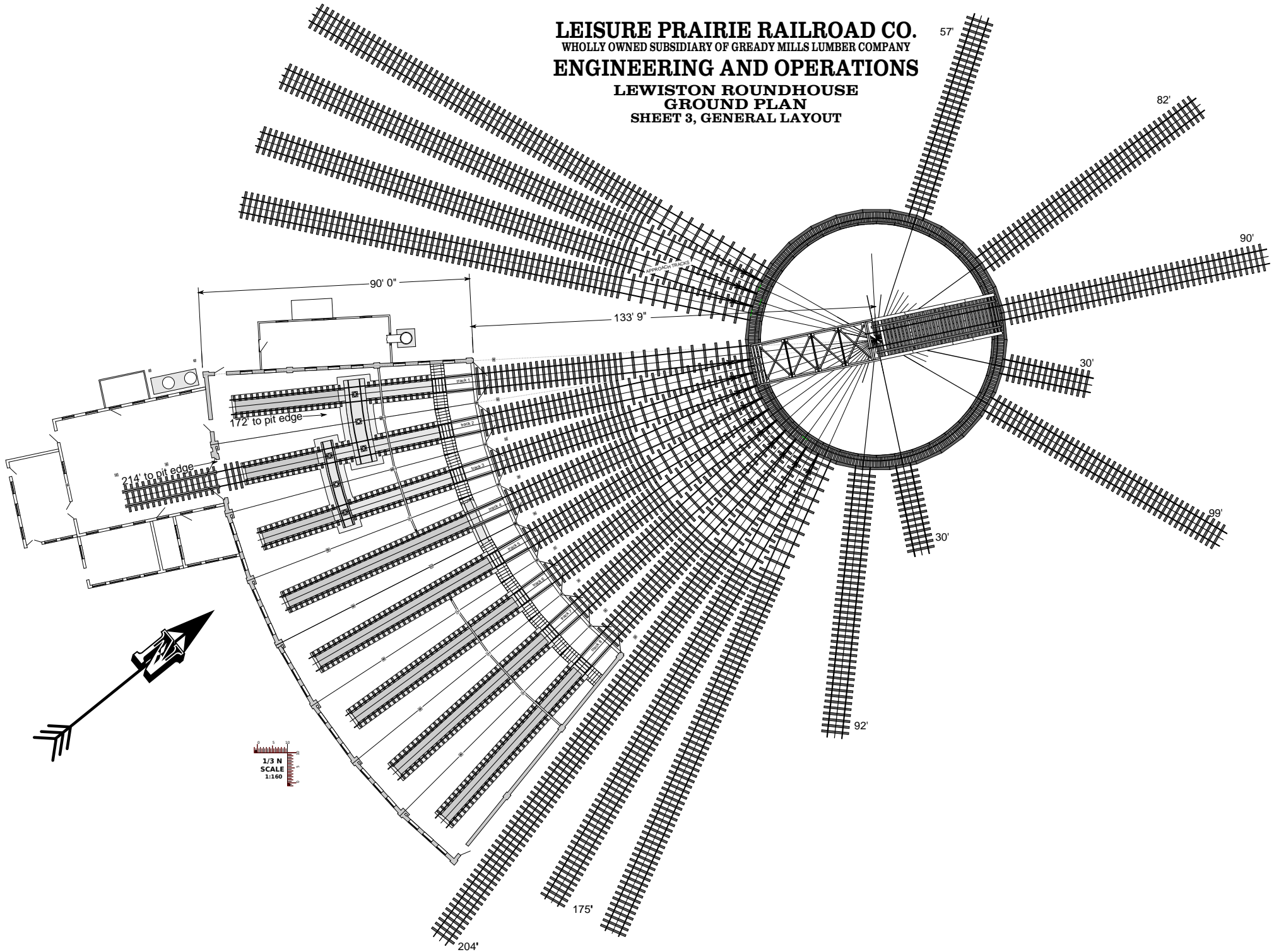
42' 6"

85' 0" turntable effective length 83' 4 1/2"

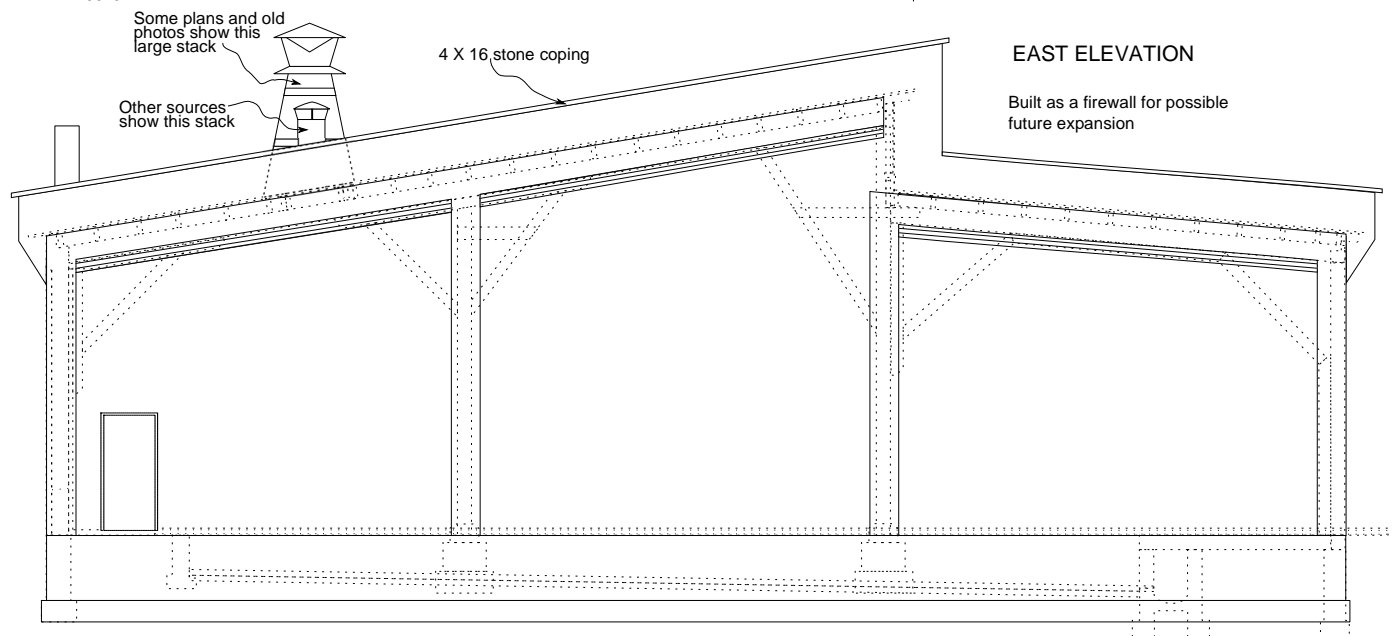
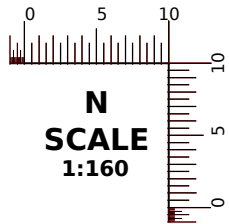
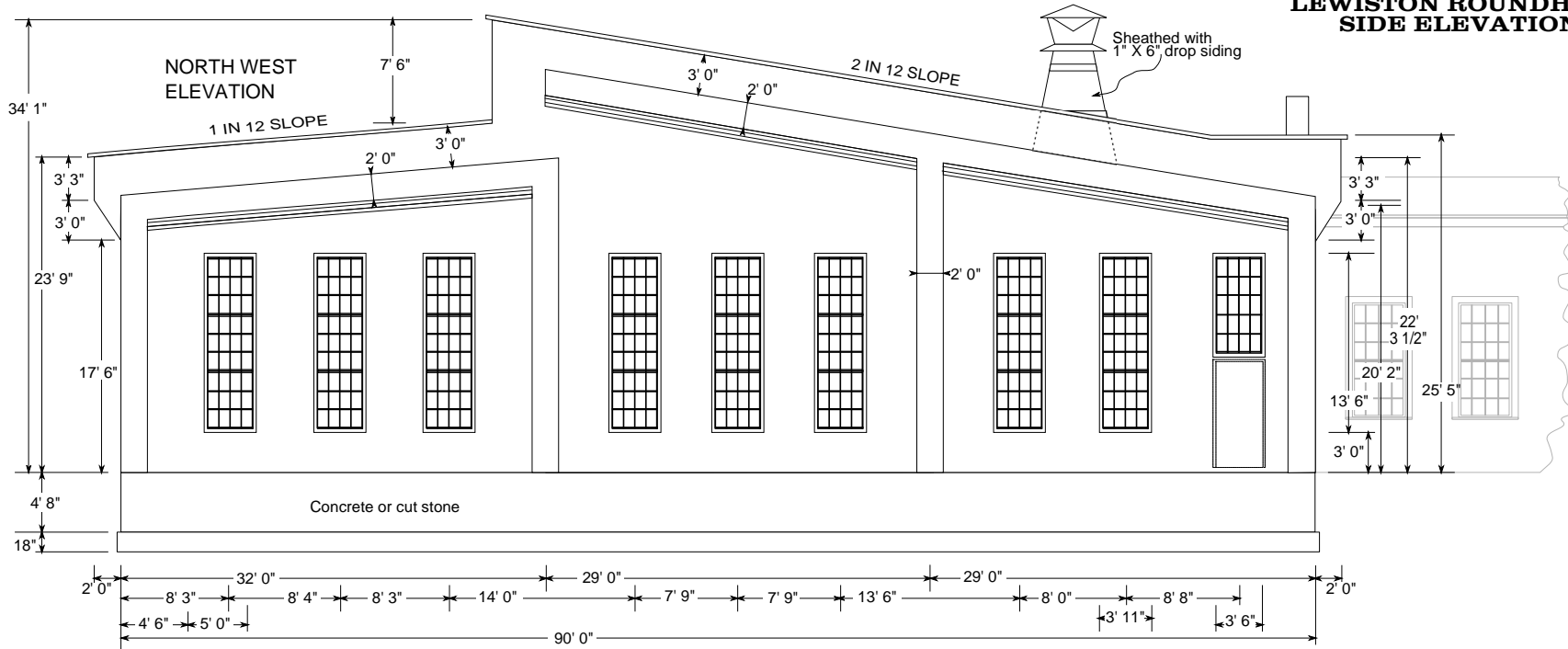
Pit fail

Notch timbers to clear under rails

**LEISURE PRAIRIE RAILROAD CO.**  
WHOLLY OWNED SUBSIDIARY OF GREASY MILLS LUMBER COMPANY  
**ENGINEERING AND OPERATIONS**  
**LEWISTON ROUNDHOUSE**  
**GROUND PLAN**  
**SHEET 3, GENERAL LAYOUT**



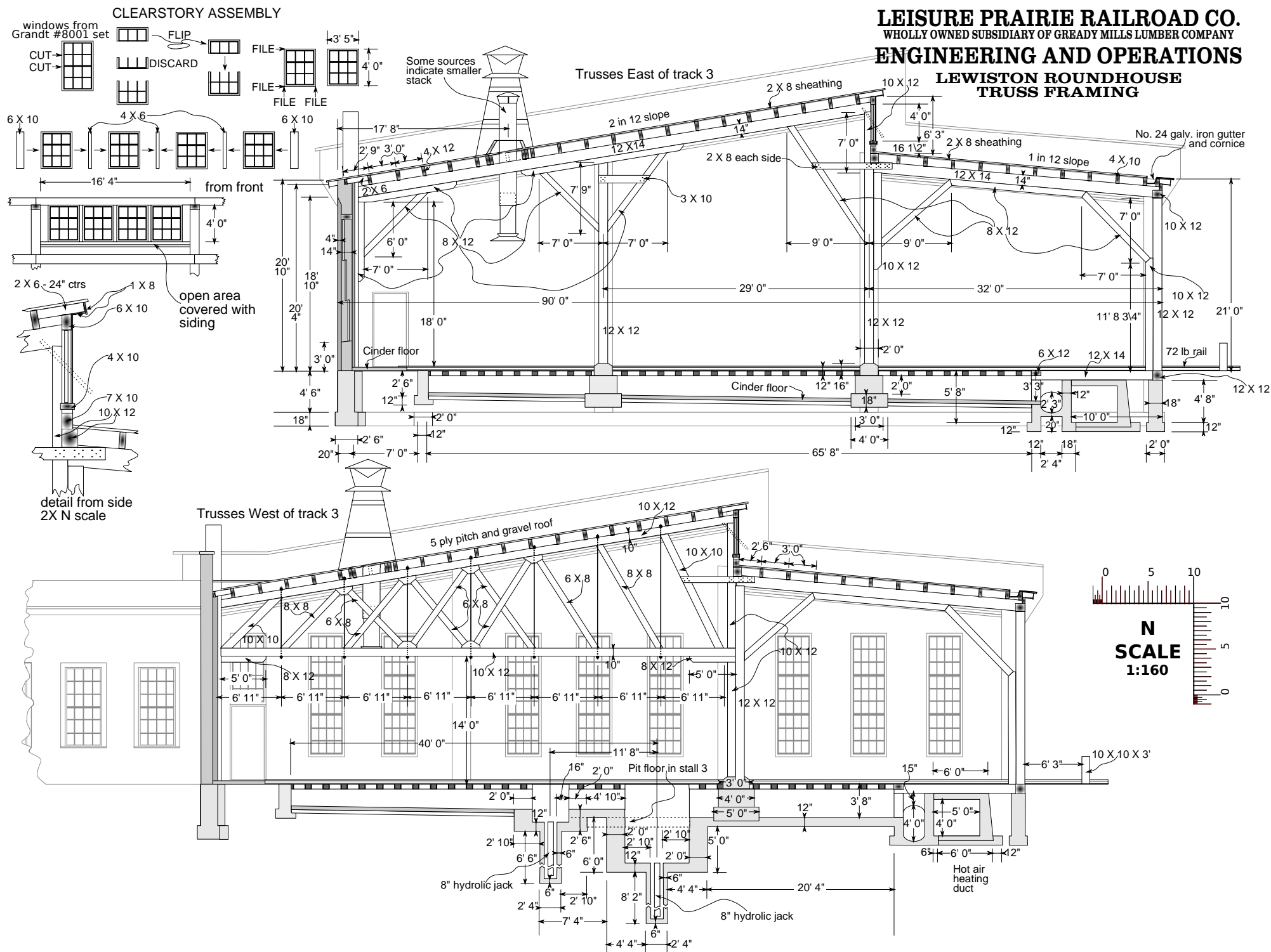
**LEISURE PRAIRIE RAILROAD CO.**  
WHOLLY OWNED SUBSIDIARY OF GREASY MILLS LUMBER COMPANY  
**ENGINEERING AND OPERATIONS**  
**LEWISTON ROUNDHOUSE**  
**SIDE ELEVATIONS**



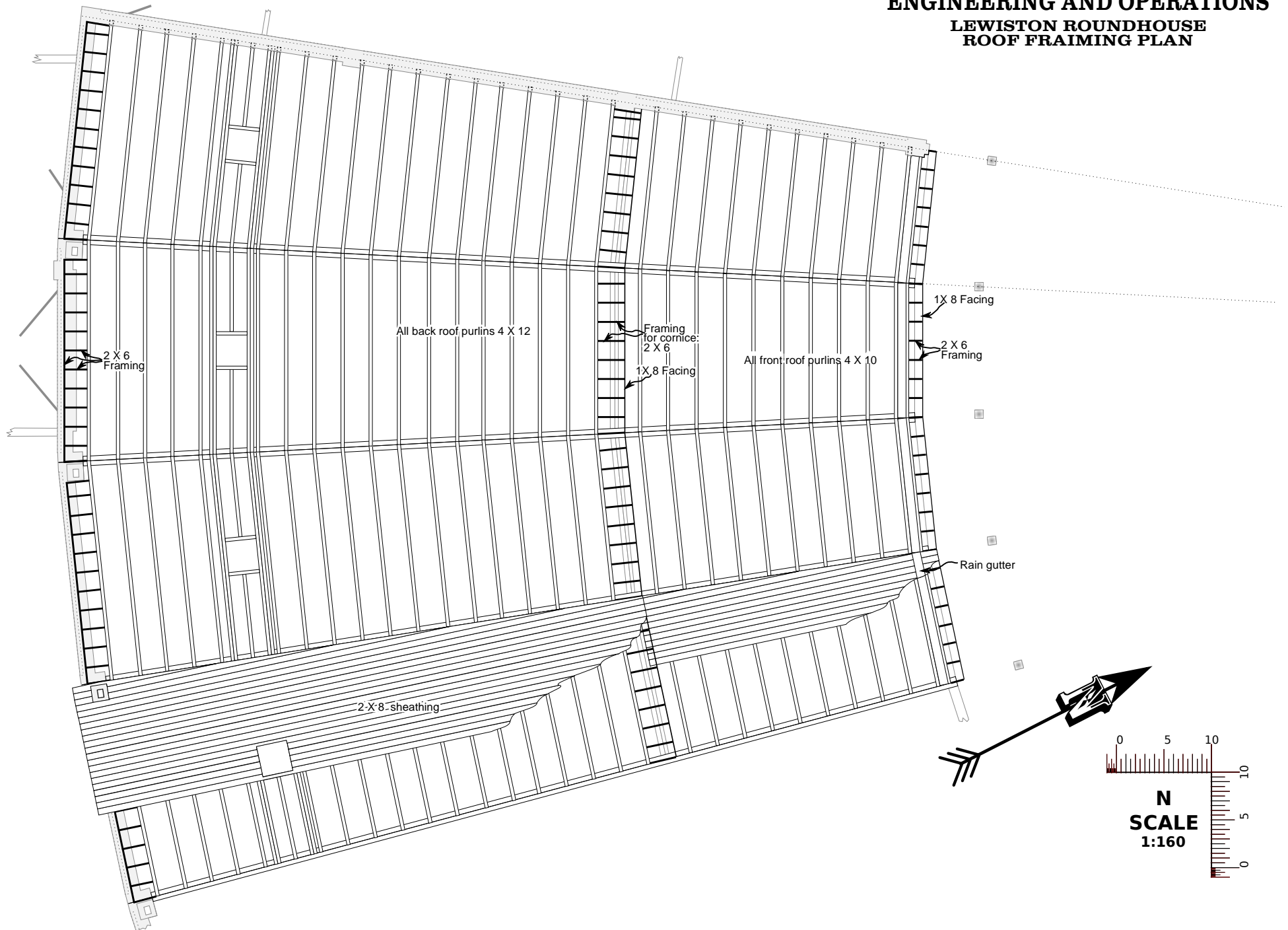


## ENGINEERING AND OPERATIONS

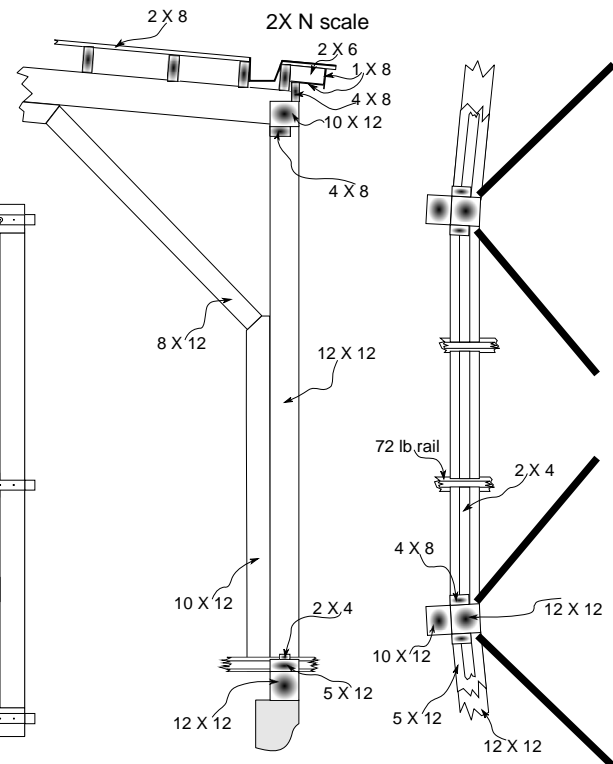
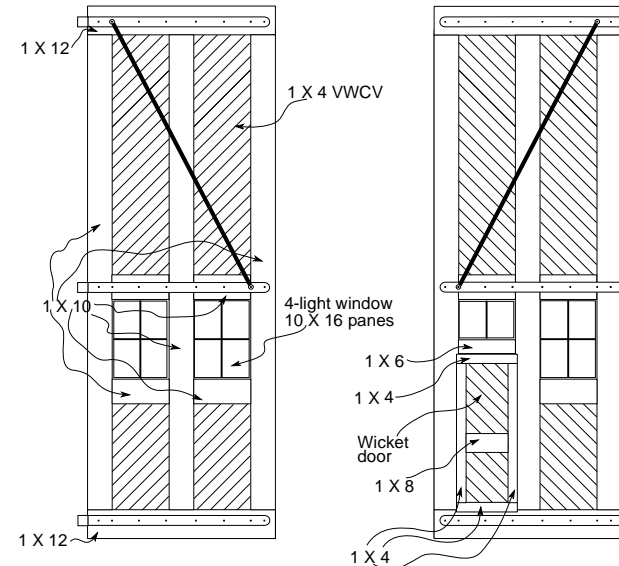
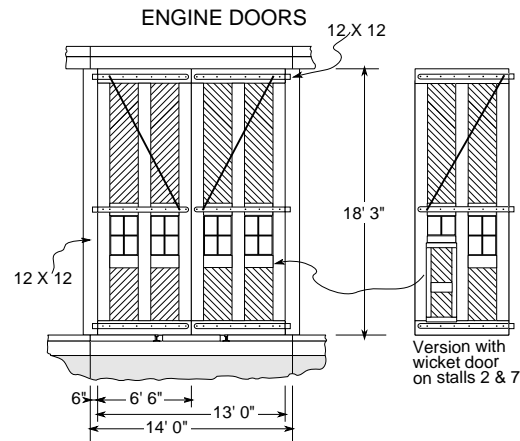
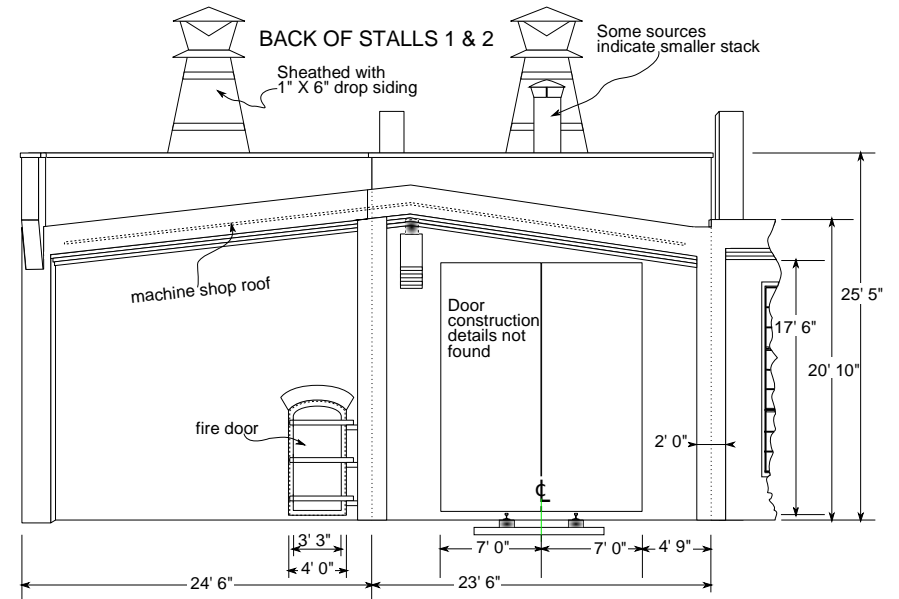
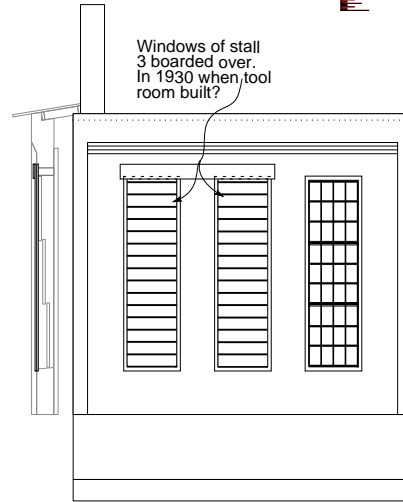
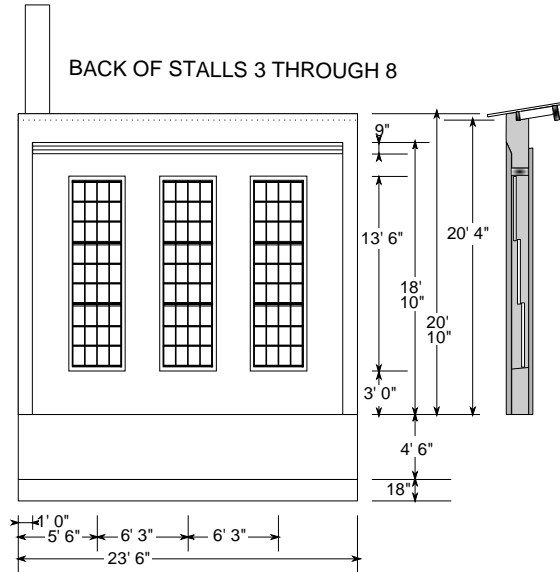
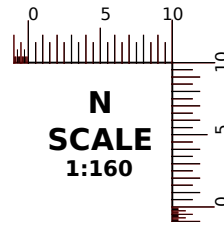
## LEWISTON ROUNDHOUSE TRUSS FRAMING



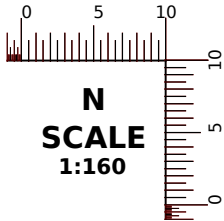
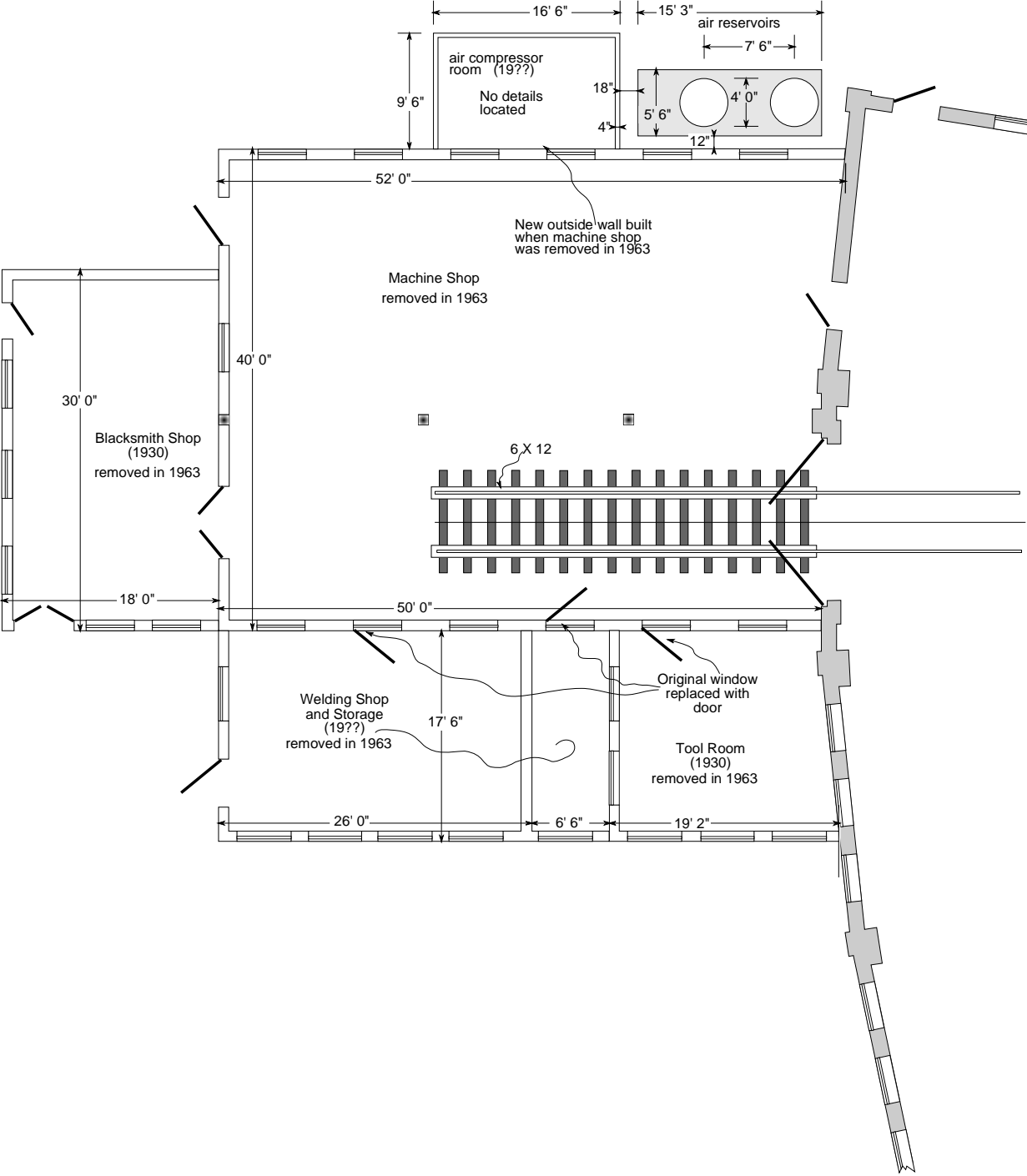
**LEISURE PRAIRIE RAILROAD CO.**  
WHOLLY OWNED SUBSIDIARY OF GREASY MILLS LUMBER COMPANY  
**ENGINEERING AND OPERATIONS**  
**LEWISTON ROUNDHOUSE**  
**ROOF FRAMING PLAN**



**LEISURE PRAIRIE RAILROAD CO.**  
WHOLLY OWNED SUBSIDIARY OF GREASY MILLS LUMBER COMPANY  
**ENGINEERING AND OPERATIONS**  
**LEWISTON ROUNDHOUSE**  
**FRONT AND BACK ELEVATIONS**

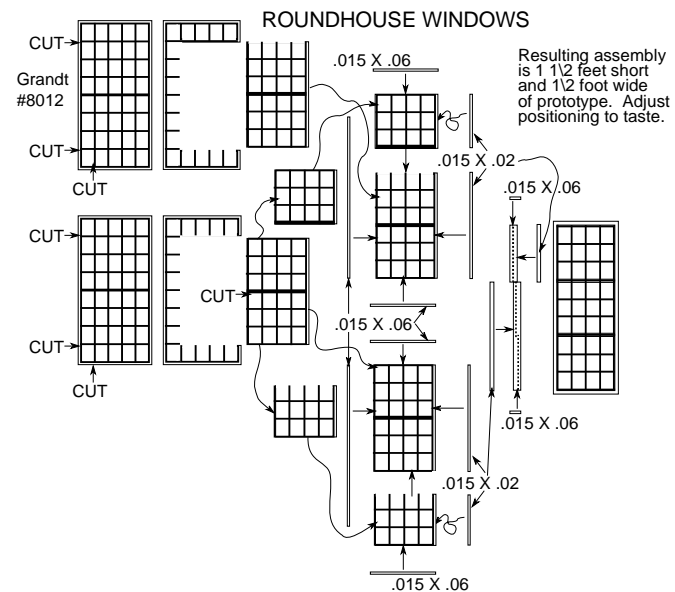
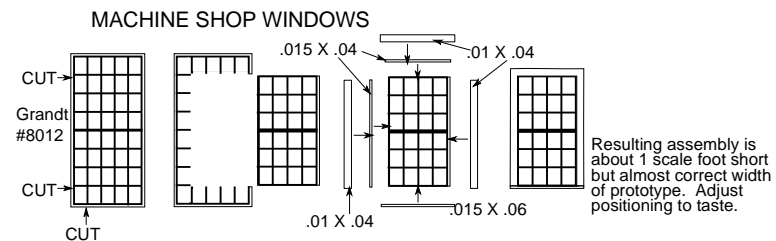
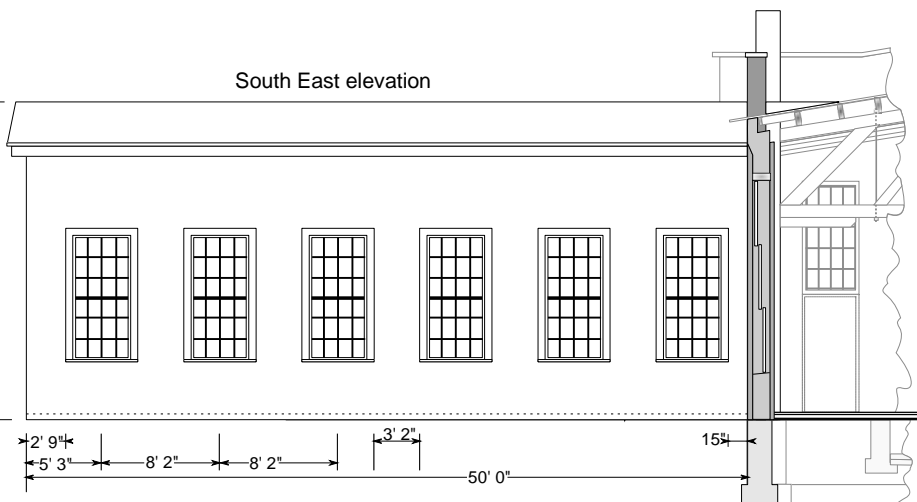
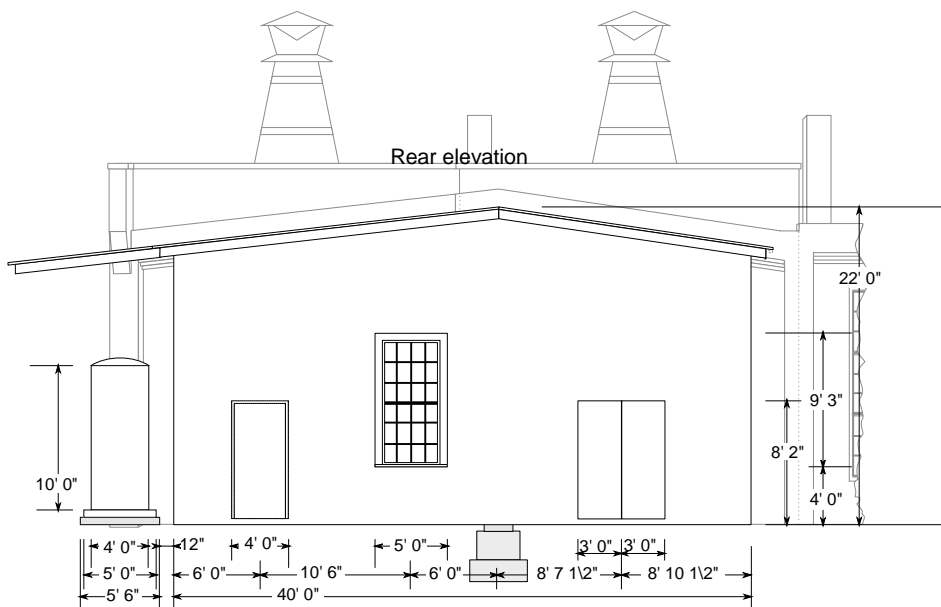
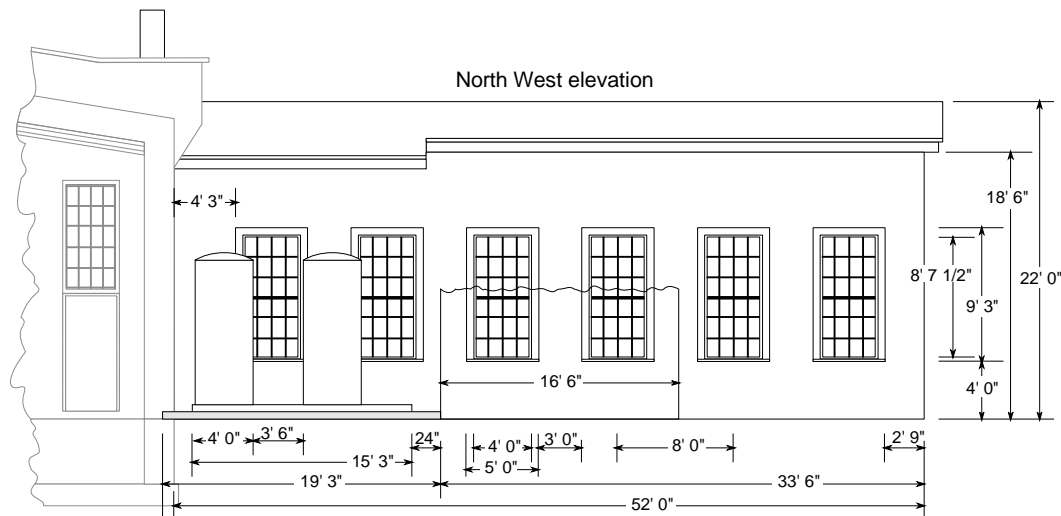
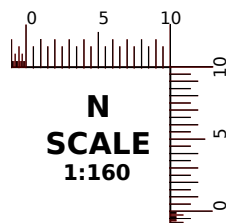


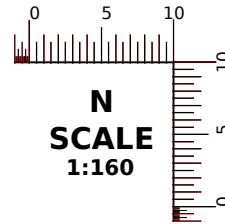
**LEISURE PRAIRIE RAILROAD CO.**  
WHOLLY OWNED SUBSIDIARY OF GREASY MILLS LUMBER COMPANY  
**ENGINEERING AND OPERATIONS**  
**LEWISTON ROUNDHOUSE**  
**MACHINE SHOP**  
**SHEET 1, GROUND PLAN**



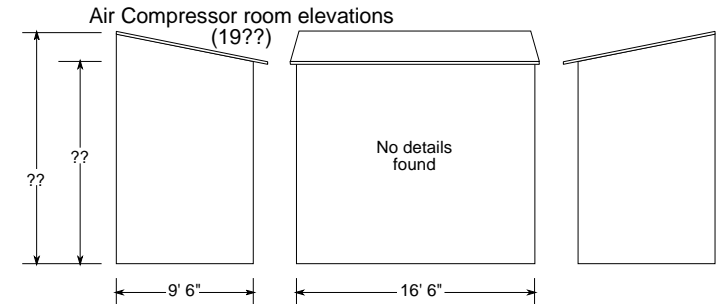
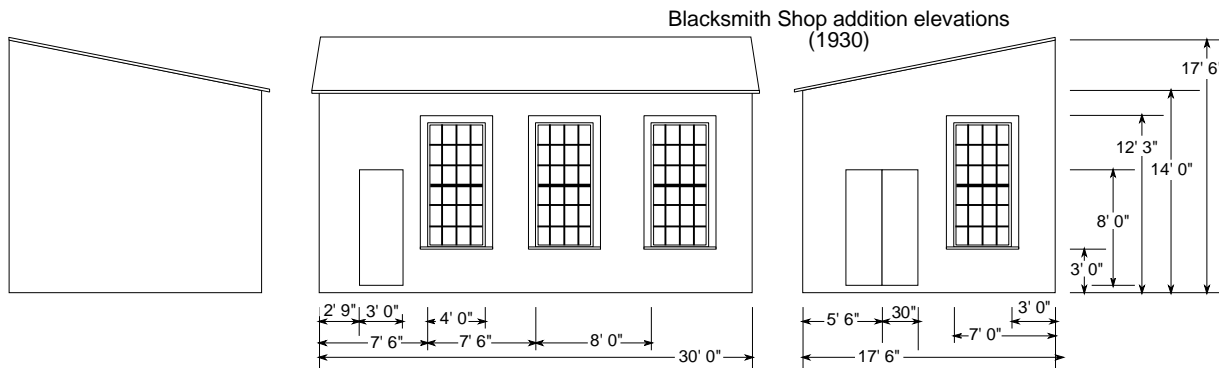
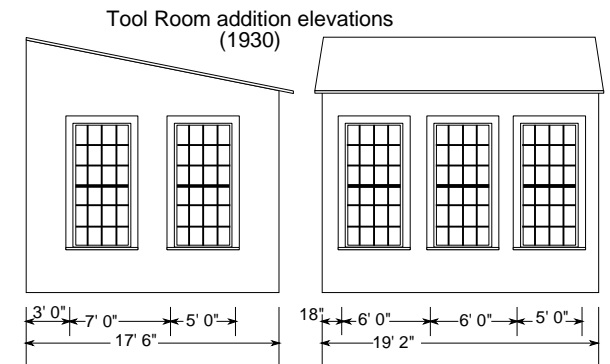
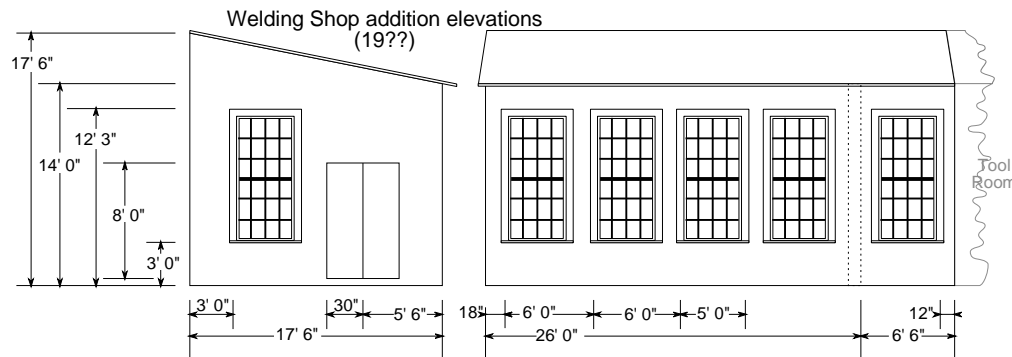
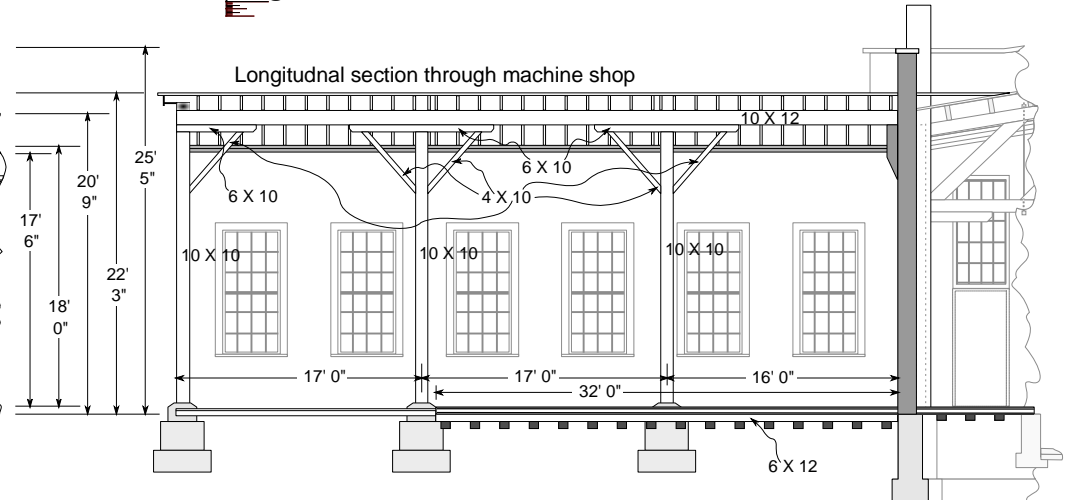
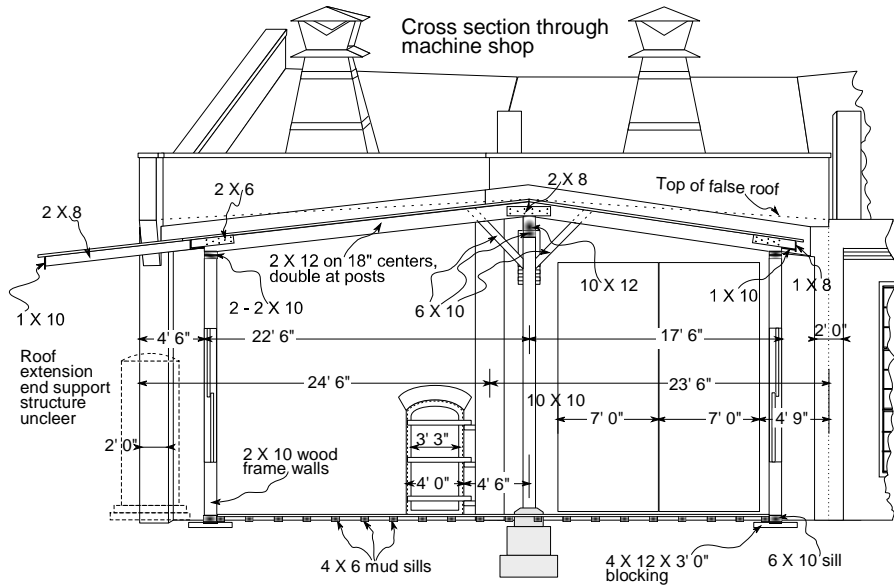


**LEISURE PRAIRIE RAILROAD CO.**  
 WHOLLY OWNED SUBSIDIARY OF GREASY MILLS LUMBER COMPANY  
**ENGINEERING AND OPERATIONS**  
**LEWISTON ROUNDHOUSE**  
**MACHINE SHOP**  
**SHEET 2**





**LEISURE PRAIRIE RAILROAD CO.**  
WHOLLY OWNED SUBSIDIARY OF GREASY MILLS LUMBER COMPANY  
**ENGINEERING AND OPERATIONS**  
**LEWISTON ROUNDHOUSE**  
**MACHINE SHOP**  
**SHEET 3**



# LEISURE PRAIRIE RAILROAD CO.

WHOLLY OWNED SUBSIDIARY OF GREASY MILLS LUMBER COMPANY

## ENGINEERING AND OPERATIONS

### LEWISTON ROUNDHOUSE LEAN-TO SHED

PREFABRICATED STEEL BY  
TRUSOUN STEEL CO.

Originally designed as heating plant boiler  
house; later converted to steam cleaning room  
(right), and electrical shop (left).

