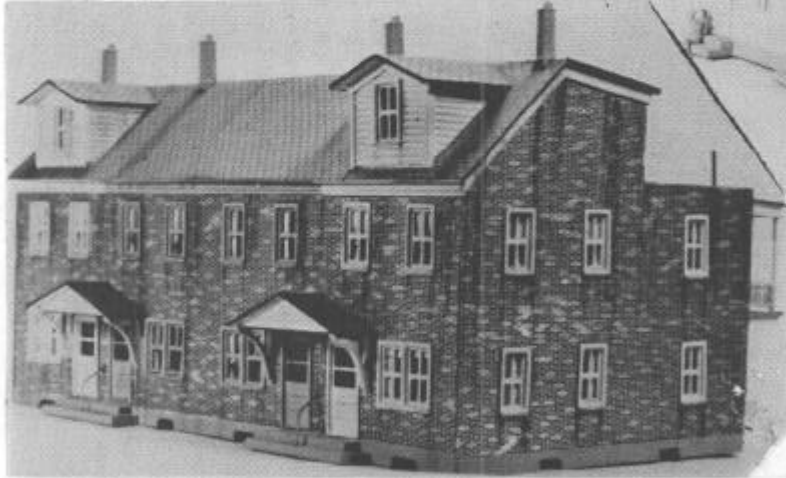
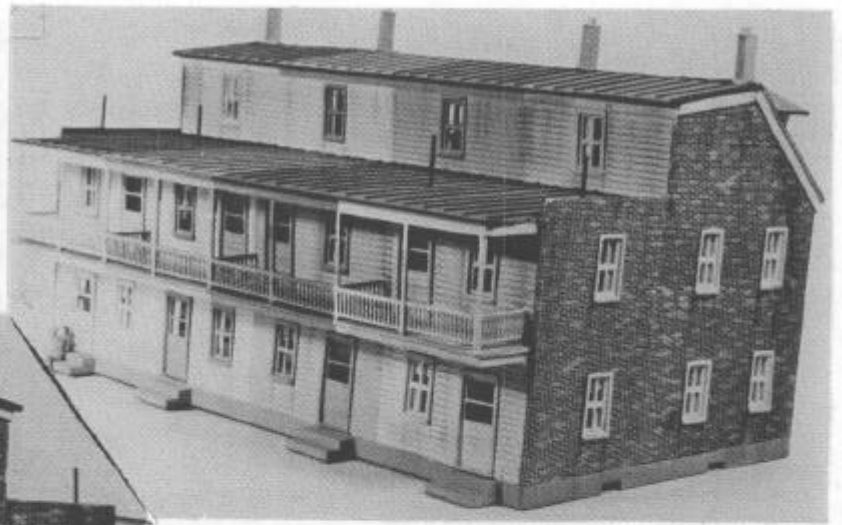


LVM24 - ROW HOUSES - Now, only \$ has a kit to build row houses similar to those found in towns and cities in the Northeast and other sections of the U.S. Kit includes 12 door, 42 window, 4 canopy supports, 4 chimney castings, and 9 Grandt Line posts and 8 railing castings. All wood and cardstock parts are cut to size wher-



ever possible. Brick and shingles are supplied by Model Hobbies.

Possibilities are numerous. Two units together for a longer row. A bay added to end home, or a barber shop or hair dresser with a sign. A row of garages, back yards added, or windows arranged to suit needs. 11" x 7" area required.

LVM25 - 8,000 GALLON TANK CAR - Kit complete with American Models trucks, Kadee couplers, and decals. The PVC tank is covered with a heavy paper wrap with rivet impressions so that a car without rivets can also be made. All wood parts precut. Tank supports, ends, domes, brake wheel, and brake cylinder are cast for easy assembly. Step by step instructions contain many drawings to aid in construction. There are 7 different decal and lettering sets to choose from for one, two or three dome cars.



- TEXACO - Silver tank, large black letters, single dome
- CITIES SERVICE - Green or black tank, white letters, single dome
- DEEP ROCK - Black tank, yellow letters, single, double, or triple domes
- UTLX - Black tank, yellow lettering, single, double or triple dome
- MOBILGAS - Red tank, large white letters, single dome
- IMPERIAL OIL - Black tank, white letters with white sections lettered in black.
- DOMINION SUGAR - White tank with black patch red letters. Single dome
- CONOCO - Red tank, white letters. Single dome.

If you use Hi-Rail, we now furnish this kit with American Models Hi-Rail trucks with A.F. compatible couplers for the same price.