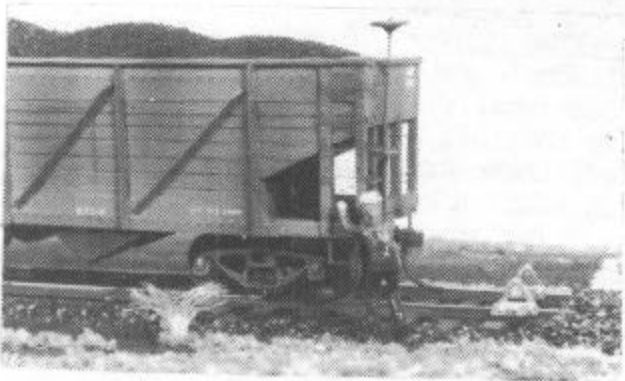


LVMI2 - ENGINE HOUSE - We have brought back a bigger, better, loco house. This 21 1/2" long cinder block and concrete building can be a diesel house, a locomotive works (see photo below), a car repair facility, or even a factory, depending upon your desires. It is 10" wide, has 5 1/2" track centers (for use with AF) and stands 8 5/8" high. The four door openings measure 4 1/4" high by 3" wide. There is a 17" long work platform inside between the two tracks with steps on each end.

It is constructed of Northeast precut wood, cardstock, printed cinder block, and printed transparent windows.



LVMI3 - CAST CAR STOPS - Just like the real thing to prevent those wheels from rolling off the end of your sidings. Detailed metal castings which simply glue to code 100 or 125 rail.