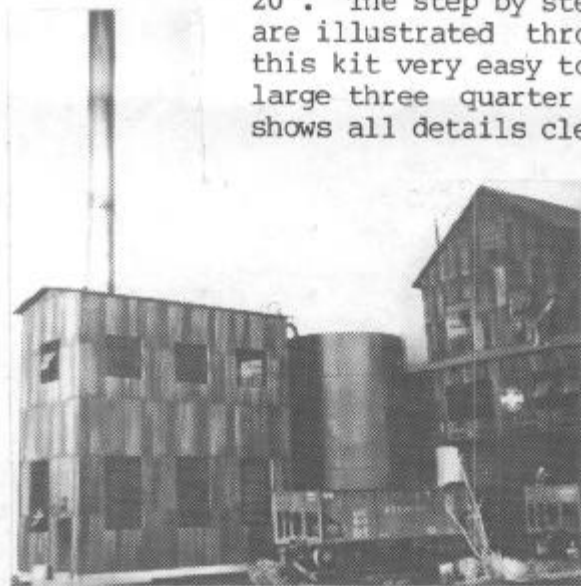
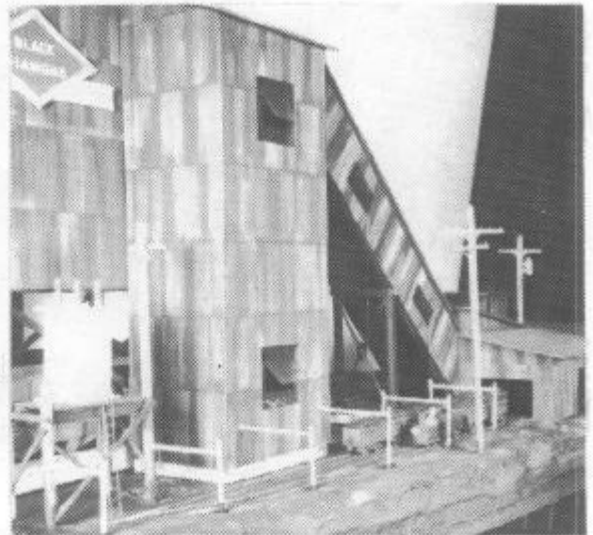


LVMI4 - COAL BREAKER - The first of three kits which build a complete coal mining facility but this is all you really need to represent your mine. It consists of a hardboard floor, N.E. corrugated siding, printed windows, predrilled foundations, and heavy card roofs all precut to make assembly easy. Choice of five mine names. Model uses 10" x 12" area and fits two loading tracks on 3" centers. Resourceful modelers can make this mine operable to load their hopper cars. This kit needs LVM00 Stairway Jig if you do not already have one.

LVMI5 - MINEHEAD - For those who want a complete model, this is the super detail kit. It is the entrance to a slope mine where coal is brought to the surface. A covered conveyor and tower join this unit to the LVMI4 breaker. Dummy coal cars, track, electric locomotive, overhead wire supports a large transformer, and utility poles make this model extremely realistic. It covers an area 6" x 20". The step by step instructions are illustrated throughout making this kit very easy to assemble. A large three quarter view drawing shows all details clearly.



LVMI6 - POWERHOUSE - This tall building with its towering steel guyed stack and connecting water tank really completes the mining facility. Its purpose is to make electricity to run pumps, the mine locos, and all the machinery. It takes an area 3 1/2" x 13" and could be used as a factory powerhouse. All three mine kits together assembled as shown below occupy an area 15" x 40".

